



City of Minneapolis – New Public Service Building

Subcontractor Information Session

June 7, 2018

Project Team



OWNER



ARCHITECT



CONSTRUCTION MGR



**STRUCTURAL &
MECHANICAL**



**CIVIL
ENGINEER**



LANDSCAPE ENGINEER



Construction Team



Darin Knapp
Vice President



Lynn Littlejohn
Vice President



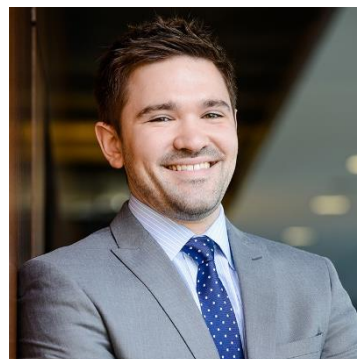
Dave Foley
Construction Executive



Rich Bistodeau
Senior Superintendent



Brad Hjemvick
Project Manager



Robb Altendorf
Project Manager

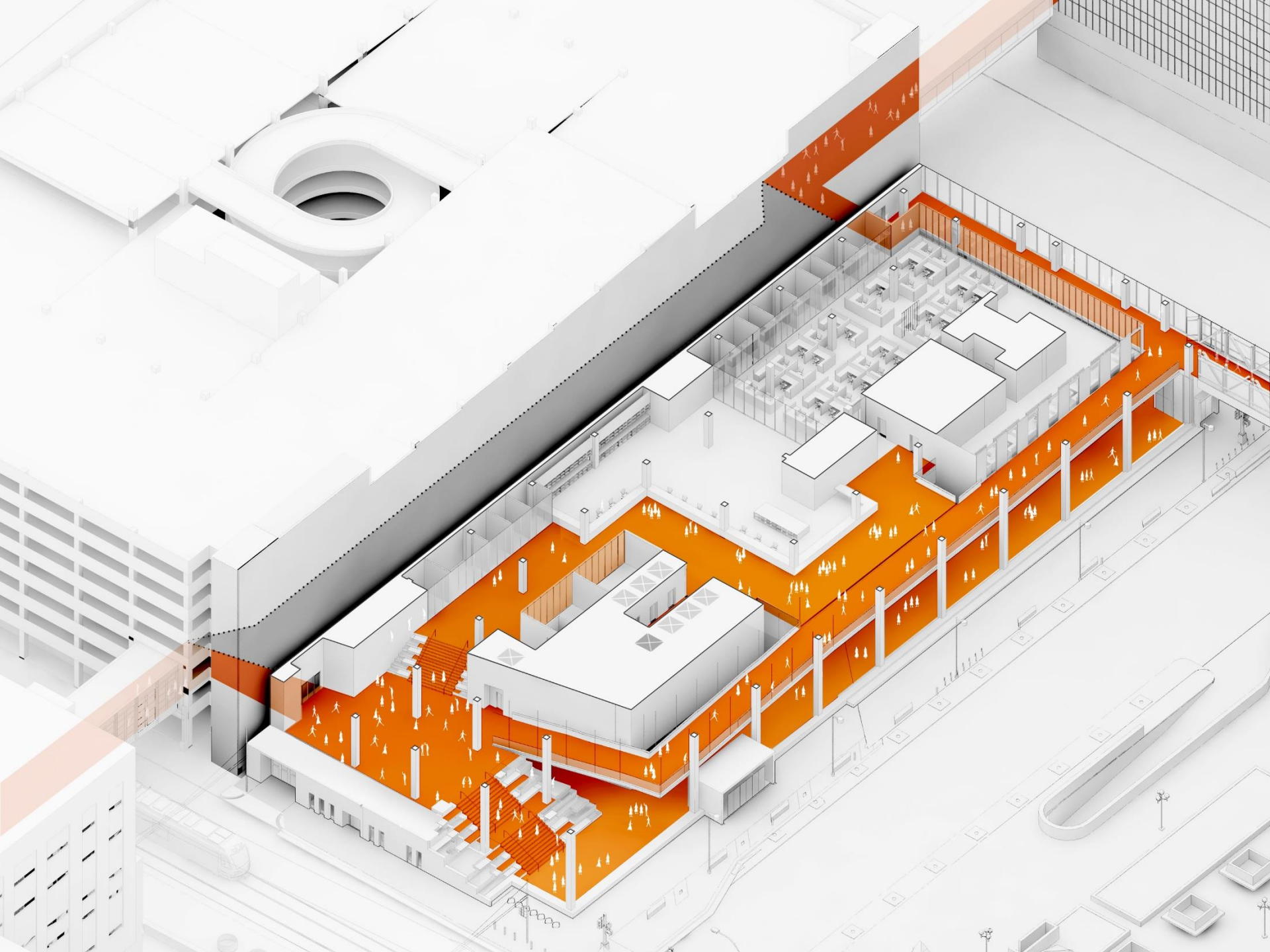


Trina Bolton
Community Affairs Manager









Milestone Schedule

- Parking Ramp Demolition June 2018
- Mass Excavation and Caissons September 2018
- Concrete Foundations/Walls December 2018
- Steel Erection April 2019
- Interior Construction June 2019
- Exterior Envelope August 2019
- Substantial Completion August 2020

Procurement Schedule

- BP 1 – Excavation – June 2018
- BP 2 – Structure – August 2018
- BP 3 – Enclosure – October 2018
- BP 4 – Finishes – November 2018

Procurement Schedule

Bid Package #1 – June 2018

- Utilities
- Earth Retention
- Excavation/Backfill
- Deep Foundations

Procurement Schedule

Bid Package #2 – August 2018

- Structural Steel
- Stairs
- Concrete
- Waterproofing
- Traffic Coating

Procurement Schedule

Bid Package #3 – October 2018

- Overhead Doors
- Skylight
- Roofing
- Mechanical
- Electrical
- Elevators
- Landscaping

Procurement Schedule

Bid Package #4 – November 2018

- Masonry
- Misc. Metals
- Carpentry/Casework
- Doors, Frames, Hardware
- Operable Partitions
- Window Shades
- Accessories
- Signage
- Fire Extinguishers
- Access Floor
- Joint Sealants
- Interior Glazing

Procurement Schedule

Bid Package #4 Cont. – Nov 2018

- Railing
- Drywall/Fireproofing
- Tile & Stone
- ACT
- Wood Flooring
- Carpet & Resilient
- Paint

Awarded Contracts

- Exterior Glass Enclosure - Architectural Wall Systems

- Demolition – Carlton Companies

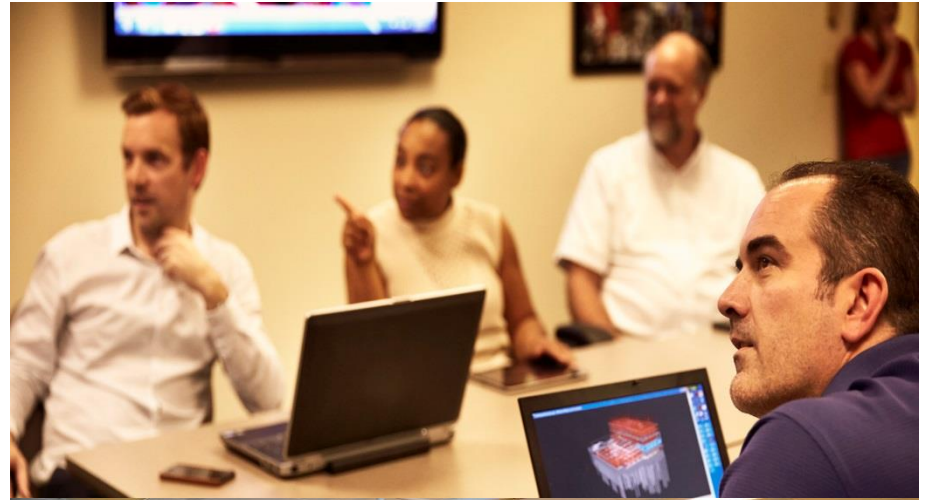
Community Participation

SUBP Goal – 25%

- 13% WBE
- 12% MBE

Recognized Certifications

- DBE
- TGB
- CERT



Community Participation

Workforce Goal

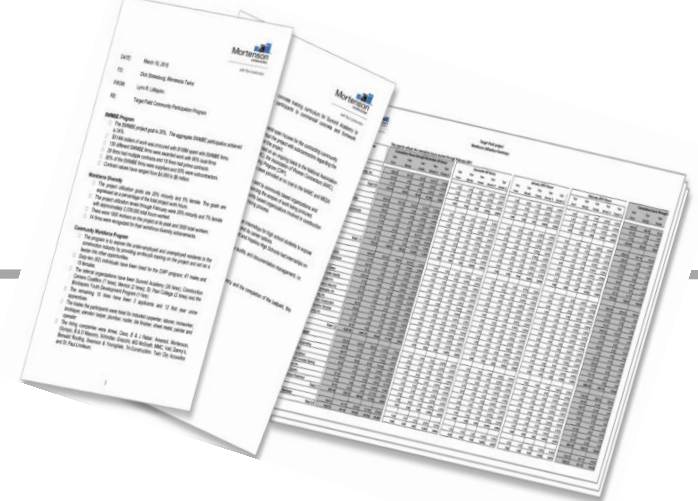
- 32% Minority
- 20% Female



- Percentage of total work hours
- Applies to onsite construction personnel

Reporting

- SUBP
 - SUBP Participation Form required for responsive bid
 - Monthly SUBP firm participation & payments
- Workforce
 - Weekly via LCPTracker
 - Hours
 - Wages
 - Zip codes
 - Gender
 - Ethnicity



Additional Project Requirements

- Safety
- Quality
- Bonding
- PLA
- Prevailing Wage
- VDC



Contact

Robb Altendorf

Project Manager

Robb.altendorf@mortenson.com

763-287-5902

Trina Bolton

Community Affairs Manager

Trina.bolton@mortenson.com

763-287-3732



Q & A