

A Cities United Call to Action

Reimagining Public Safety:

Moving To Safe, Healthy & Hopeful Communities

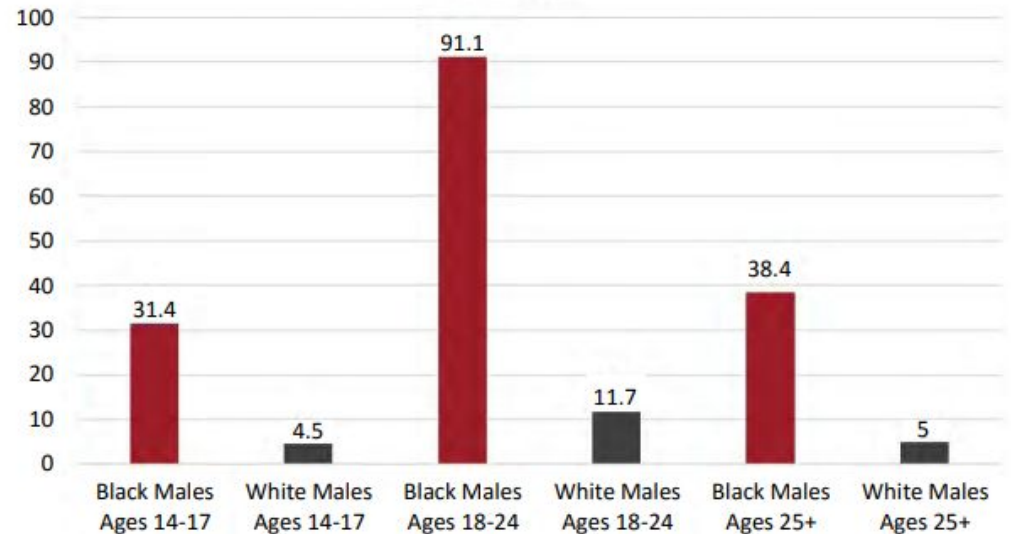
**cities
united**

Cities United is committed
to working with city,
community and young
leaders to **reimagine &
redefine** public safety.

The problem (part I)

Rates of fatal and nonfatal violent victimization are far higher for young Black males living in neighborhoods of high disadvantage.

Homicide Victimization Rate for Males
by Race and Age: 2008 (per 100k)



SOURCE: Cooper and Smith (2011)³

The problem (part II)



According to the Gun Violence Archives (2020), between 2014-2020 there have been approximately

13,935

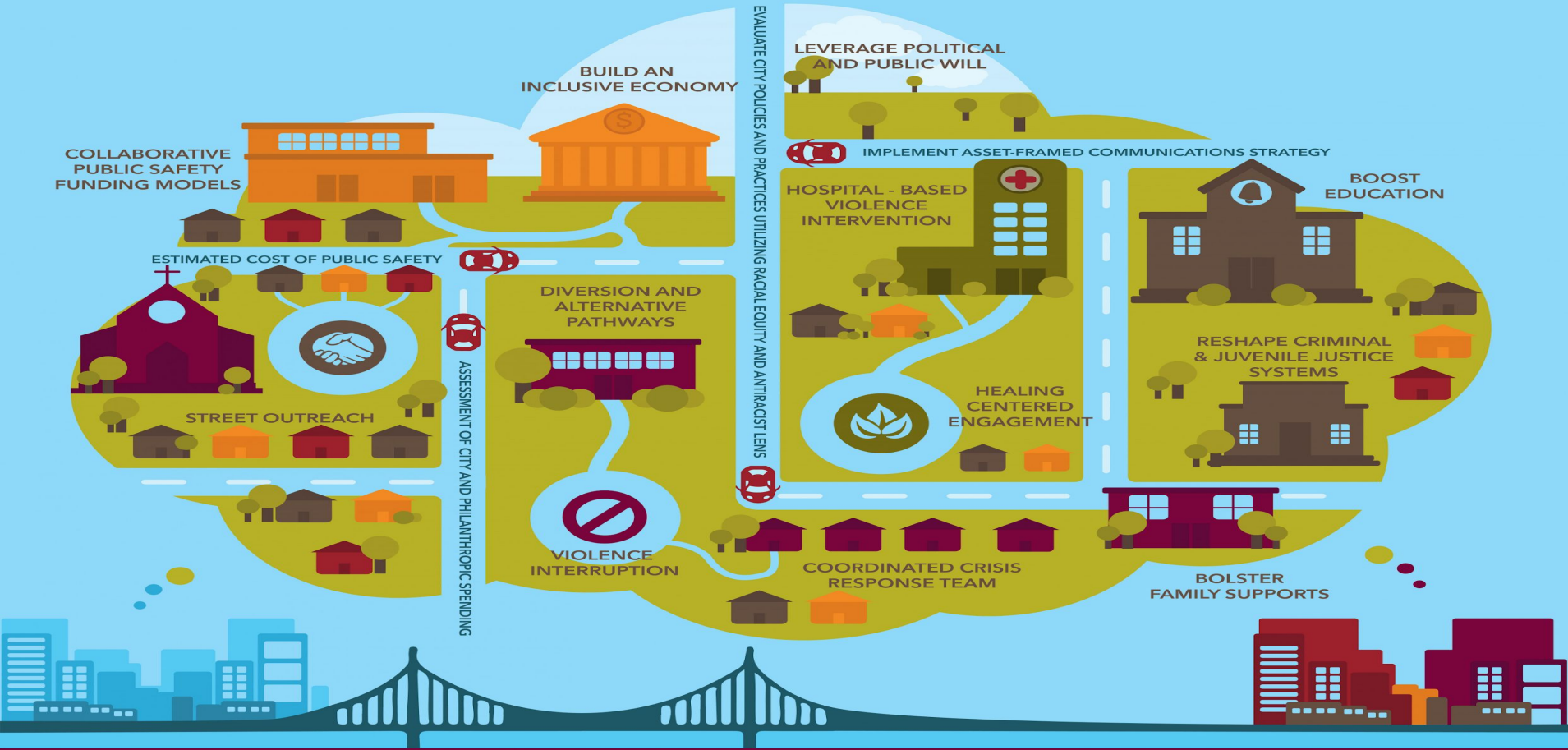
officer involved incidents where the subject-suspect was injured or killed.

A young child with curly hair is sitting at a desk, focused on drawing with a green marker on a piece of paper. There are other papers and a container of pens and pencils nearby. The image is partially obscured by a dark overlay on the left and a red overlay on the right.

The solution

1. **Interrupt** the cycle of community violence.
2. **Dismantle** systems of inequity
3. **Invest** in the sustainability of new administrative and operational activities.

LET'S REIMAGINE PUBLIC SAFETY!



Interrupting the Cycle of Violence

Reimagining public safety means leveraging political and financial capital to invest in solutions supported and led by community members and community-based organizations that represent and work directly with individuals most impacted by community and state violence. These solutions treat violence in the moment or within hours or days of the occurrence.

1

Violence Interruption

2

Street Outreach

3

Hospital-Based Violence
Intervention

4

Diversion & Alternative Pathways

5

Coordinated Crisis Response Team

6

Collaborative Public Safety Funding
Models

Systems of Inequity

Reimagining public safety is also defined as the recognition of historical and current systems of inequity that create conditions that negatively impact the overall quality of life in Black communities.

1

Boost Education

2

Expand Healing Centered
Engagement

3

Build an Inclusive Economy

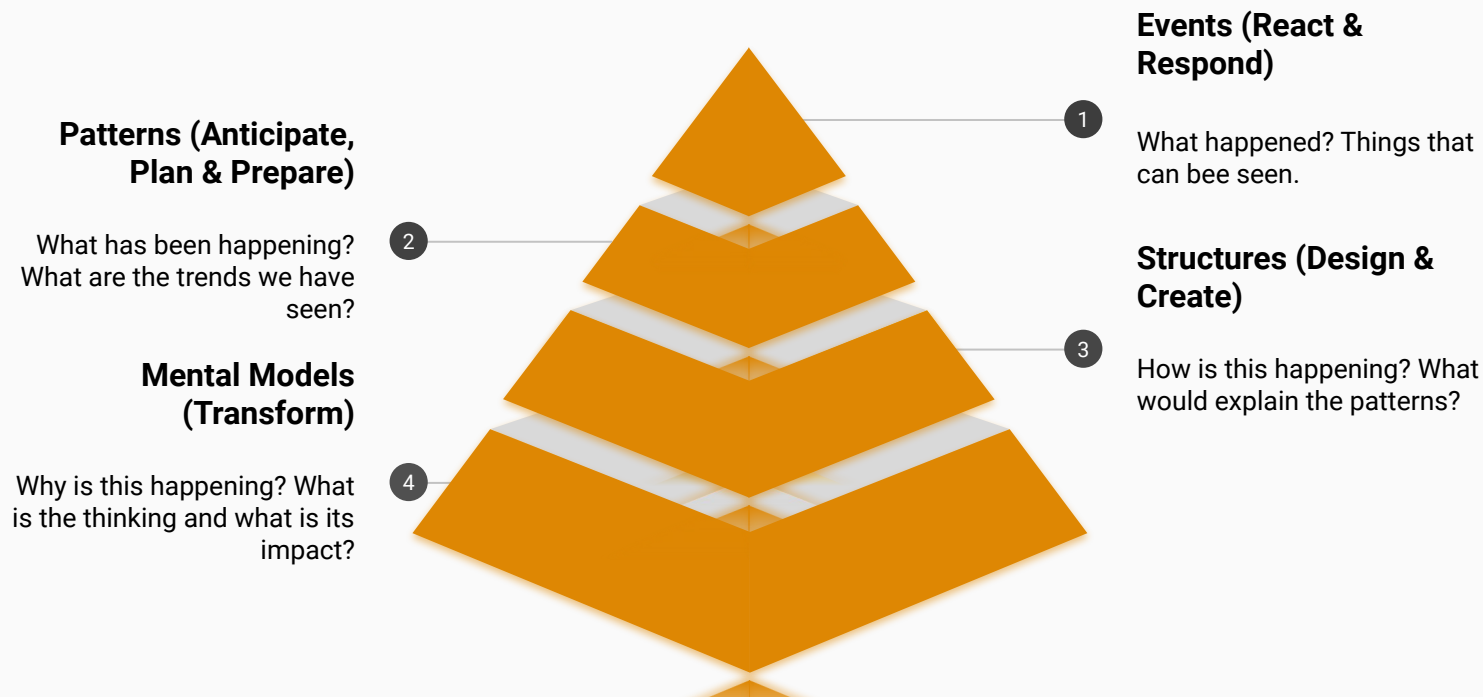
4

Reshape Criminal & Juvenile Justice
Systems

5

Bolster Family Support

Dismantling Systems of Inequity: Goodman's Iceberg Model

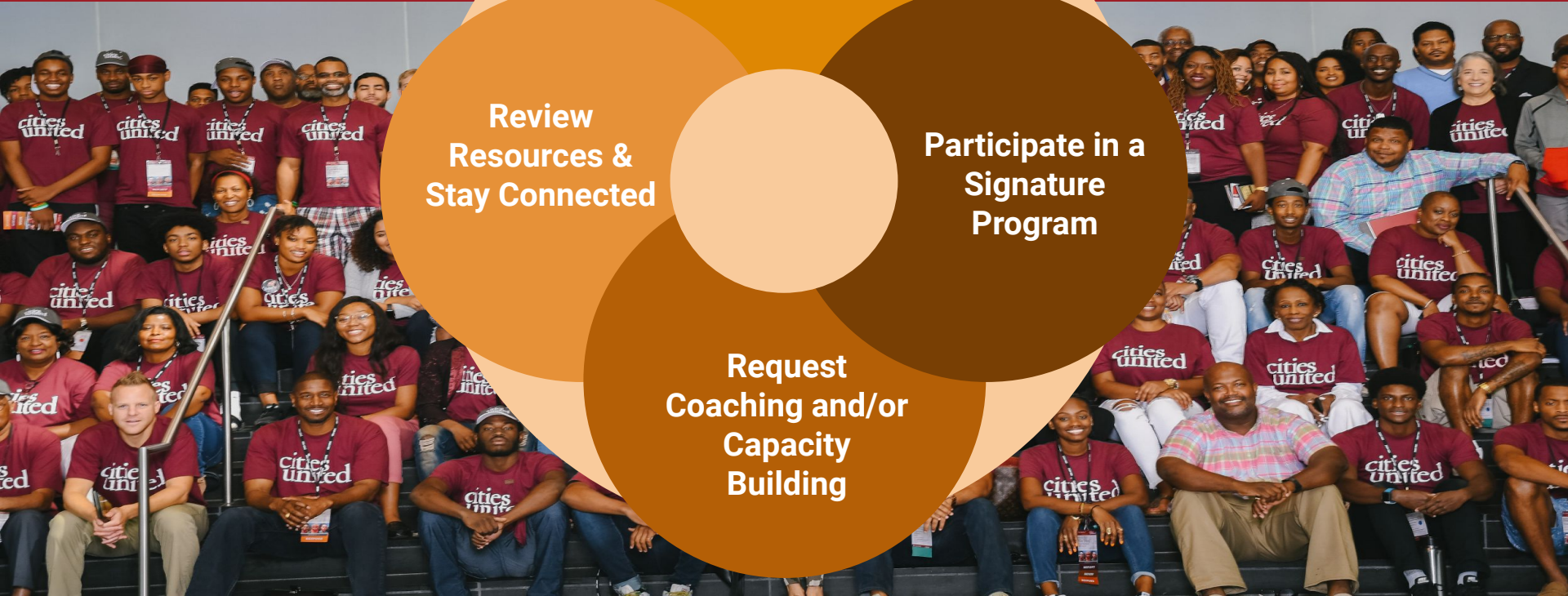


Investing in Sustainability

Reimagining public safety includes investing in action planning, relationship management, information gathering, consistent evaluation and effective communication/messaging platforms.



Call to Action



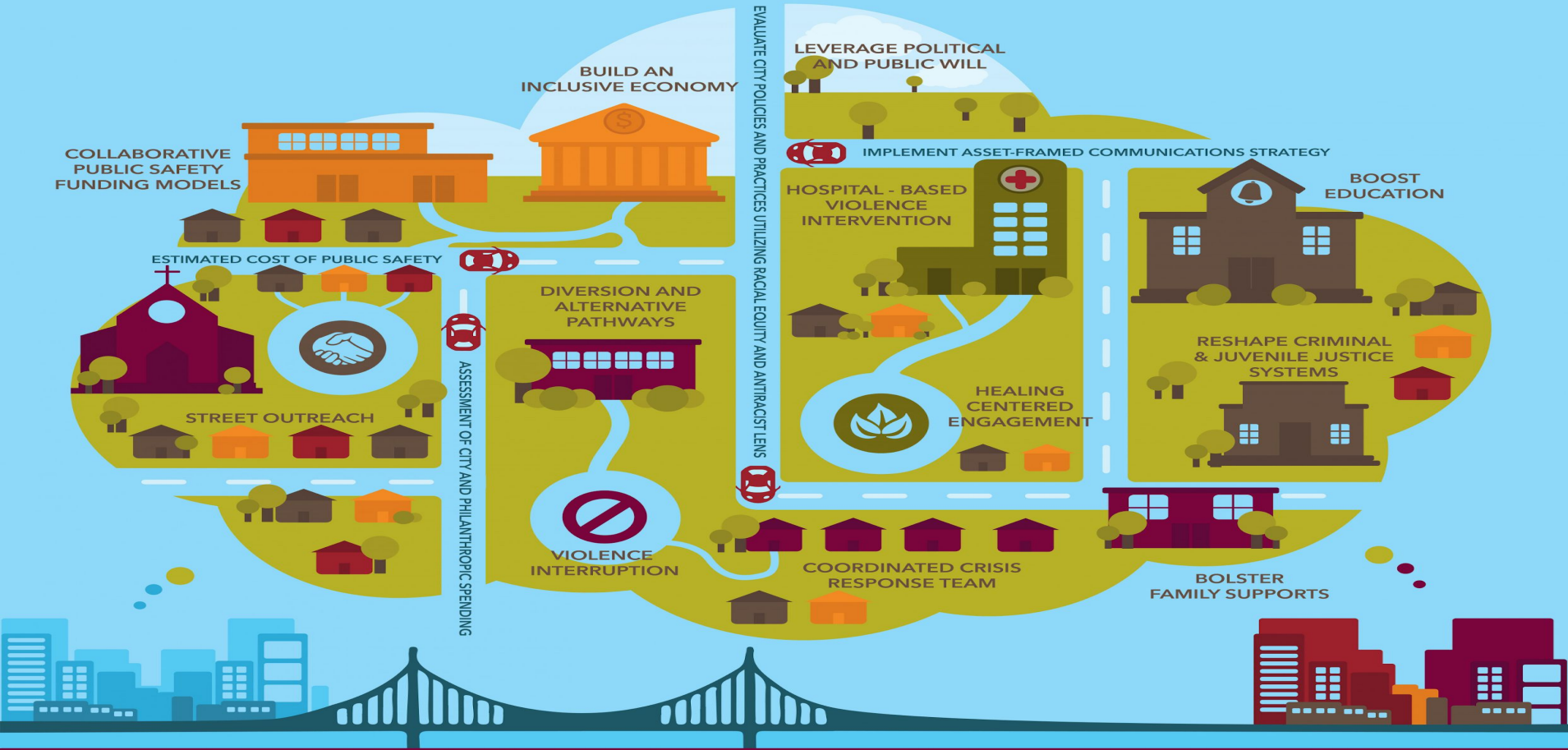
Join the
Network

Review
Resources &
Stay Connected

Participate in a
Signature
Program

Request
Coaching and/or
Capacity
Building

LET'S REIMAGINE PUBLIC SAFETY!





Stay Connected

cities
united

www.citiesunited.org

info@citiesunited.org

@citiesunited