

Logan Park Industrial

Neighborhood Street Reconstruction Project

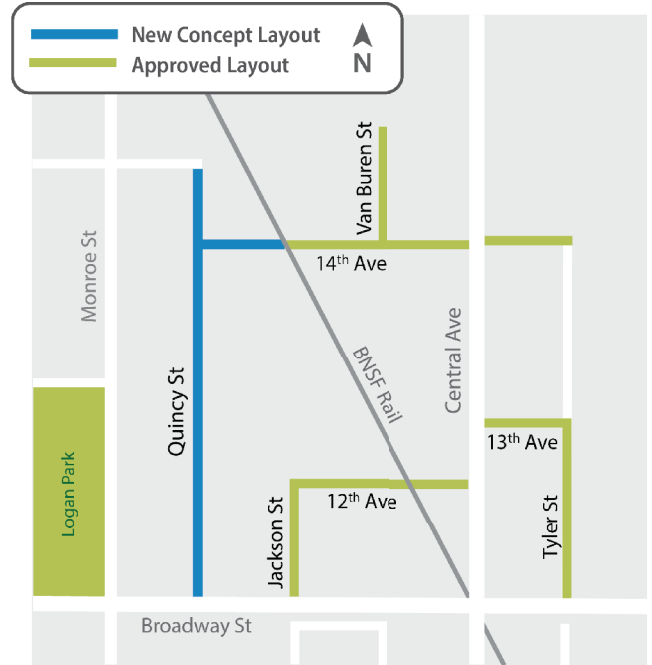
Logan Park Overview

● Package 1: Approved Layout (Green)

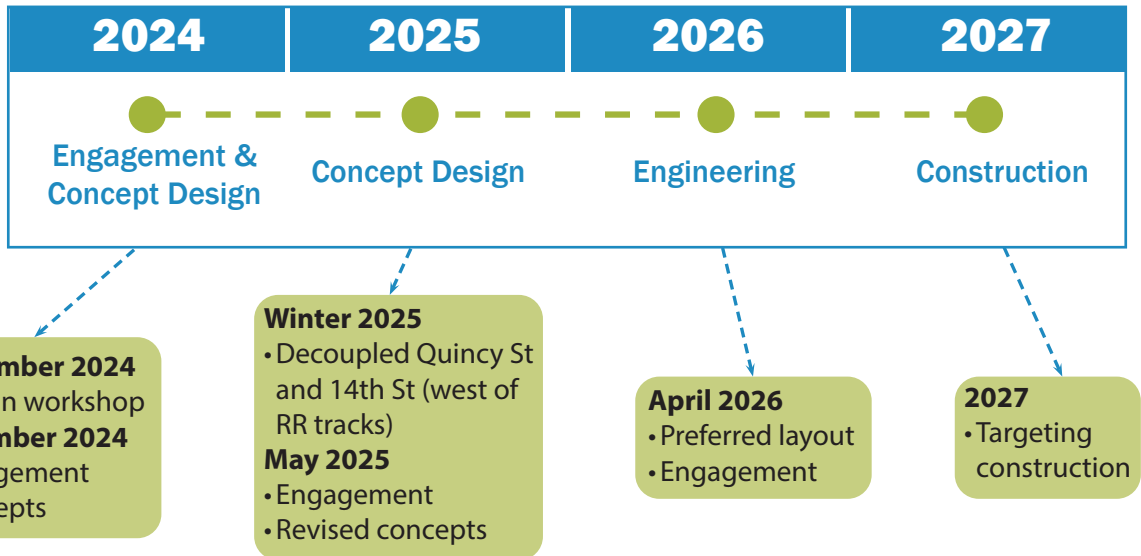
- Tyler St
- Jackson St
- Van Buren St
- 13th Ave NE
- 14th Ave NE – east of RR
- 12th Ave

● Package 2: New Concept Layout (Blue)

- Quincy St NE
- 14th Ave NE – Quincy to RR Xing



Overall Project Schedule



SCAN ME

Learn more

Visit our webpage online at:
MinneapolisMN.gov/Government/Projects/Logan-Park-Industrial



Logan Park Industrial

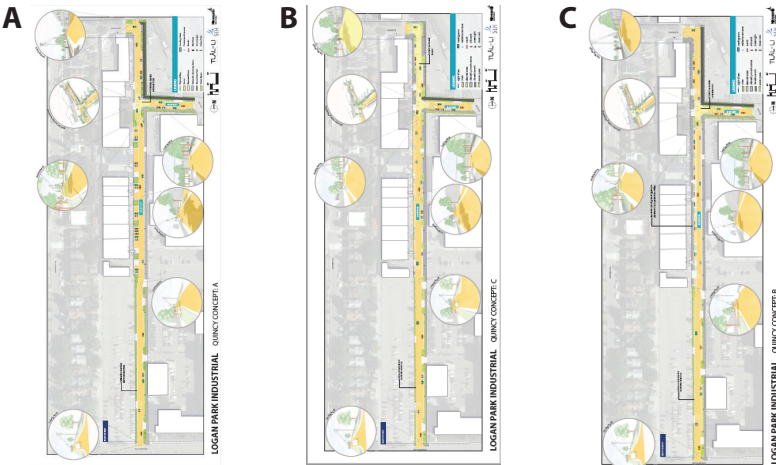
Neighborhood Street Reconstruction Project

Design Objectives

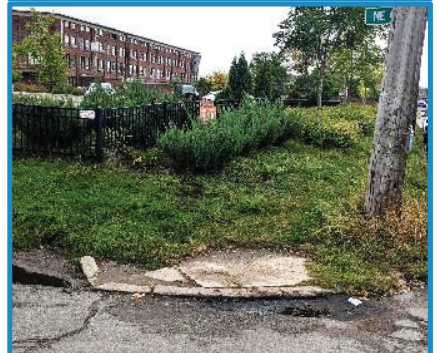
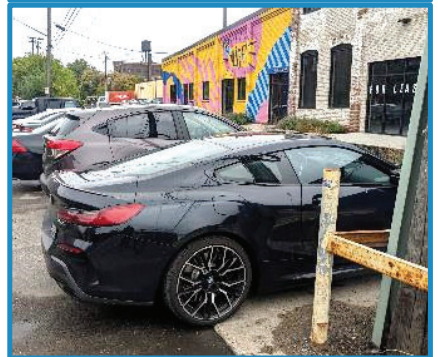
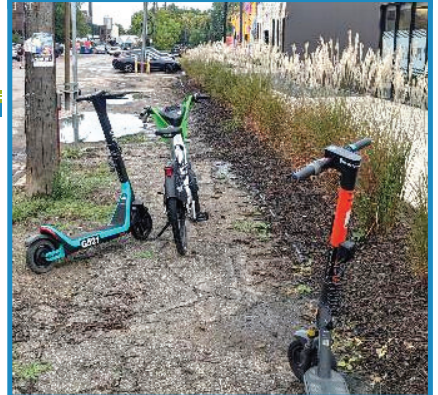
- Replace and upgrade old road, sidewalks, drainage and other public infrastructure
- Improvements to safety, access, and comfort for people walking, rolling, and biking (space/facilities, traffic calming, etc)
- Support land uses through access
- Improve legibility of the public spaces
- Provide opportunities for the use of brick within the street design

Design Process

3 Concept Alternatives presented for public feedback May 2025



- Each sought to maintain character, improve safety for all modes, maintain access, and offer amenities and greenspace
- Parking strategies included one-sided and two-sided parallel parking, as well as perpendicular parking options.
- Fire safety, maintenance, utilities, constructability, and stormwater management were all considered



Learn more

Visit our webpage online at:
[MinneapolisMN.gov/Government/
Projects/Logan-Park-Industrial](https://MinneapolisMN.gov/Government/Projects/Logan-Park-Industrial)

SCAN ME

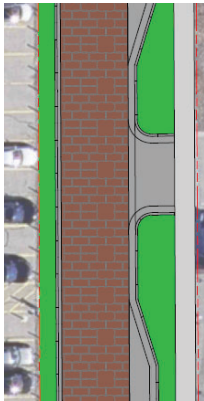


Logan Park Industrial

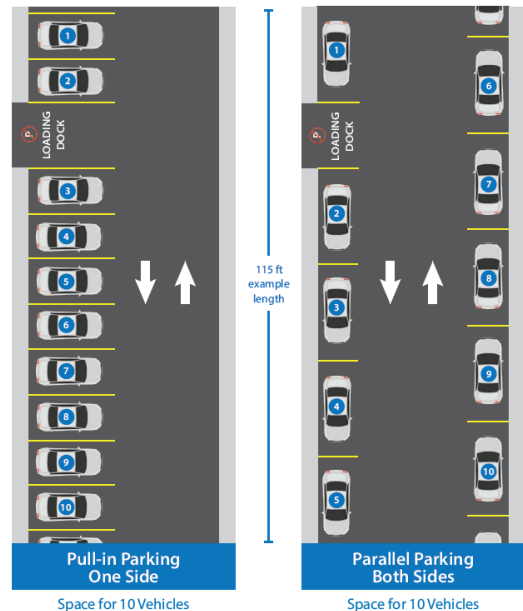
Neighborhood Street Reconstruction Project

Design Elements

- **Character:** New clay brick will be used on Quincy St NE, existing brick will be removed



- **Parking:** Proposes parallel parking on both east and west sides of Quincy St in the middle segment (Provides comparable parking supply to 1-sided perpendicular parking option)
- **Loading dock access:** Maintains access to each property



Learn more

Visit our webpage online at:
[MinneapolisMN.gov/Government/
Projects/Logan-Park-Industrial](https://MinneapolisMN.gov/Government/Projects/Logan-Park-Industrial)

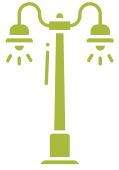
SCAN ME
Last updated: 4/7/2026



Logan Park Industrial

Neighborhood Street Reconstruction Project

Design Elements



- **Pedestrian lighting:**
Meets city guidance



- **Sidewalk:**
North of 14th (both sides)
South of 14th (east side)



- **Green space:** Trees limited, ornamental trees where possible



SCAN ME

Learn more

Visit our webpage online at:
[MinneapolisMN.gov/Government/
Projects/Logan-Park-Industrial](https://MinneapolisMN.gov/Government/Projects/Logan-Park-Industrial)

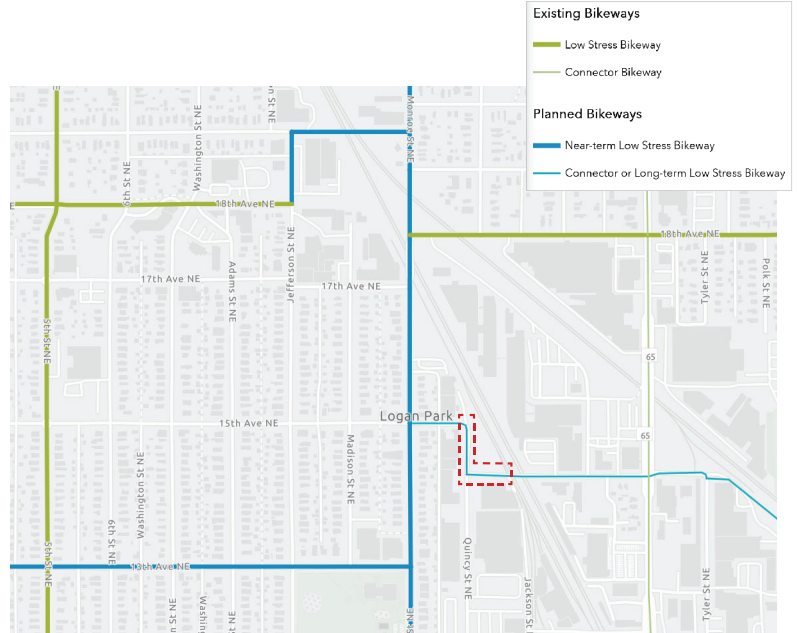


Logan Park Industrial

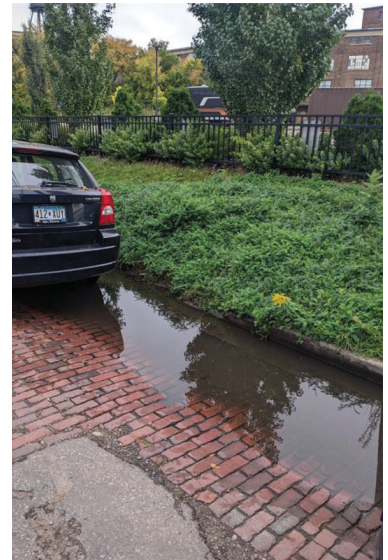
Neighborhood Street Reconstruction Project

Design Elements

- Bikeway Connections:**
Provides planned connection with a shared use path between 14th and 15th Aves NE



- Stormwater Considerations:**
 - Flooding:** Increased pervious area helps reduce street flooding
 - Water Quality:** More green space lowers pollution
 - Overall Benefit:** Higher resilience and less pollution to the Mississippi River



Learn more
Visit our webpage online at:
[MinneapolisMN.gov/Government/
Projects/Logan-Park-Industrial](https://MinneapolisMN.gov/Government/Projects/Logan-Park-Industrial)



LOGAN PARK INDUSTRIAL

Neighborhood Street Reconstruction Project

Design Elements

- **Fire safety:** Provides minimum clear zone for emergency vehicles on all reconstructed streets
- **Right-of-way:** Stays within the existing public property limits
Avoid impacts to private property including patios, steps, etc.



- **Constructability:** Adequate space for grading and utilities
- **Maintenance:** Allows for typical plowing and street sweeping



- **West curb:** Will be a mountable curb between parking and private property
- **Raised intersection:** Initial modeling and drainage analysis to confirm



SCAN ME

Learn more

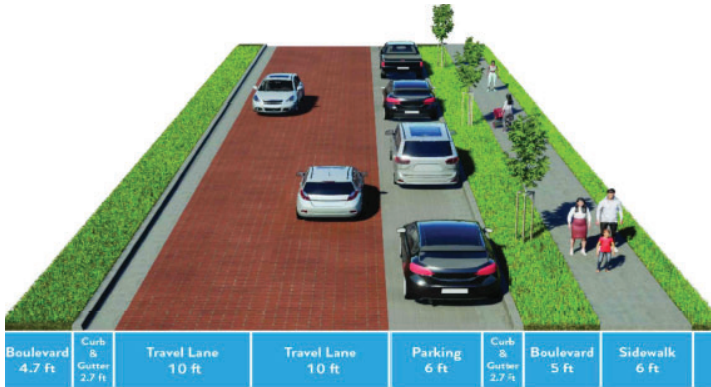
Visit our webpage online at:
[MinneapolisMN.gov/Government/
Projects/Logan-Park-Industrial](https://MinneapolisMN.gov/Government/Projects/Logan-Park-Industrial)



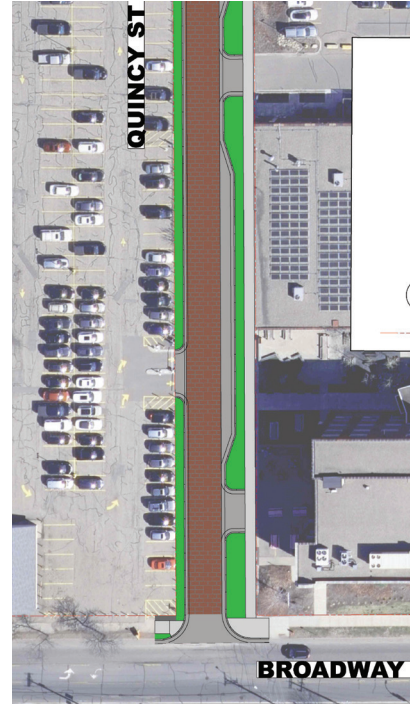
Logan Park Industrial

Neighborhood Street Reconstruction Project

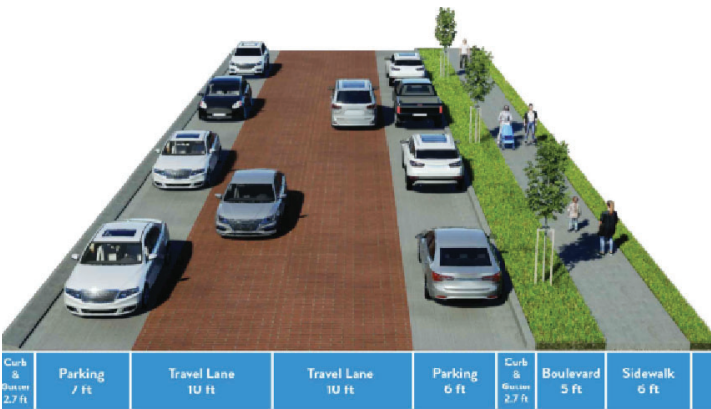
Quincy South (looking North)



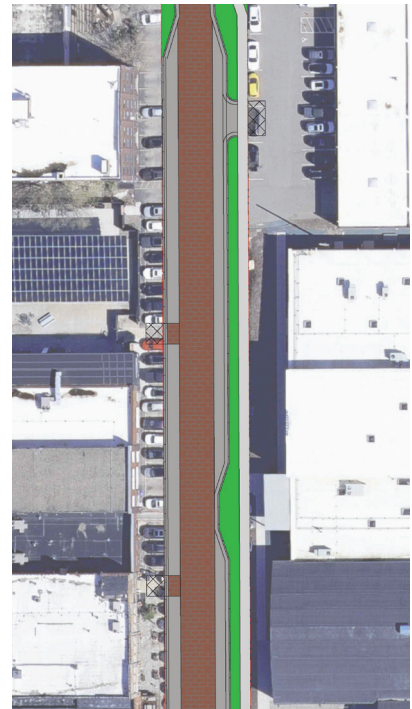
**TYPICAL SECTION D-D
QUINCY ST NE (SOUTH)**



Quincy Middle (looking North)



**TYPICAL SECTION C-C
QUINCY ST NE (MIDDLE)**



SCAN ME

Learn more

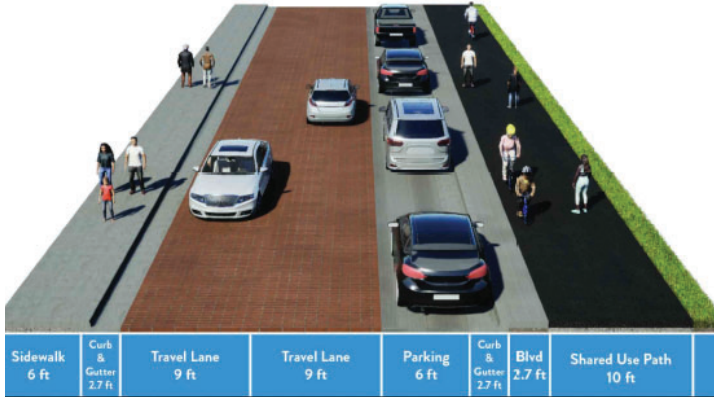
Visit our webpage online at:
[MinneapolisMN.gov/Government/
Projects/Logan-Park-Industrial](https://MinneapolisMN.gov/Government/Projects/Logan-Park-Industrial)



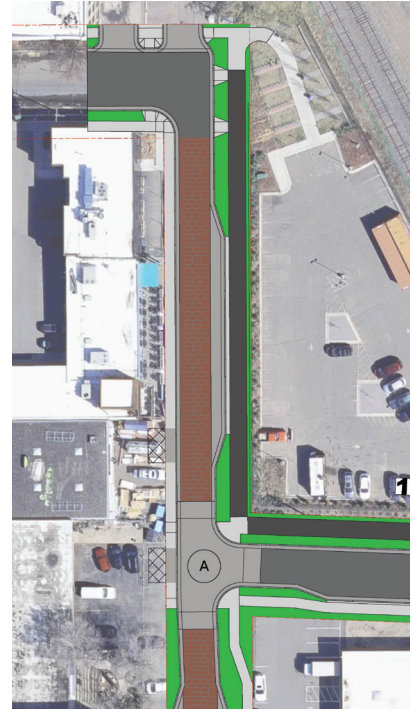
Logan Park Industrial

Neighborhood Street Reconstruction Project

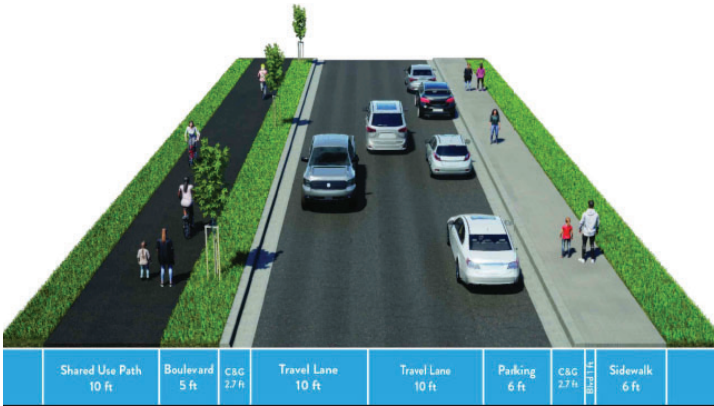
Quincy North (looking North)



**TYPICAL SECTION B-B
QUINCY ST NE (NORTH)**



14th Ave NE (looking East)



**PROPOSED TYPICAL SECTION A-A
14TH AVE NE (EAST OF QUINCY ST NE)**



SCAN ME

Learn more

Visit our webpage online at:
[MinneapolisMN.gov/Government/
Projects/Logan-Park-Industrial](https://MinneapolisMN.gov/Government/Projects/Logan-Park-Industrial)

