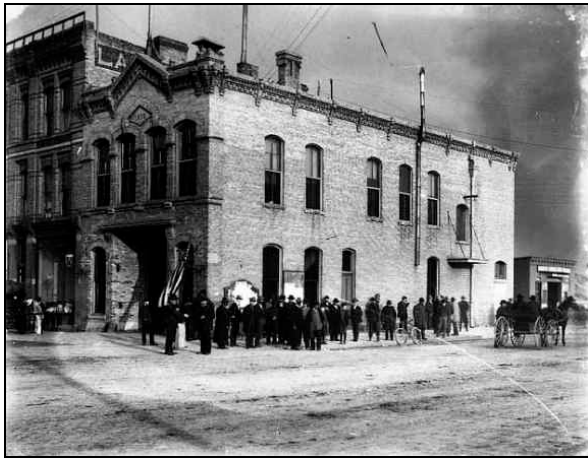


Minneapolis Fire Stations

Since formation of the paid department in 1879

Station 1 Station B opened on July 1, 1879 with Hose 1 and steamer “Minneapolis” (Engine 1) at 259 6th Avenue South in 1879 (originally open as volunteer Hose 1 on June 1, 1875). January 12, 1891 the department was reorganized and Station B became Station 1. This station was closed in 1909 when the new Station 1 was built across the street at its present location, 530 South 3rd Street.

- Hose 1 and steamer “Minneapolis” (Engine 1) in service 1879
- Ladder 2 added to Station 1 in 1909
- Ladder 2 move to Station 17 in 1928
- Water Tower in service 1925-1932
- Squad 1 added 1930 to 1931
-



259 6th Avenue South (1879)



530 South 3rd Street (1909)



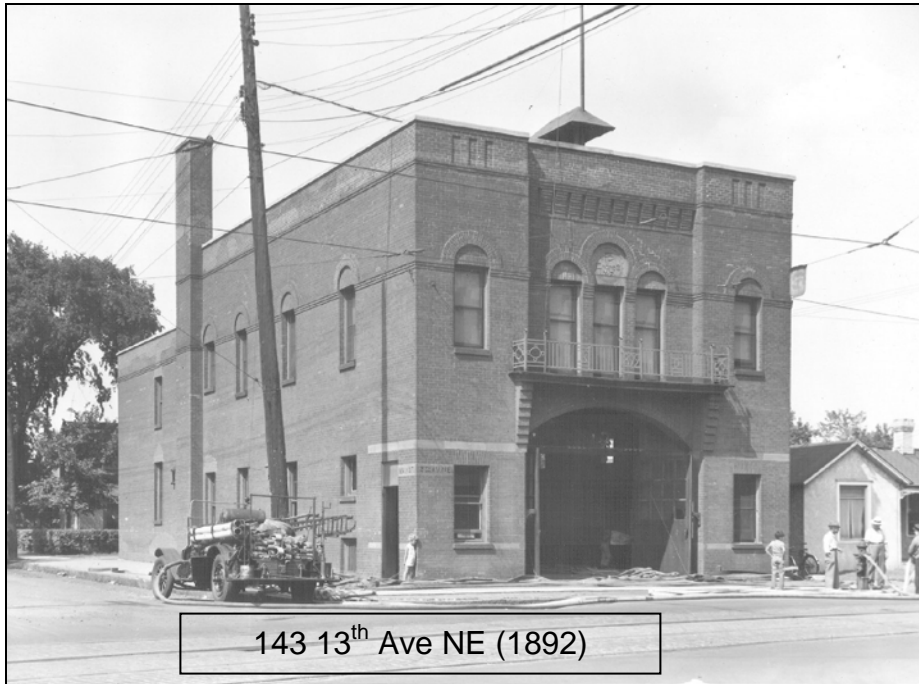
530 So 3rd Street

Minneapolis Fire Stations

Since formation of the paid department in 1879

Station 2 Station was built in 1858 by volunteers to house Germania Engine #2 on the southwest corner of 13th and Main Street Northeast. Station D opened July 1, 1879 with Chemical Ladder 2 and replaced by Hose 2 in 1881. January 12, 1891 the department was reorganized and Station D became Station 2. Station was rebuilt across the street in 1892 and again in 1961 at its present location of 143 13th Ave NE.

- Hose 2 in service 1881
- Engine 2 in service 1893



Minneapolis Fire Stations

Since formation of the paid department in 1879

Station 4 Station F opened July 1, 1879 with Hose 4 located 116-118 Plymouth Avenue North. It originally opened October 1875 with volunteers. January 12, 1891 the department was reorganized and Station F became Station 4. This station was closed and sold in 1884 and relocated to 252 12th Avenue North with Engine 4 and Ladder 4. This location closed in 1940 when new Station 4 was opened on February 13, 1940 at its present location at 1101 North 6th Street.

- Hose 4 in service 1879
- Ladder 4 in service 1888
- Steamer 3 in service 1883; Engine 4 replaced Steamer 3 in 1885
- Chemical 4 1902-1912
- Boat 4 in service 2006



252 12th Ave N. (1894)



1101 No 6th Street (1940)

Minneapolis Fire Stations

Since formation of the paid department in 1879

Station 5 Originally opened as Station G in 1879 with Hose 5 and 1880 with Ladder 3 at 1301 Washington Avenue South. January 12, 1891 the department was reorganized and Station G became Station 5. 1887 station was relocated to 1501 South 4th Street (currently the Mixed Blood Theater). Station 5 relocated to its present location on November 30, 1962 at 2700 Bloomington Avenue South (opened with Engine 7 that became Engine 5 the same day).

- Hose 5 1879
- Ladder 3 in service 1880
- Engine 5 in service October 1887
- Ladder 3 moved to Station 7 1987
- Salvage added 1977



1301 Washington Ave So (1879)



1501 4th Ave So (1887)



2700 Bloomington Ave So (1962)

Minneapolis Fire Stations

Since formation of the paid department in 1879

Station 6 Originally opened as Station H with Hose 6 and Steamer located at 228 South 12th Street in 1883. January 12, 1891 the department was reorganized and Station H became Station 6. It was relocated in 1931 to 30 South 13th Street with Engine 6, Ladder 11, Rescue 1 and Smoke Ejector. Relocated in November 1982 to its present location with Engine 6 and Ladder 11 and Chief 1 at 121 East 15th Street.

- Hose 6 and Steamer 4 in service 1883
- Engine 6 in service 1885
- Smoke Ejector in service 1926 - 1981
- Ladder 11 in service 1928
- Engine 26 moved into station when Station 26 closed in 1947-1971
- Rescue 1 added 1931 to 1971
- Rescue 1 reorganized February 2001
-



Station H, 228 South 12 St (1883)



30 South 13th St (1931)



121 East 15th Street (1982)

Minneapolis Fire Stations

Since formation of the paid department in 1879

Station 7 Originally opened as Station I in March 1884 at 2105 East Franklin Avenue South. January 12, 1891 the department was reorganized and Station I became Station 7. In 1887 a two-story veterinary infirmary was added at the rear of the station. It was relocated in 1937 to 2011 21st Avenue South (currently occupied as a religious organization) and relocated in 1962 to its present location at 2000 East Franklin Avenue with Engine 5 and Ladder 3.

- Engine 5 and Engine 7 switched numeric designators in November 1962.



2105 East Franklin (1884)



2211 21st Ave So (1937)



2000 East Franklin Ave (1962)

Minneapolis Fire Stations

Since formation of the paid department in 1879

Station 8 Originally open as Station J with Chemical 2 at 2749 Blaisdell Avenue South in 1884. January 12, 1891 the department was reorganized and Station J became Station 8 and was rebuilt on the same site in 1940.

- Chemical 2 in service 1884 to 1895
- Hose 8 in service January 1885, Engine 8 in service 1887
- Ladder 5 in service November 1889 to 1913, deleted, back in 1914 to 1929, moved to Station 23 and back in 1934. Moved to Station 17 2003.



Minneapolis Fire Stations

Since formation of the paid department in 1879

Station 11 Built in 1873 to house Cataract Engine #1 at 28-2nd Street Southeast. Originally open as Station C with Hose C and Steamer Cataract on July 1, 1879. January 12, 1891 the department was reorganized and Station C became Station 11. 1885 a two-story brick addition added. The station was closed in 1926 when new Station 11 opened at its present location of 229 6th Street Southeast with Engine 11, Ladder 9, and Engine 9. An addition was added sometime in the 1970's.

- Ladder 2 in service 1886
- Chemical 3 in service 1886 and disbanded in 1910
- Ladder 9 in service 1909 (Ladder 2 moved to Station 1)
- Auxiliary #2 in service 1916 to 1921
- Ladder 9 became Rescue 9 2003



28 2nd St SE (1873)



After several extensive remodelings



229 6th Street SE (1926)



229 6th St SE

Minneapolis Fire Stations

Since formation of the paid department in 1879

Station 12 Originally open as Station M with Hose 12 located at 700 Jackson Street Northeast in 1886 and Engine 12 added in 1889. January 12, 1891 the department was reorganized and Station M became Station 12. Station and engine closed June 8, 1920. September 9, 1974 new Station 12 was built at its present location of 5401 33rd Avenue South.



700 Jackson St NE (1886)



5401 33rd Ave So

Minneapolis Fire Stations

Since formation of the paid department in 1879

Station 14 Originally open as Station O located at 2023 North 4th Street in 1887 with Chemical 4. Engine and Hose 14 added in 1888. January 12, 1891 the department was reorganized and Station O became Station 14. New Station 14 was relocated in 1940 to 1704 33rd Avenue North and then to its present location at 2002 Lowry Avenue North in 2006. The old site at 1704 33rd Avenue North is now home to EMS Central.

- Chemical 4 in service 1887, moved to Station 4 in 1902
- Hose 14 and Engine 14 in service 1888
- Ladder 10 in service from Station 25 in 1940
- Combination 14 replaces Engine 14 and Ladder 10 in 1941
- Engine 14 and Ladder 10 replace Combination 14 in 1960

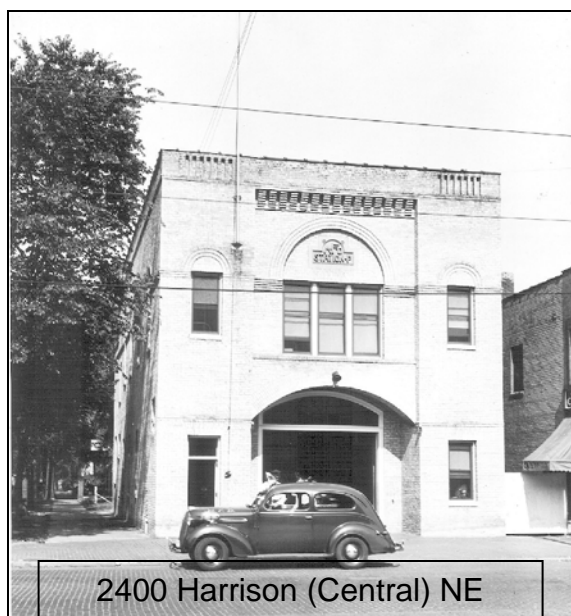


Minneapolis Fire Stations

Since formation of the paid department in 1879

Station 15 Originally opened as Station P with Hose 15 located at 2400 Harrison NE (now Central Avenue) in 1889. January 12, 1891 the department was reorganized and Station P became Station 15. Station was closed in 1945 when Engine 15 relocated to former Station 29 at 2701 Johnson Street Northeast and that station renumbered to Station 15. A ladder bay added in 1964 to accommodate Ladder 7's 100-foot aerial ladder truck.

- Hose 15 in service 1889
- Chemical 6 in service 1890 to 1898
- Engine 15 in service 1892
- Ladder 7 in service from Station 23 in 1915
- Combination 15 replace Engine 15 and Ladder 7 in 1945
- Engine 15 and Ladder 7 replace Combination 15 in 1960
- Ladder 7 taken out of service in 2003



Minneapolis Fire Stations

Since formation of the paid department in 1879

Station 16 Station R open in 1890 located at 429 James Avenue North with Engine 16. January 12, 1891 the department was reorganized and Station R became Station 16. Closed in 1959 and reopened at its present location at 1600 Glenwood Avenue North.



429 James Ave No (1890)



1600 Glenwood (1959)

Minneapolis Fire Stations

Since formation of the paid department in 1879

Station 17 Station Q open in 1890 originally at 3448 Chicago Ave with Hose 17 and Chemical 7. January 12, 1891 the department was reorganized and Station Q became Station 17. In 1941 the station was sold (now a photo studio) and moved to 821 East 35th Street with Engine 17. 1992 a new Station 17 was built at 330 East 38th Street, the 35th Street location is now a bookstore.

- Hose 17 and Chemical 7 in service 1890
- Engine 17 in service 1891
- Chemical 7 disbanded 1904
- Ladder 2 in service 1928 from Station 1, disbanded December 1934



3448 Chicago Ave S (1890)



821 East 35th St (1941)



330 East 38th St (1992)

Minneapolis Fire Stations

Since formation of the paid department in 1879

Station 19 Originally located at 2001 University Ave Southeast in 1894 with Engine 19, Ladder 6 and Chemical 9. A new Station 19 is relocated 1976 to its present location at 200 Ontario Street Southeast. The University location is now an architectural firm. 1895 Lt. Rober of the Minneapolis Fire Department invented the game of softball.

- Engine 19, Ladder 6 and Chemical 9 in service 1894
- Chemical 9 disbanded 1897
- Engine 19 and Ladder 6 become Combination 19 in 1945
- Engine 19 and Ladder 6 replace Combination 19 in 1950
- Ladder 6 disbanded in 1987



2001 University Ave SE (1884)



2001 University Ave SE (1936)



200 Ontario Ave SE (1976)

Minneapolis Fire Stations

Since formation of the paid department in 1879

Station 20 Originally located at 4100 Lyndale Avenue North in 1894 and closed in 1964 when new Station 20 open at 4646 Humboldt Avenue North.

- Engine 20 in service 1894 accompanied by two hose wagons; second wagon deleted in 1899
- Ladder 10 in service from Station 18 in 1921, moved to Station 25 in 1928



Minneapolis Fire Stations

Since formation of the paid department in 1879

Station 21 Originally located at 3800 Minnehaha Avenue South in 1894 with Chemical 10. Closed in 1961 when new Station 21 was relocated to its present location at 3209 East 38th Street with Engine 21 and Ladder 2. The Minnehaha location is now Patrick's Cabaret.

- Chemical 10 in service 1894 to 1901
- Hose 21 in service replacing Chemical 10 1901
- Ladder 8 in service 1906
- Engine 21 in service 1921
- Combination 21 replacing Engine 21 and Ladder 8 1934
- Engine 21 and Ladder 2 replace Combination 21 1949
- Ladder 2 disbanded 2003
- Ladder 2 back in service 2008

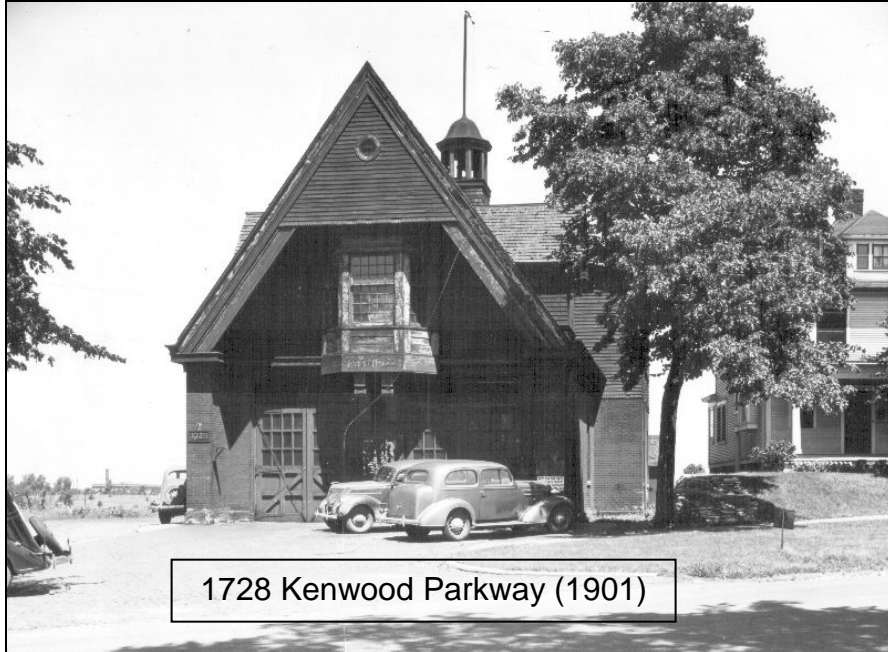


Minneapolis Fire Stations

Since formation of the paid department in 1879

Station 22 Originally located at 1816 Kenwood Parkway in 1892 with Chemical 8. 1895 station is closed. New Station 22 opened at 1728 Kenwood Parkway in 1901 with Hose 22. The station and engine was eliminated in 1932. Station and Engine 22 reorganized in 1993 at 3025 Market Plaza with manpower from closing of Station 13.

- Hose 22 in service 1901
- Engine 22 in service 1902

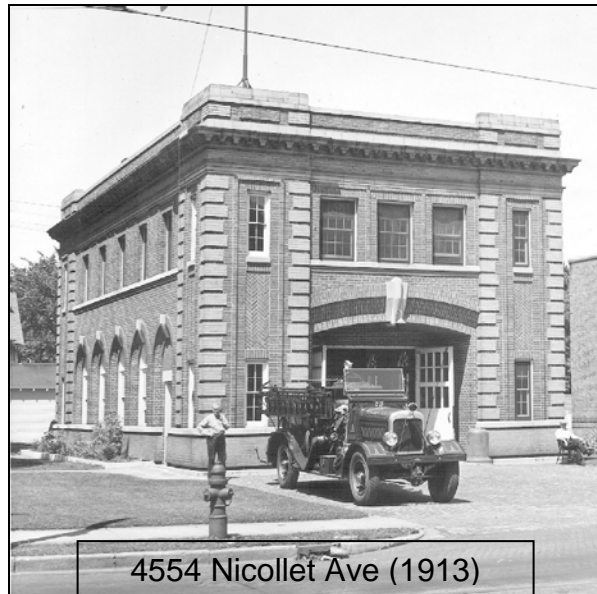


Minneapolis Fire Stations

Since formation of the paid department in 1879

Station 27 Originally located at 4305 Harriet Avenue South in 1911 with Chemical 2. The station was relocated to 4554 Nicollet Avenue South in 1913 and to its present location in 1993 at 5410 Nicollet Avenue South.

- Hose 27 replaces Chemical 2 1911
- Engine 27 in service 1923
- Combination 27 in service 1934 to 1960
- Additional stall added for ladder truck in 1952
- Engine 27 and Ladder 8 replace Combination 27 1960
- Ladder 8 out of service 2003
- Ladder 5 moved in from Station 17 2008



Minneapolis Fire Stations

Since formation of the paid department in 1879

Station 28 Originally located at 2724 West 43rd Street in 1914 with Engine 28. Station closed and relocated in 1993 to its present location at 2810 West 50th Street. West 43rd Street station now Café 28.

- Engine 28 in service 1914
- Ladder 12 in service 1922, disbanded in 1929



2724 West 43rd St (1914)



2810 West 50th St (1993)