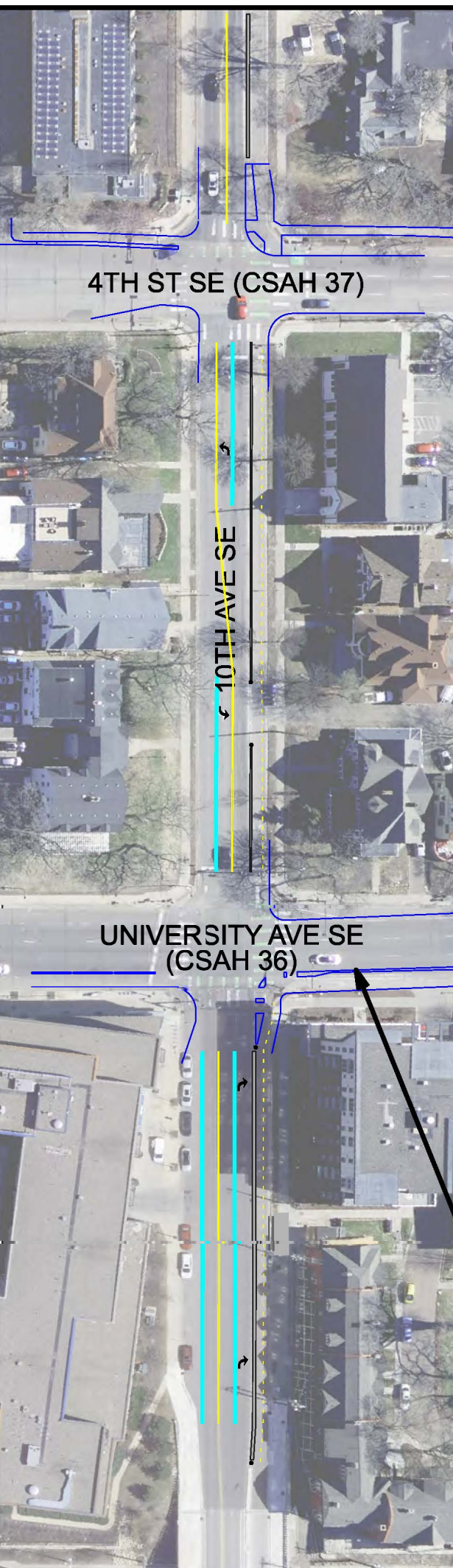


LAYOUT CHANGES SINCE 30%:

- 1) CURB EXTENSION REMOVED AT 15TH AVENUE SE AND 8TH STREET SE AND REPLACED WITH CHICANE-MEDIAN TREATMENT. CURB EXTENSION ANTICIPATED TO BE IMPLEMENTED AS A PART OF METRO TRANSIT H LINE STOP IN THE FUTURE
- 2) CURB EXTENSION ADDED IN THE NE QUADRANT OF 10TH AVENUE SE AT 8TH STREET SE TO FACILITATE FUTURE CONNECTION TO COMO AVENUE BIKEWAY AND RELOCATES METRO TRANSIT STOP #16047 TO THE CURB EXTENSION
- 3) TRAFFIC CIRCLES REMOVED AT THE INTERSECTIONS OF 12TH AVENUE SE AT 6TH STREET SE AND 13TH AVENUE SE AT 7TH STREET SE TO ACCOMMODATE UMN BUS ROUTE #125
- 4) ADDED CONCRETE CHICANE ON SOUTH SIDE OF 14TH AVE SE AT 5TH STREET SE

10TH AVE SE INSET



DRAWN BY: SRE