

Hennepin Ave S Reconstruction Project

(W Lake St. to 26th St)

Construction & Traffic Impact Update

August 24 - 30, 2025



||||| Irrigation & Landscaping/sod

Construction work: Partial Intersection Restriction Sanitary Sewer Conduit Work Storm Sewer

Traffic impact: Lane Closures/Work Zone Travel Lanes Roadway Closure Roadway & Sidewalk work

Page 1



WHAT'S HAPPENING

Lake St to 26th St

- Hennepin Ave is open to traffic.
- Buses have returned to Hennepin
- There will be misc. work in the area during the spring months
- Misc. punchlist work will continue



WHAT TO EXPECT

Lake St to 26th St

- Roadway and utility punchlist work and final landscaping will occur in the spring months. This will require periodic short term closures of the bus/parking lane during the day.
- Cross streets will at times be reduced to 1-lane.
- Parking lanes will be closed at certain locations on side streets.
- Business access will remain open during the construction.
- Pedestrian detours will be set up as needed. Greater impacts can be expected at intersections where work is occurring.



STAY CONNECTED

Visit the project website

Sign up for project updates on the project website.

[Minneapolismn.gov/government/projects/hennepin-ave-s/](https://minneapolismn.gov/government/projects/hennepin-ave-s/)



CONTACT US

Adam Hayow, Project Engineer - Public Works

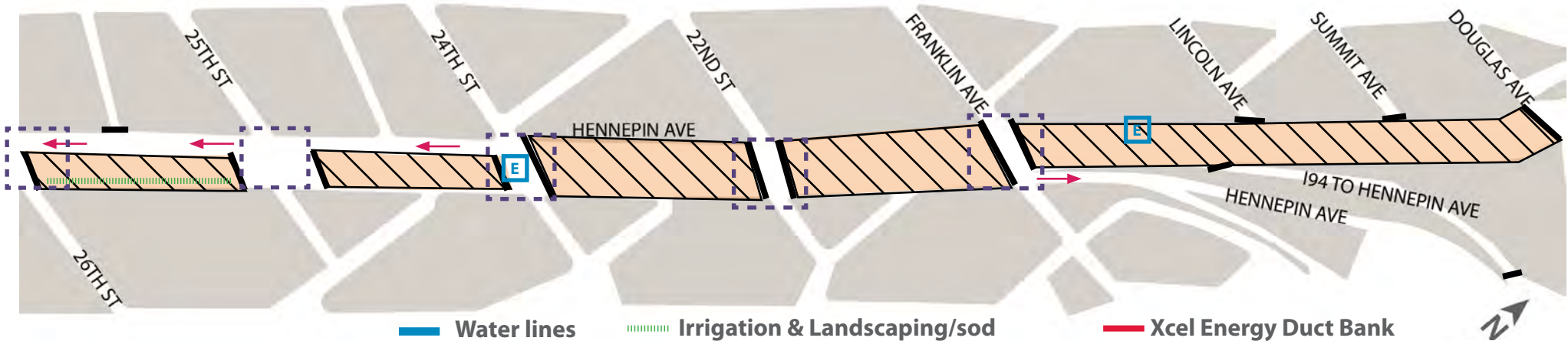
📞 612-673-2172 📧 adam.hayow@minneapolismn.gov

Hennepin Ave S Reconstruction Project

(W 26th St. to Douglas Ave)

Construction & Traffic Impact Update

August 24 - 30, 2025



Construction work:



Partial Intersection Restriction

Sanitary Sewer



Conduit Work



Storm Sewer

Traffic impact:



Lane Closures/Work Zone



Travel Lanes



Roadway Closure



Roadway & Sidewalk work

Page 2



WHAT'S HAPPENING

26th St to Douglas Ave

- Roadway construction continues.
- Hennepin is closed from Douglas to 24th.
- Work consists of concrete curb, concrete sidewalks, signal and lighting electrical work, and roadway paving



WHAT TO EXPECT

26th St to Douglas Ave

- Roadway & Utility work using heavy equipment will increase noise, vibration, and dust in work areas and sidewalks.
- Cross streets will at times be reduced to 1-lane or closed to traffic.
- Parking lanes will be closed at certain locations on side locations.
- Business access will remain open during the construction.
- Pedestrian detours will be set up as needed. Greater impacts can be expected at intersections where work is occurring.
- Traffic Delays in the area, closures, and detours.



STAY CONNECTED

Visit the project website

Sign up for project updates on the project website.

[Minneapolismn.gov/government/projects/hennepin-ave-s/](https://minneapolismn.gov/government/projects/hennepin-ave-s/)



CONTACT US

Adam Hayow, Project Engineer - Public Works

612-673-2172 | adam.hayow@minneapolismn.gov

Hennepin Ave S Reconstruction Project

(W Lake St. to Douglas Ave.)

Block-by-Block Work Summary
August 24 - 30, 2025

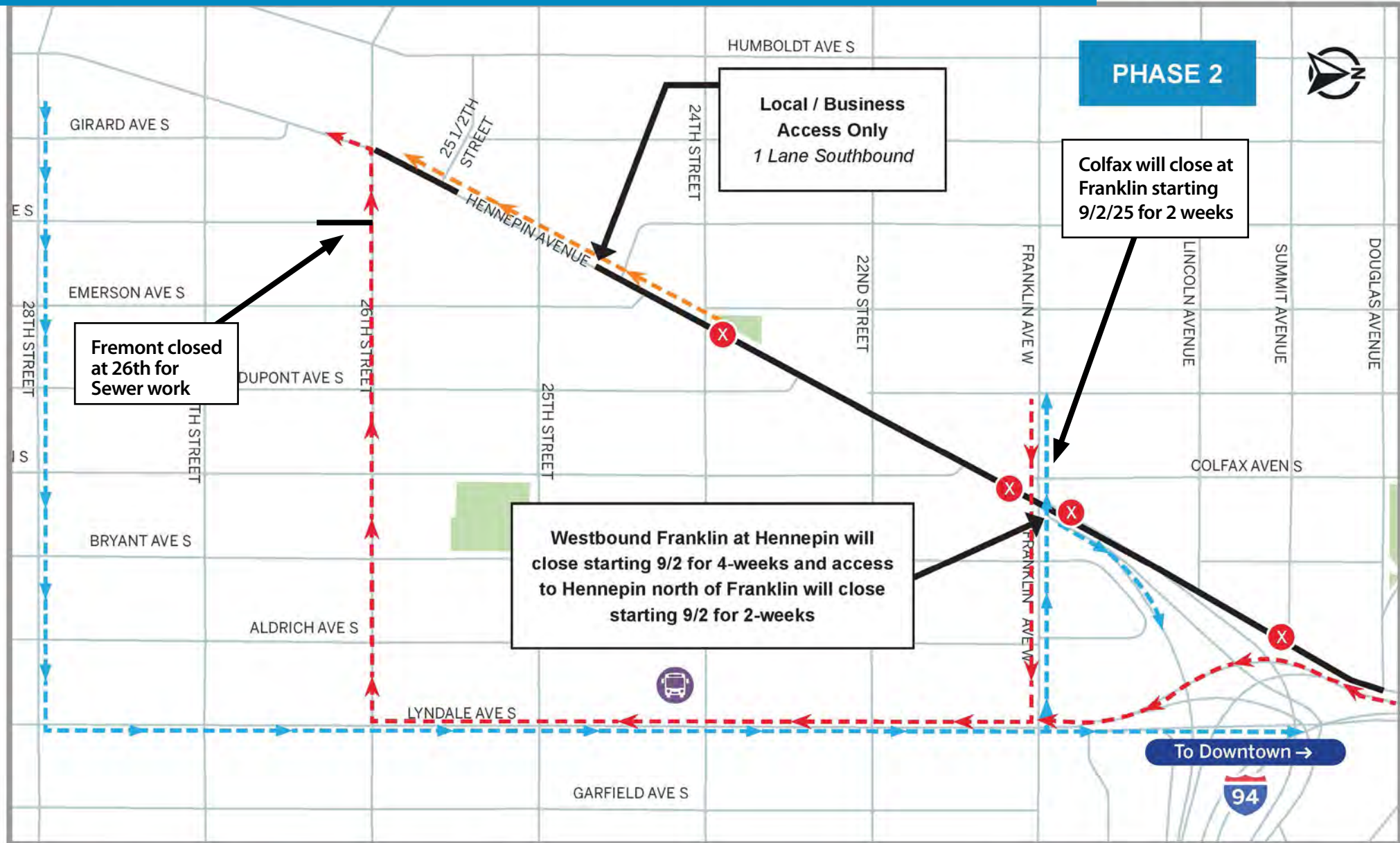


STREET BLOCK	PROJECT RELATED WORK	ANTICIPATED ROAD/PEDESTRIAN RESTRICTIONS				
		TEMPORARY PED RAMPS	PARKING RESTRICTIONS	TWO LANES OPEN (5-9 AM + 3-7 PM)	ONE LANE OPEN	NOTES
Lake St. Intersection						
Lake St. - Lagoon Ave	Punchlist					
Lagoon Ave Intersection						
Lagoon Ave -29th St.	Punchlist					
29th St. Intersection						
29th St. - 28th St.	Punchlist					
28th St. Intersection						
28th St. - 27th St.	Punchlist					
27th St. Intersection						
27th St - 26th St.	Punchlist					
26th St. Intersection						
26th St. -25th St.	Irrigation and topsoil installation	X	X		X	Single Business access lane south bound
25th St. Intersection	Sidewalk work	X	X			
25th St - 24th St.	Sidewalk work	X	X		X	Single Business access lane south bound
24th St. Intersection	Electrical and Sidewalk work	X	X			
24th St. - 22nd St.			X		X	Closed
22nd St. Intersection		X	X			
22nd St. - Franklin Ave.	Sidewalk work		X			Closed
Franklin Ave. Intersection			X			
Franklin Ave -Lincoln Ave.	Asphalt Paving and electrical work		X			Closed
Lincoln Ave. Intersection	Asphalt Paving	X	X			Closed
Lincoln Ave. - Summit Ave.	Asphalt Paving		X			Closed
Summit Ave. Intersection	Asphalt Paving	X	X			Closed
Summit Ave. - Douglas Ave.	Asphalt Paving		X			Closed

Hennepin Ave S Reconstruction Project

(W Lake St. to Douglas Ave.)

Detour Routes
August 24 - 30, 2025



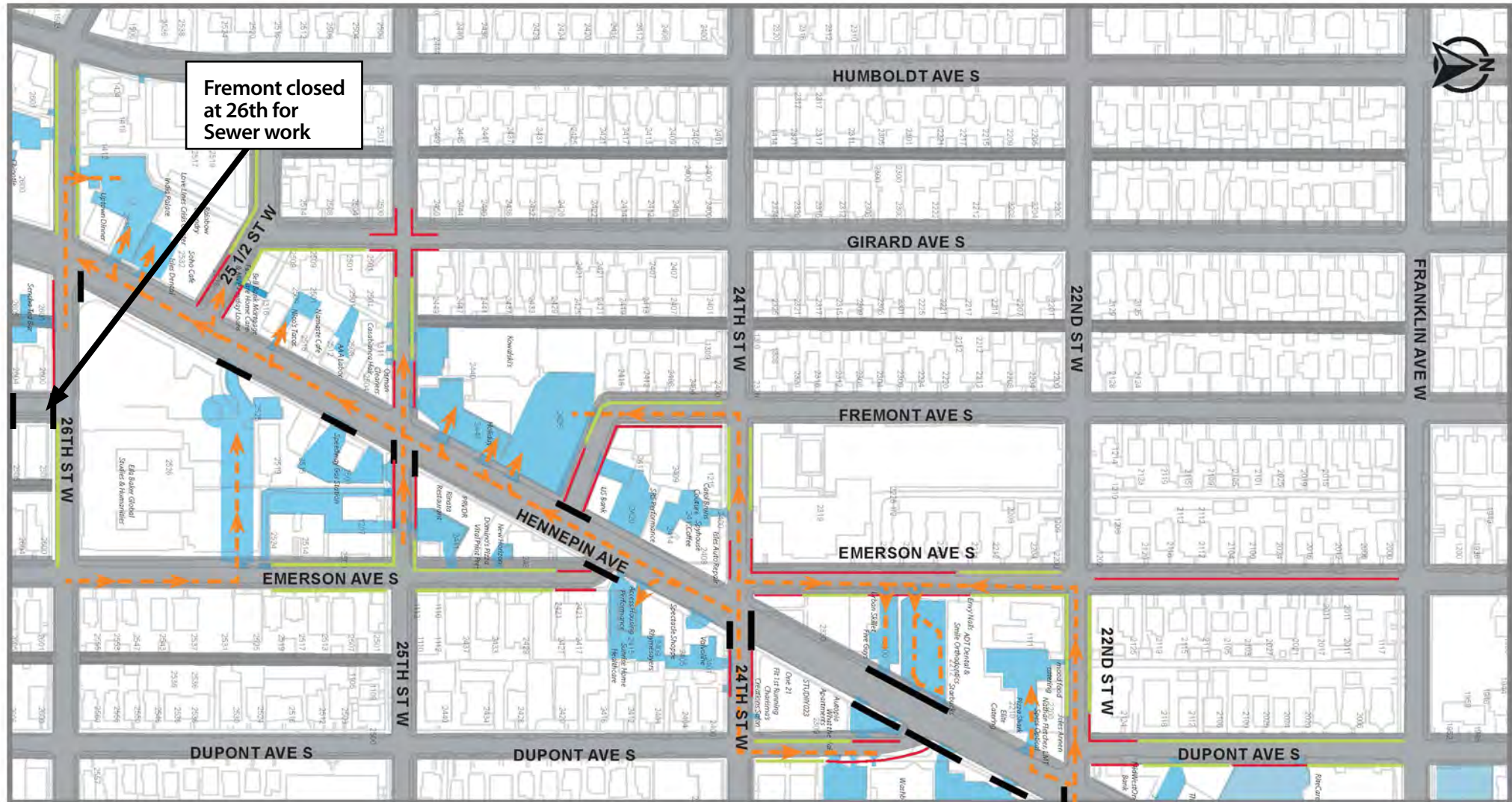
Detour Route N Detour Route S Phase 2 Construction zone Business Access Route Road Closed Bus Detour

Hennepin Ave S Reconstruction Project

(W Lake St. to Douglas Ave.)

Business Parking / Access

August 24 - 30, 2025



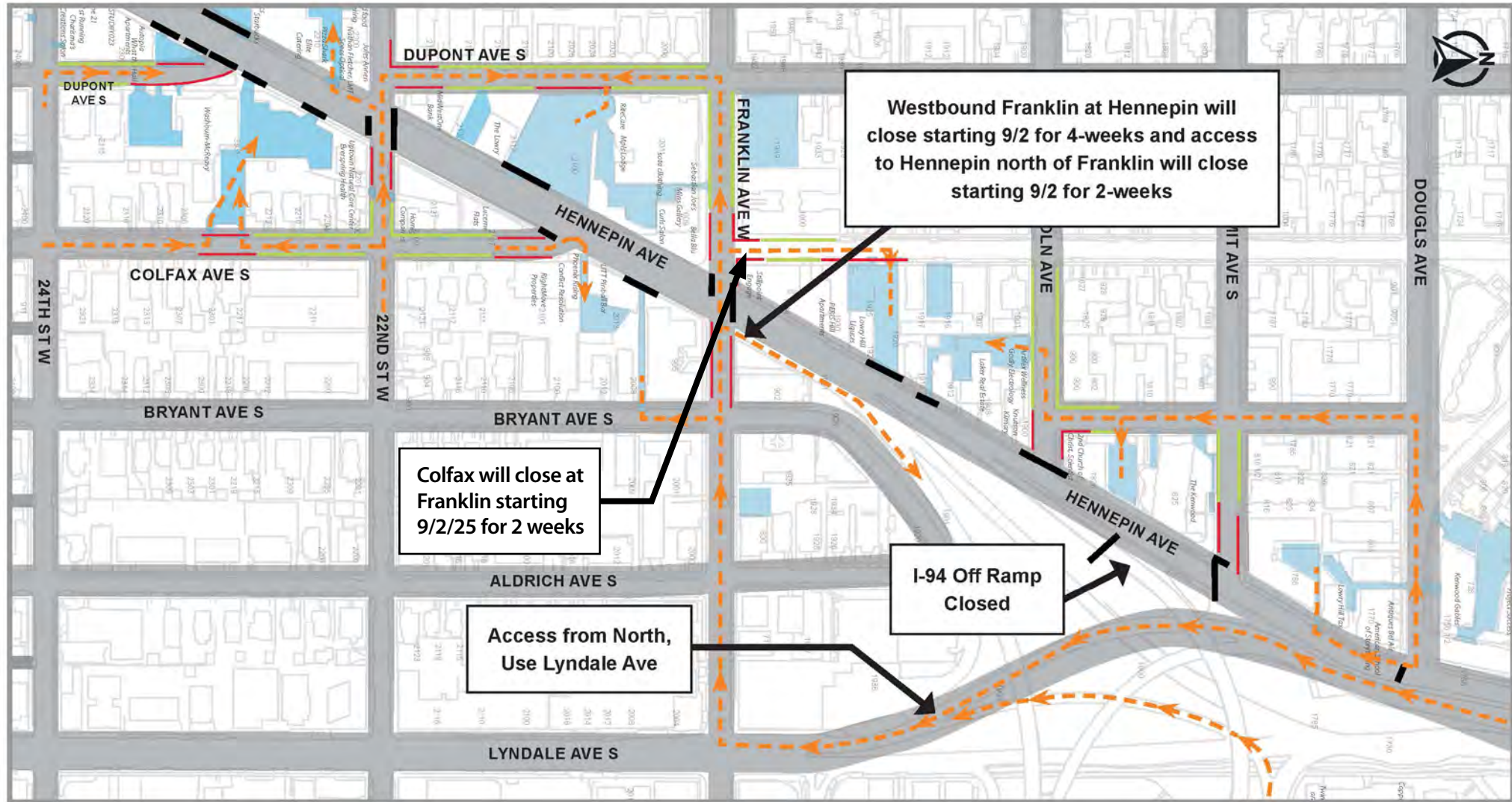
- Private/Business parking
- No Parking
- Onstreet Parking
- Road or Access Closed
- Business Access Route

Hennepin Ave S Reconstruction Project

(W Lake St. to Douglas Ave.)

Business Parking / Access

August 24 - 30, 2025



■ Private/Business parking
 ■ No Parking
 ■ Onstreet Parking
 ■ Road or Access Closed
 → Business Access Route

Cleaner Water, Healthier Lakes: Stormwater Improvements on Hennepin Avenue

The Hennepin Avenue project is adding new features to help keep our lakes and river clean. These changes will remove trash, 70% of the sediment and about 30% of the phosphorus from stormwater. Phosphorus makes algae grow, which can make the water unsafe for people and animals. Water from this street goes to Lake Bde Maka Ska, Lake of the Isles, or the Mississippi River. Each has different water quality rules, but this project is designed to meet the one with the highest clean water standards.



Crews are adding about 70 stormwater BMPs (Best Management Practices). These are special features that catch, hold, and infiltrate rainwater rather than flowing directly into lakes or rivers. These features also make us more resilient to climate change, provide pollinator habitat and reduce the urban heat island. This project includes:

- Underground boxes to hold and infiltrate stormwater
- Rain gardens and bioswales to soak up and clean water
- Tree trenches to collect and provide water for street trees
- Stormwater planters to catch and clean runoff

Together, these can hold as much water as a football field covered with almost 14 inches of water. While Lake of the Isles and Lake Bde Maka Ska already have better water quality than state standards, these new features will help keep them – and our other lakes and rivers – clean and healthy for the future.



Contact us

Adam Hayow, Project Manager - Public Works

📞 612-673-2172 📧 adam.hayow@minneapolismn.gov

Justin Gese, Stakeholder Coordinator/Construction Manager - SEH

📞 612-209-0731 📧 jgese@sehinc.com

For reasonable accommodations or alternative formats:

Please contact Adam Hayow at 612-673-2172 or adam.hayow@minneapolismn.gov

People who are deaf or hard of hearing can use a relay service to call 311 at 612-673-3000. TTY users call 612-263-6850.

Para asistencia, llame al 311. Rau kev pab 311. Hadii aad Caawimaad u baahantahay 311.

Hennepin Ave S Reconstruction Project

(W Lake St. to Douglas Ave.)

In-Progress Images

August 24 - 30, 2025



Hennepin Ave S Reconstruction Project

(W Lake St. to Douglas Ave.)

In-Progress Images

August 24 - 30, 2025



Hennepin Ave S Reconstruction Project

(W Lake St. to Douglas Ave.)

In-Progress Images
August 24 - 30, 2025



Hennepin Ave S Reconstruction Project

(W Lake St. to Douglas Ave.)

In-Progress Images

August 24 - 30, 2025



Hennepin Ave S Reconstruction Project

(W Lake St. to Douglas Ave.)

In-Progress Images

August 24 - 30, 2025



Hennepin Ave S Reconstruction Project

(W Lake St. to Douglas Ave.)

In-Progress Images

August 24 - 30, 2025

