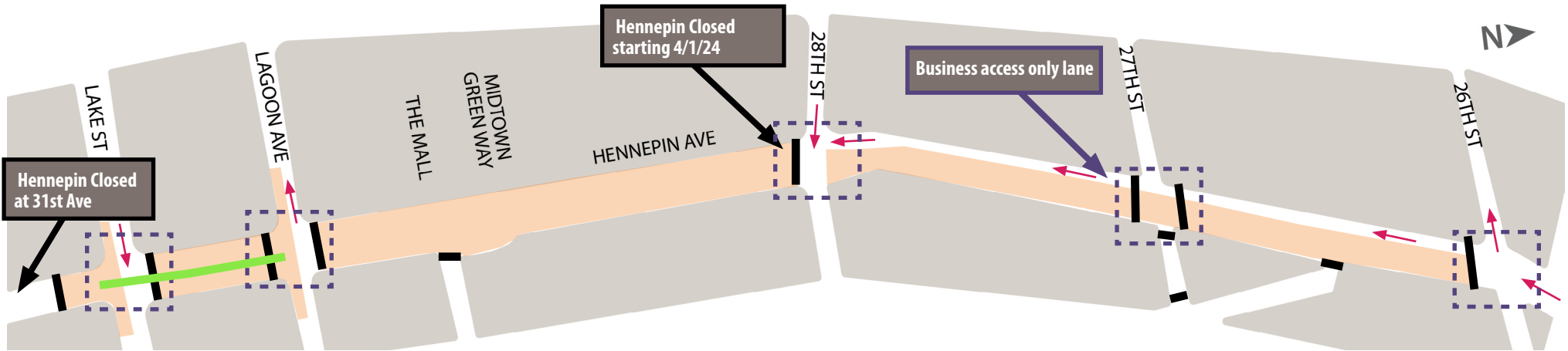


# Hennepin Ave S Reconstruction Project

(W Lake St. to 26th St)

## Construction & Traffic Impact Update

April 21 – 27, 2024



Page 1

**Construction work:** Partial Intersection Restriction Sanitary Sewer Replacement

**Traffic impact:** Lane Closures/Work Zone Travel Lanes Roadway Closure

### WHAT'S HAPPENING

#### Lake St to 26th St

- The City Roadway construction has begun. This work includes pavement removals, clearing activities and street car rail removals.
- Both Lake St and Lagoon are reduced to 1-lane through the intersections
- Deep Sanitary Sewer replacement will begin at the Lake St intersection and progress north.

### WHAT TO EXPECT

#### Lake St to 26th St

- Roadway & Utility work using heavy equipment will increase noise, vibration, and dust in work areas and sidewalks.
- Cross streets will at times be reduced to 1-lane.
- Parking lanes will be closed at certain locations on side streets.
- Business access will remain open during the construction.
- Pedestrian detours will be set up as needed. Greater impacts can be expected at intersections where work is occurring.
- Metro Transit buses will be detoured over to Lyndale Ave. via Lake St or 31st St. and 24th St.

### STAY CONNECTED

#### Visit the project website

Sign up for project updates on the project website.

[Minneapolismn.gov/government/projects/hennepin-ave-s/](https://www.minneapolismn.gov/government/projects/hennepin-ave-s/)



### CONTACT US

Adam Hayow, Project Engineer - Public Works  
 ☎ 612-673-2172 ✉ adam.hayow@minneapolismn.gov

# Hennepin Ave S Reconstruction Project

( W 26th St. to Douglas Ave)

## Construction & Traffic Impact Update

April 21 – 27, 2024



Page 2

**Construction work:** — Xcel Energy Duct Bank

Partial Intersection Restriction

**Traffic impact:** Lane Closures

Travel Lanes



### WHAT'S HAPPENING

#### 26th St to Douglas Ave

- The City Roadway construction has begun. This work includes pavement removals, clearing activities and preparations for the deep sanitary sewer replacement work.
- Utility work on Phase 1B will continue north of Franklin. Both CenterPoint Energy and Xcel Energy will be installing new gas mains, concrete duct banks, and manholes.



### WHAT TO EXPECT

#### 26th St to Douglas Ave

- Roadway & Utility work using heavy equipment will increase noise, vibration, and dust in work areas and sidewalks.
- Vehicle traffic will reduce travel lanes down to 1-lane in both directions during non-rush hours. Depending on the block's construction activity.
- Cross streets will at times be reduced to 1-lane.
- Parking lanes will be closed at certain locations on side locations.
- Business access will remain open during the construction.
- Pedestrian detours will be set up as needed. Greater impacts can be expected at intersections where work is occurring.
- Metro Transit buses will be detoured over to Lyndale Ave. via Lake St or 31st. St. and 24th St.



### STAY CONNECTED

#### Visit the project website

Sign up for project updates on the project website.

[Minneapolismn.gov/government/projects/hennepin-ave-s/](https://www.minneapolismn.gov/government/projects/hennepin-ave-s/)



### CONTACT US

**Adam Hayow, Project Engineer - Public Works**

📞 612-673-2172 ✉️ adam.hayow@minneapolismn.gov

# Hennepin Ave S Reconstruction Project

(W Lake St. to Douglas Ave.)

## Block-by-Block Work Summary

April 21 – 27, 2024

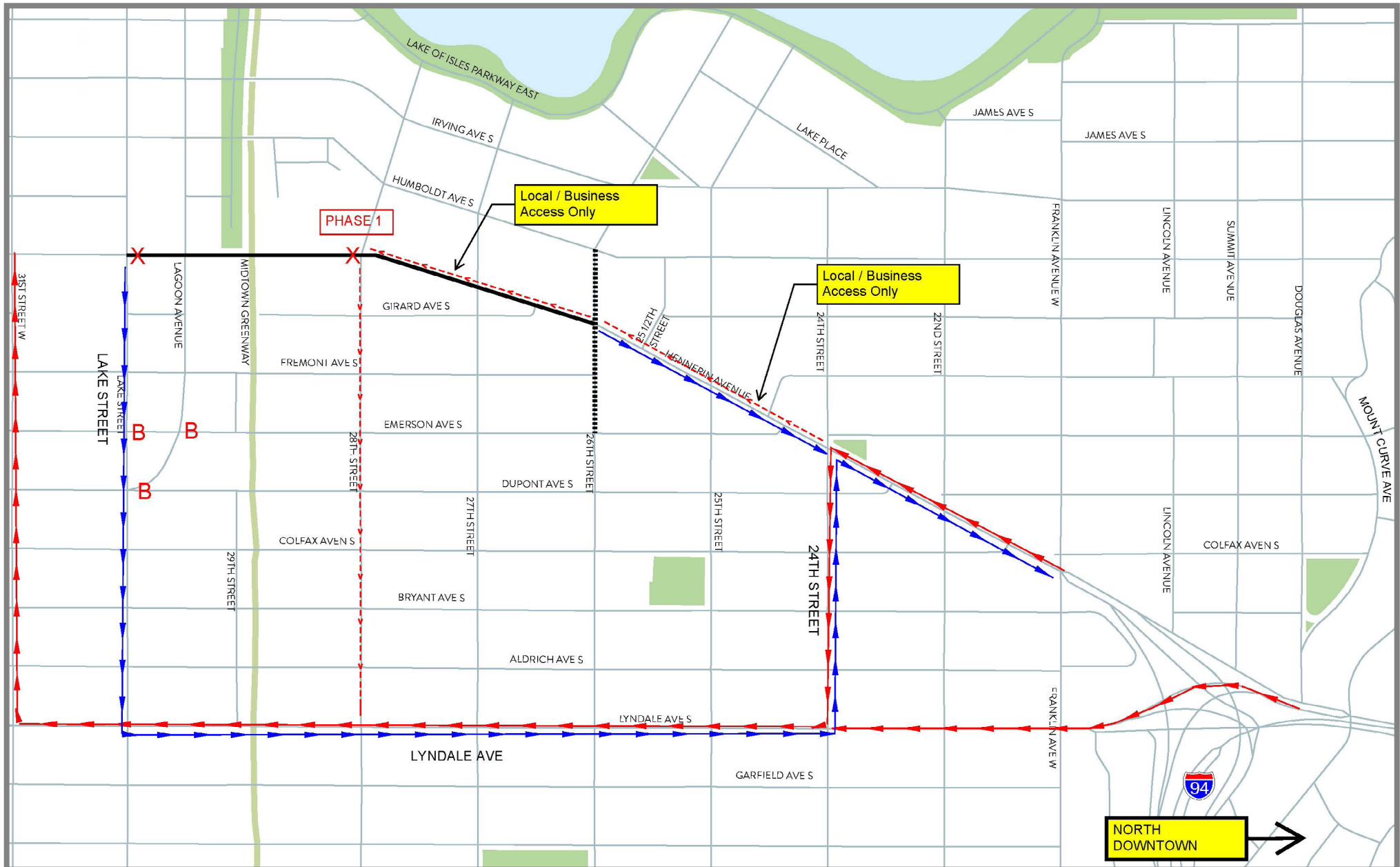


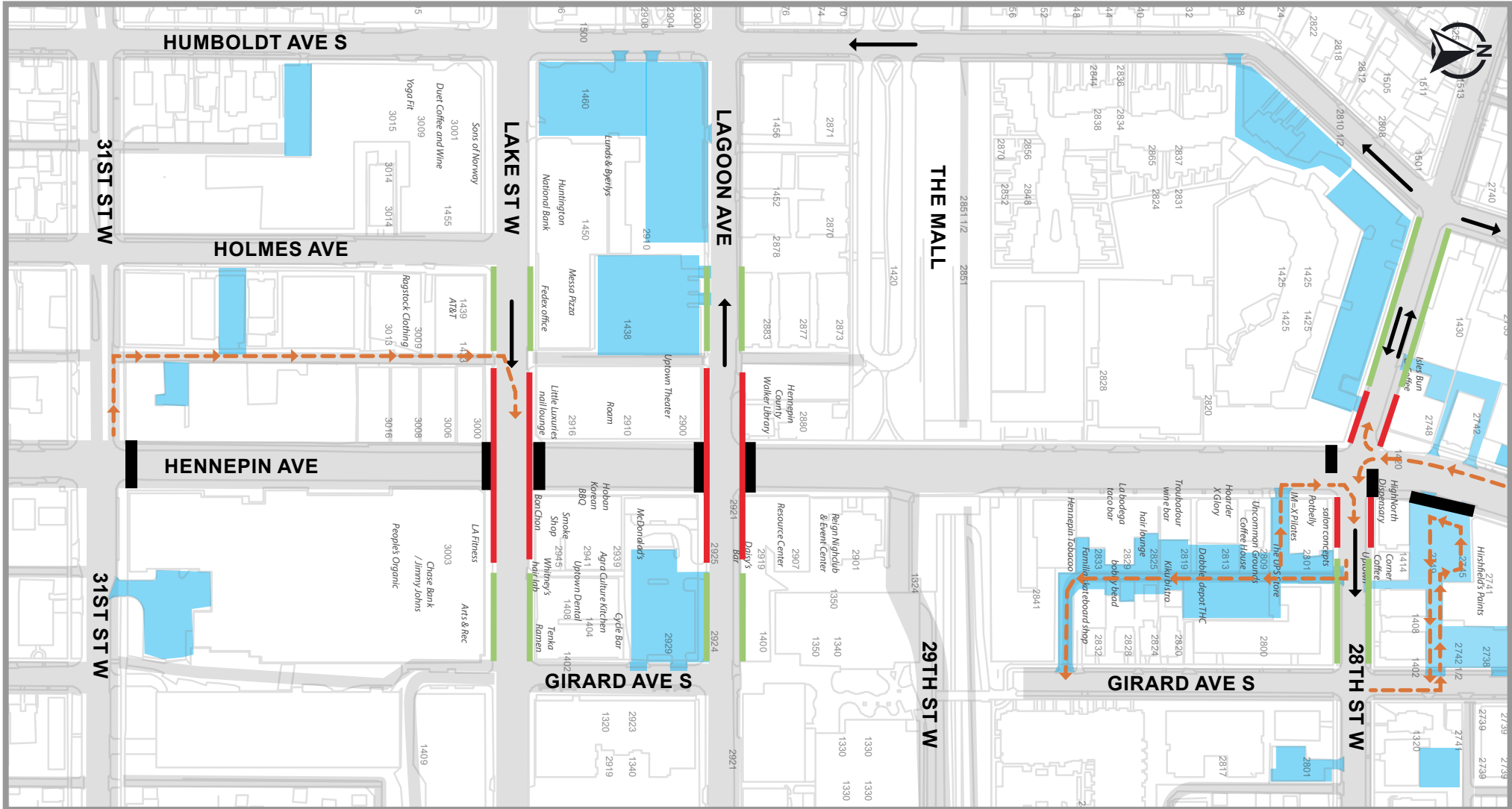
STREET BLOCK	PROJECT RELATED WORK	ANTICIPATED ROAD/PEDESTRIAN RESTRICTIONS				NOTES
		TEMPORARY PED RAMPS	PARKING RESTRICTIONS	TWO LANES OPEN (5-9 AM + 3-7 PM)	ONE LANE OPEN	
Lake St. Intersection	Sanitary Sewer Replacement	X	X		X	Hennepin is closed from 31st to Lake St, Business access open South of Lake St.
Lake St. - Lagoon Ave	Sanitary Sewer Replacement	ROAD CLOSED				
Lagoon Ave Intersection	Pavement removals	X	X		X	
Lagoon Ave -28th St.	Pavement and Rail Removals	ROAD CLOSED				
28th St. Intersection	Pavement and Rail Removals	X	X		X	
28th St. - 27th St.	Pavement and Rail Removals	X	X		X	Business access lane open Southbound from 26th to 28th
27th St. Intersection	Pavement and Rail Removals	X	X		X	Business access lane open Southbound from 26th to 28th. Intersection closed east of Hennepin.
27th St - 26th St.	Pavement removals	X	X		X	Business access lane open Southbound from 26th to 28th
26th St. Intersection						
26th St. -25th St.						
25th St. Intersection						
25th St - 24th St.						
24th St. Intersection						
24th St. - 22nd St.						
22nd St. Intersection						
22nd St. - Franklin Ave.						
Franklin Ave. Intersection						
Franklin Ave -Lincoln Ave.						
Lincoln Ave. Intersection	Xcel Energy Utility work	X	X		X	
Lincoln Ave. - Summit Ave.	Xcel Energy Utility work	X	X		X	
Summit Ave. Intersection	Xcel Energy Utility work	X	X		X	
Summit Ave. - Douglas Ave.	Xcel Energy Utility work	X	X		X	
Douglas Ave. Intersection	Xcel Energy Utility work	X	X		X	
Douglas Ave.	Xcel Energy Utility work	X	X		X	

# Hennepin Ave S Reconstruction Project

(W Lake St. to Douglas Ave.)

24th St. Detour  
April 21 – 27, 2024





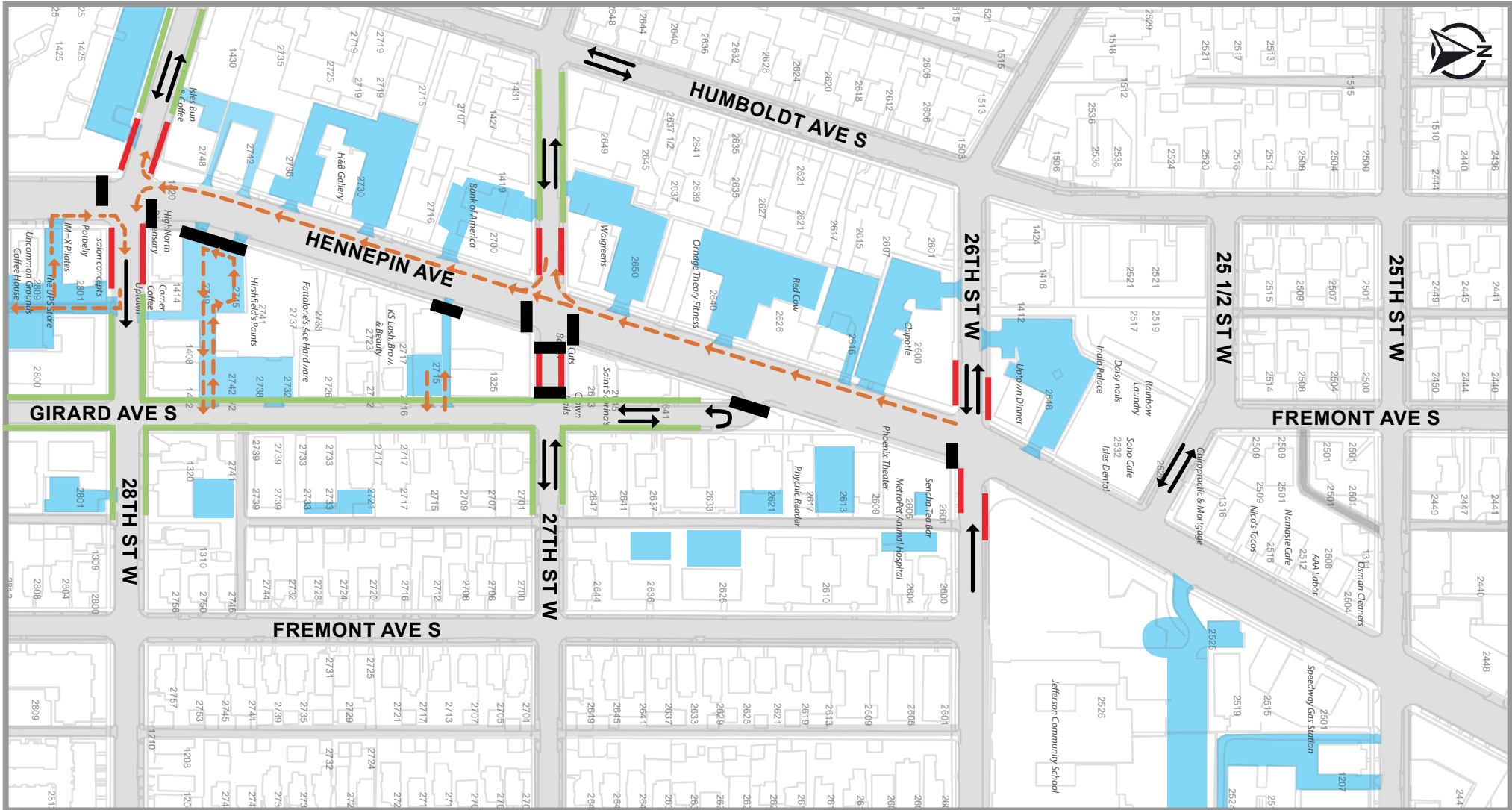
Private/Business parking

No Parking

Onstreet Parking

Road closed

Business Access Route



- Private/Business parking
- No Parking
- Onstreet Parking
- Road closed
- Business Access Route