

Collection Point

A Public Art Proposal for
The new East Side Storage & Maintenance Facility
By Randy Walker, Artist

Collections



An Evolving and Expanding Mosaic

The Holland Neighborhood sits at and serves as the heart of Northeast and its Arts District. Hollanders consistently express strong affection and pride for the rich collection of people, institutions, businesses, families, and creativity that combine to form and constantly reform the mosaic of their community. It is the unique flavor of this ever-changing blend that sets Holland apart from other Northeast neighborhoods.

Holland welcomes all contributors - old and new - to take part in the creation and evolution of community. Historically Holland has been home to European immigrants and their descendants. During the 1990s and 2000s, Holland attracted artists and creative individuals searching for a homestead in proximity to Northeast's many studio warehouses. While some parts of Northeast saw housing prices that rival other more affluent parts of the City, Holland maintained its affordability. In recent years, that affordability has led many new Americans from Central/South America and East Africa to settle in Holland, now calling it home. Holland is now younger and more diverse than much of the rest of the City - providing energy and vitality that sets the stage for an exciting present and future.

In addition to its vibrant population, Holland has become home to an ever-expanding community of local, innovative, creative, small businesses such as Sen Yai Sen Lek, the Northeast Investment Cooperative, Language Central, and ArtShare NE. These newcomers add depth to the established institutional community that is anchored by such beloved stalwarts as Edison High School, the Northeast Library, St. Clement's Catholic Church, Grumpy's NE, and business/property owners like Jim Higgins Insurance and Good Carma.

Holland is committed to balancing maintaining the stories and substance of its past with a welcoming and progressive approach to future growth and evolution. As the community moves through the next decade, Holland aspires to continue its tradition of being welcoming, locally-minded, yet globally-aware.



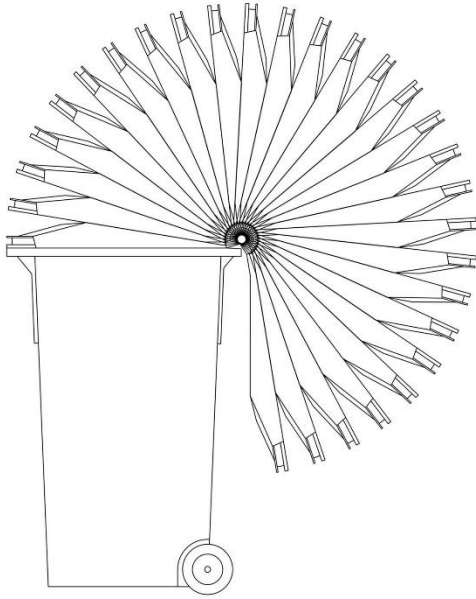


Minneapolis Recycles



Collection Point

inspiration



Each morning before sunrise, fleets of trucks will disperse from the new East Side Storage and Maintenance Facility and spread throughout Minneapolis to collect the remnants of our daily lives for disposal, recycling, or composting. The operation is a precisely choreographed dance of equipment and people that is huge in scale must be seamlessly coordinated. One measure of this essential service's success is how little thought we give it. We go to the alley, open our lids to fill our bins knowing that they will be reliably emptied again. It is a kind of never-ending ritual, all across the city: lids are being opened and closed at different times by the hands of residents, business owners, and public works employees, in a perpetual cycle of filling and emptying. These lids, in one sweeping motion, pass through an infinite range of possibility.



Collection Point

community engagement



The artist worked with City staff, the Art Steering Committee, and Northeast organizations to develop a series of community engagement activities in which participants were asked to respond to open-ended prompts that challenged them to think about life in Northeast Minneapolis. Borrowing graphic design elements from the City's street sweeping notices, the prompts were translated into Somali and Spanish. Portions of the images and text will be incorporated into the artwork.

PUBLIC ART ALERT!

**when I look
out my window**

I SEE:



City of Minneapolis Art in Public Places
www.minneapolismn.gov/dca/WCMSP-200258

¡ALERTA DE ARTE PÚBLICO!

MI CASA

se ve así:

*Esta tan Bonito con
Dos arboles .edc.*




Municipalidad de Minneapolis, arte en lugares públicos
www.minneapolismn.gov/dca/WCMSP-200258

PUBLIC ART ALERT!

**my
HOME**

Study Area

looks like:



City of Minneapolis Art in Public Places
www.minneapolismn.gov/dca/WCMSP-200258

¡ALERTA DE ARTE PÚBLICO!

**UNA
CIUDAD**

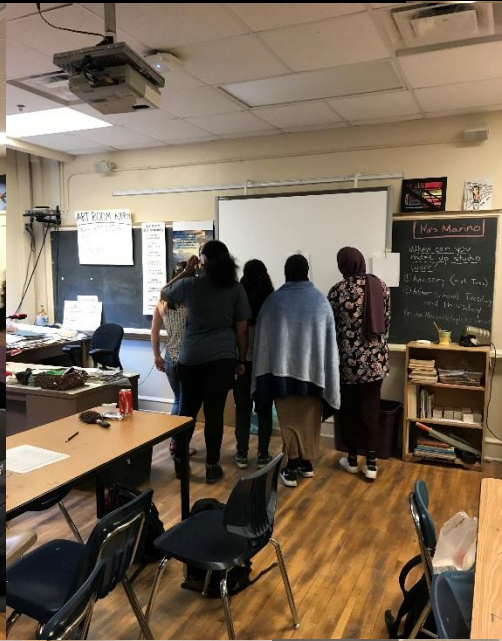
es:

*formas, sonidos, vistas,
gente, calles,
edificios, parques, árboles...*

*Es la conformación de su estructura
arquitectónica complementada con los
valores humanos de sus habitantes y
para vivir en armonía se debe respetar
y hacer observar esa comunión con
la naturaleza, en conclusión todo esta
relacionado...*

Municipalidad de Minneapolis, arte en lugares públicos
www.minneapolismn.gov/dca/WCMSP-200258

edison high school

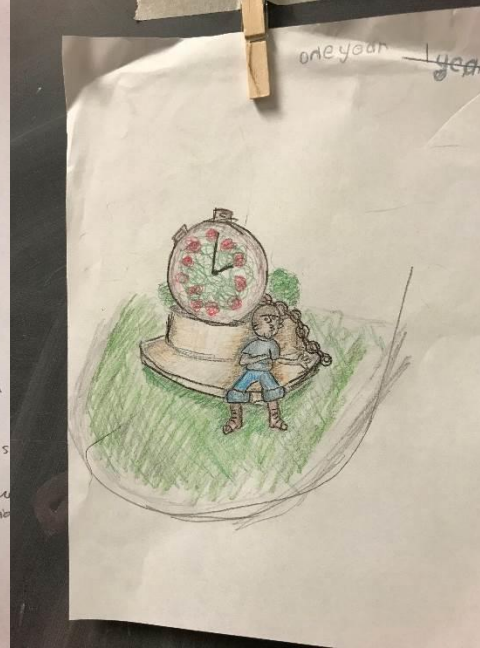
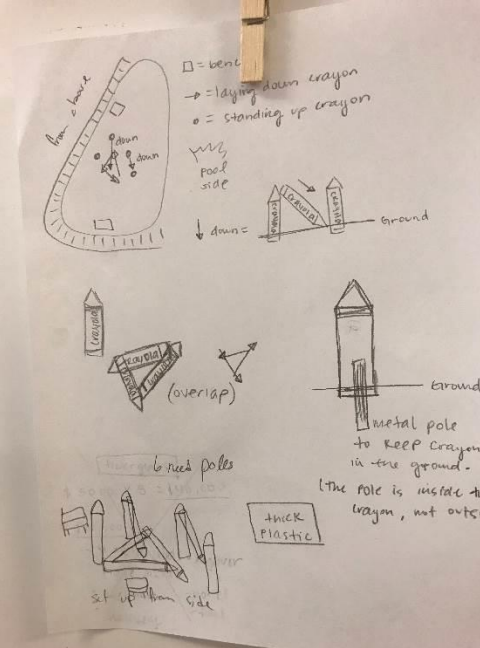


Theme/concept/visual illustration
 Freya, Alexis, Fardiana
 Crayons stacked on each other in abstract kind of way, multiple colors to bring attention to the piece. Safe for kids to play on. On the side there is going to be a bench. The bench is going to have a crayon wrapper wrapped around it. So it is enjoyable for kids and the elders.

Materials/production
 - Plastic
 - Paint / wood paint
 - Bench (wooden) sand
 - metal pole

Budget
 50,000

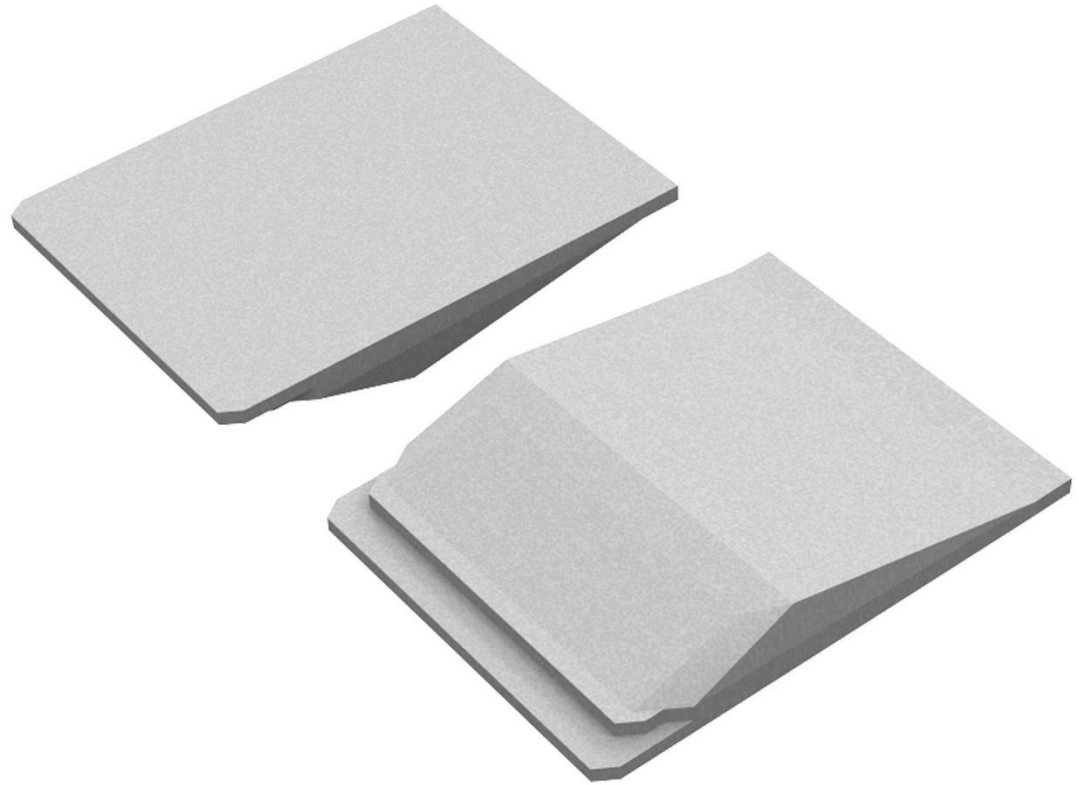
Project timetable
 2-3 months



Budget:
 Artist+Fee: 7500 15%
 25,000 for thick Plastic materials
 4 Gallons of Paint: 200
 Wood bench: 100 x 2
 Metal Poles: 80 x 6

Collection Point

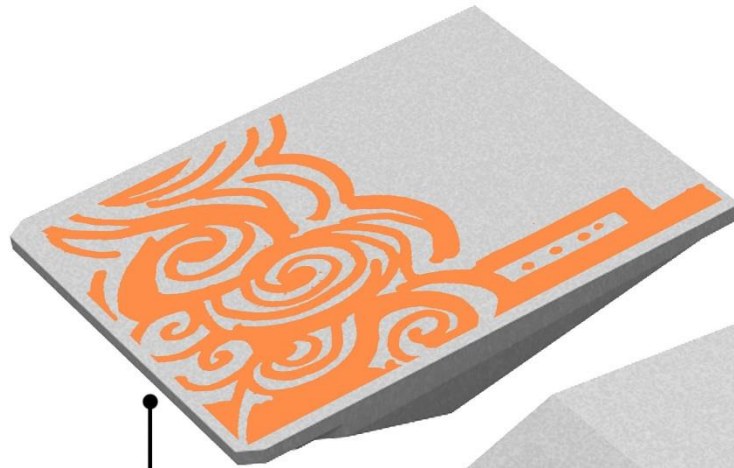
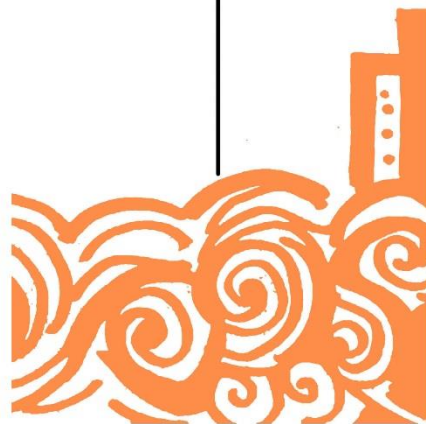
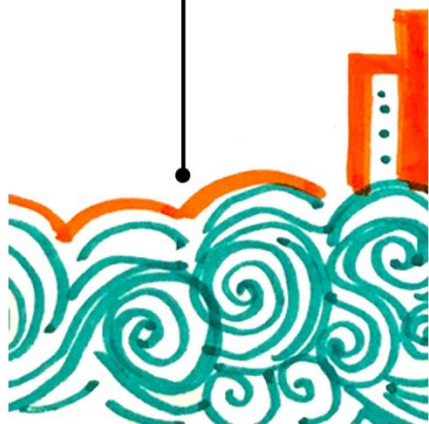
transformation



Using the lids of standard city-issued recycling container lids as forms, concrete poured to create inverse solid forms. The resulting forms are about looking and using the familiar things that surround us in new ways. The process of using the lids as formwork for art will transform them from void to solid and mirror the process of filling of the containers themselves. Concrete will be permanent and solid, however, and will echo the precast panels of the new maintenance facility building. The art panels will also celebrate material that is tested, mixed and poured by Public Works every day.

Collection Point

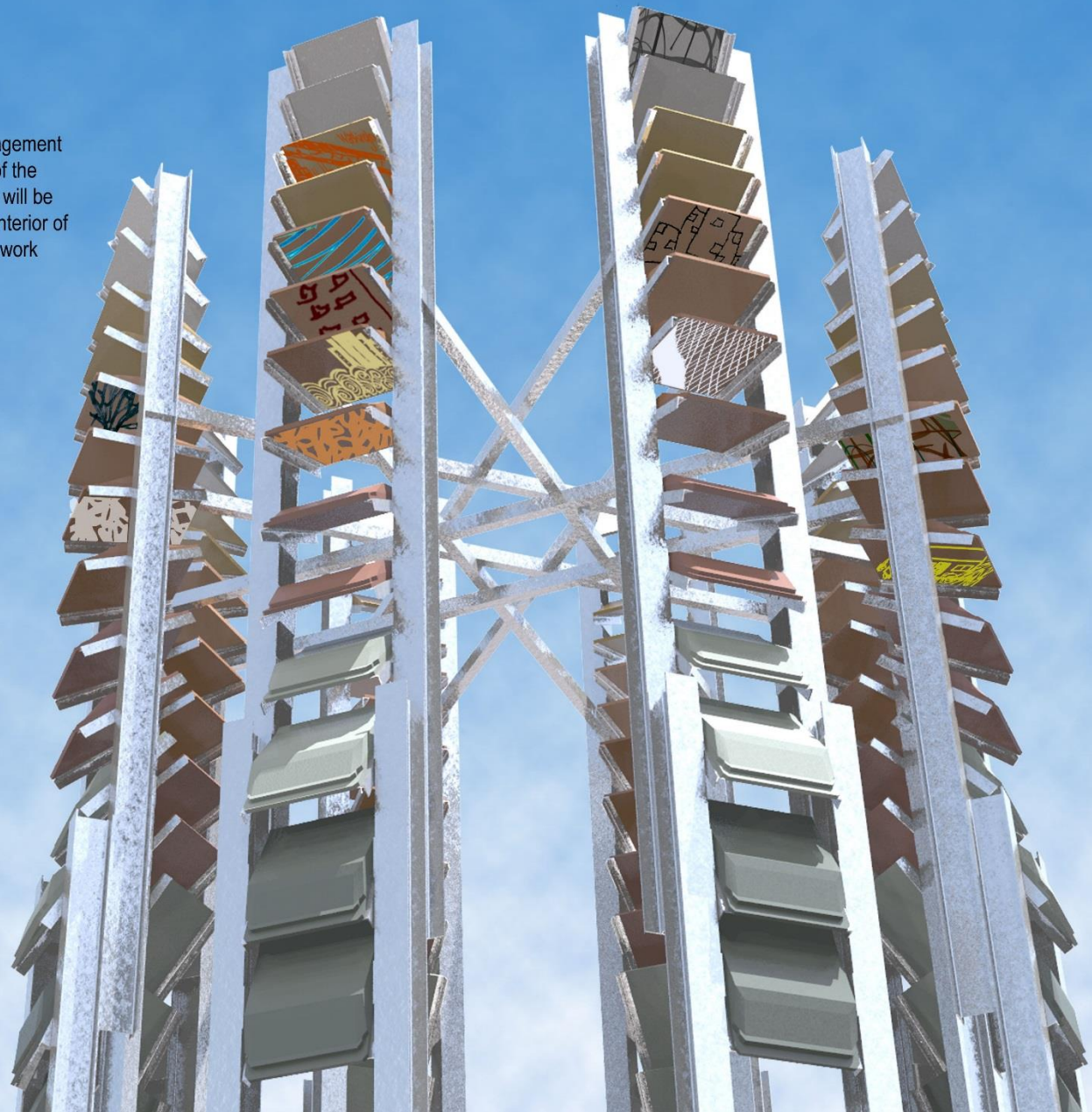
imagery



Imagery from taken community engagement drawings will be selected, enlarged, and transferred to the flip side of the pre-cast concrete lid panels with masonry paint.

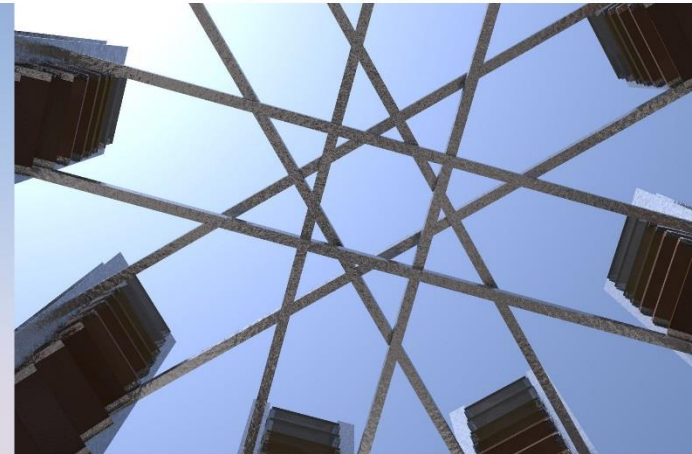
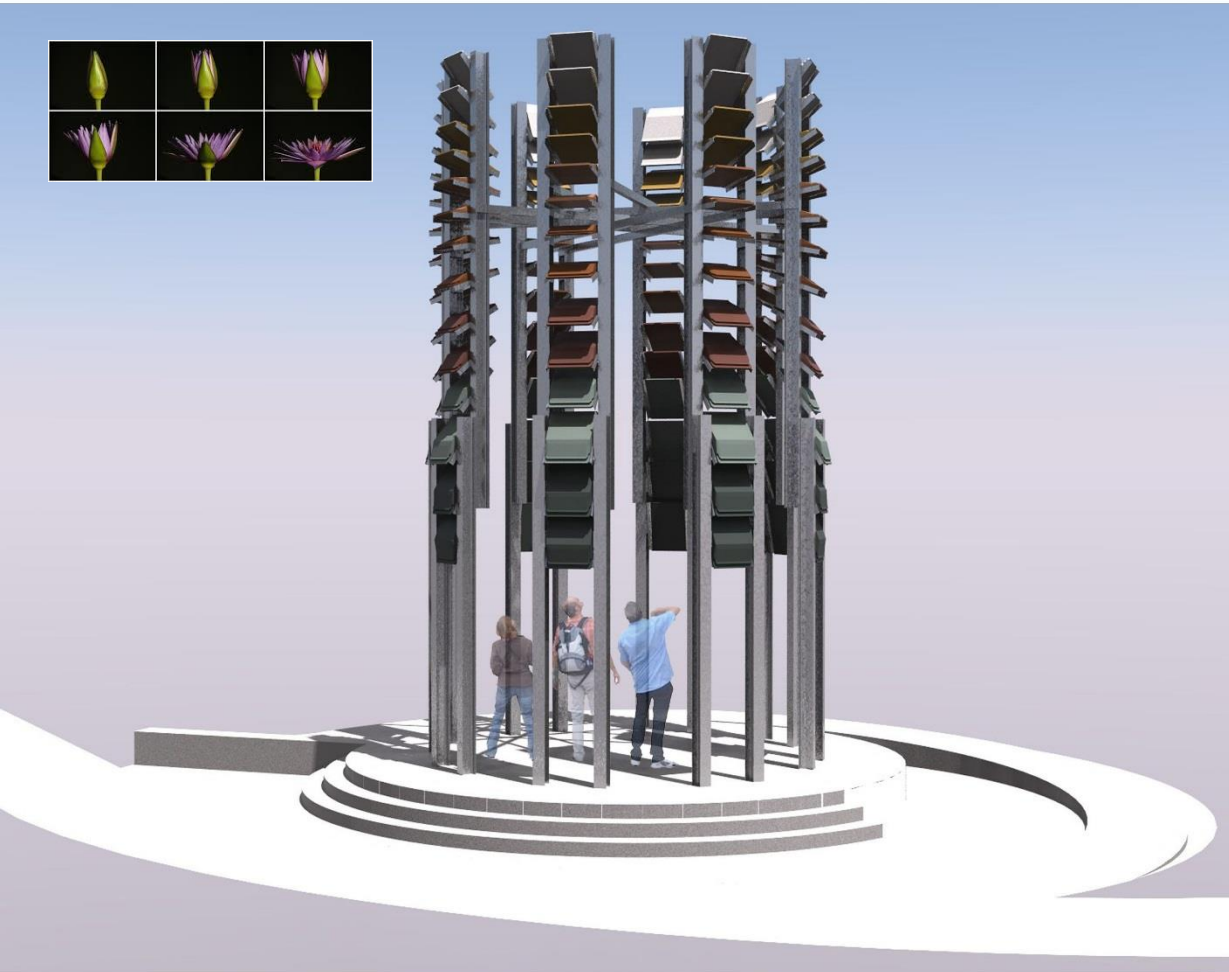
Collection Point

Selected images collected from community engagement events will be reproduced on the flat underside of the precast concreted lids. The abstracted markings will be visible in varying degrees from the exterior and interior of the artwork and offer an invitation to explore the work from different vantage points.



Collection Point

gathering space & gateway



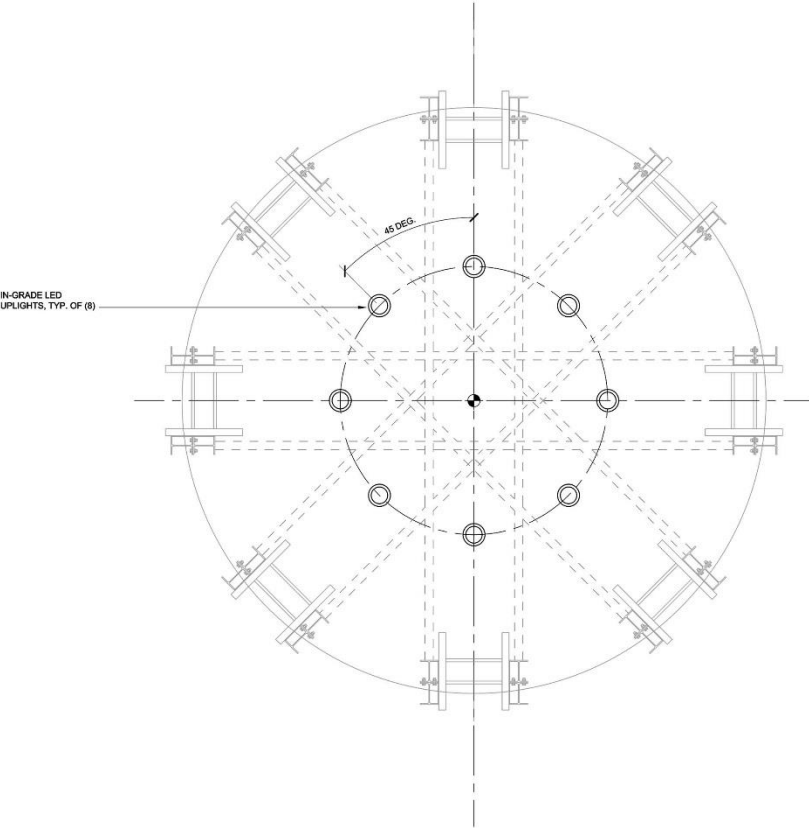
views looking up (top) and from within (below)



The artwork is conceived a transparent space that can be entered, frames its surroundings, and ultimately offers a memorable place to meet, converse, and wonder. The artwork will be created by transforming common forms and materials found in the new East Side Maintenance Facility into an unlikely arrangement that reveals their expressive potential.

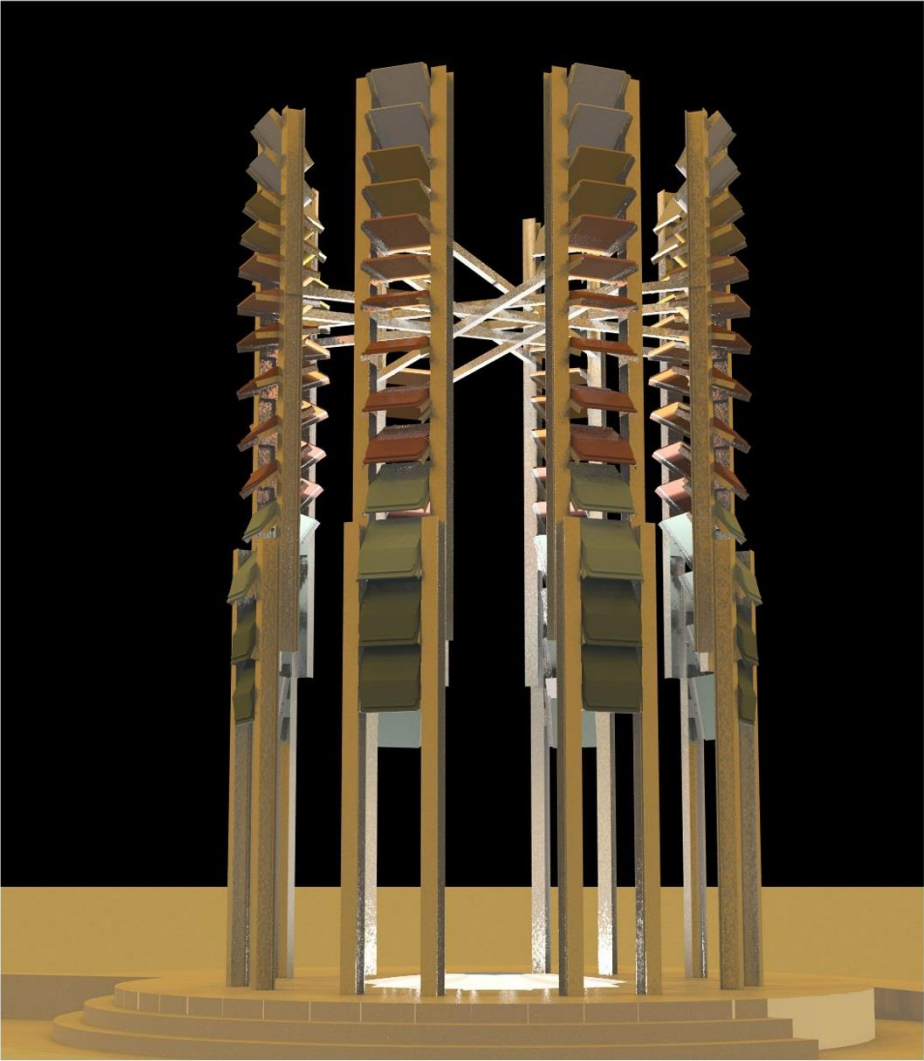
Collection Point

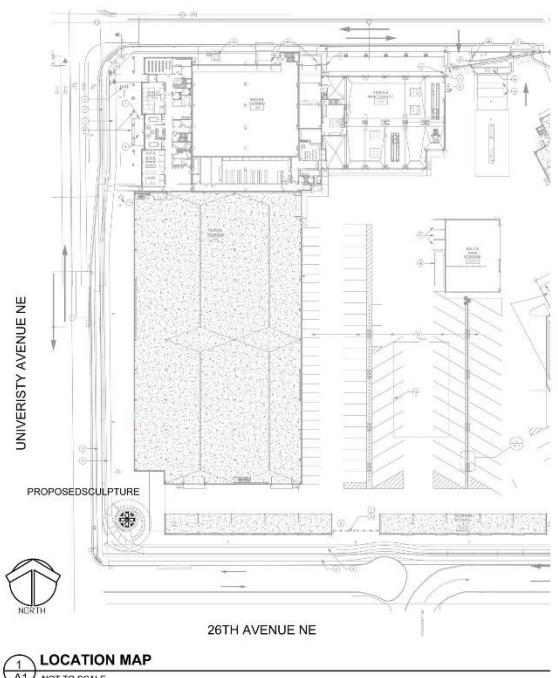
beacon



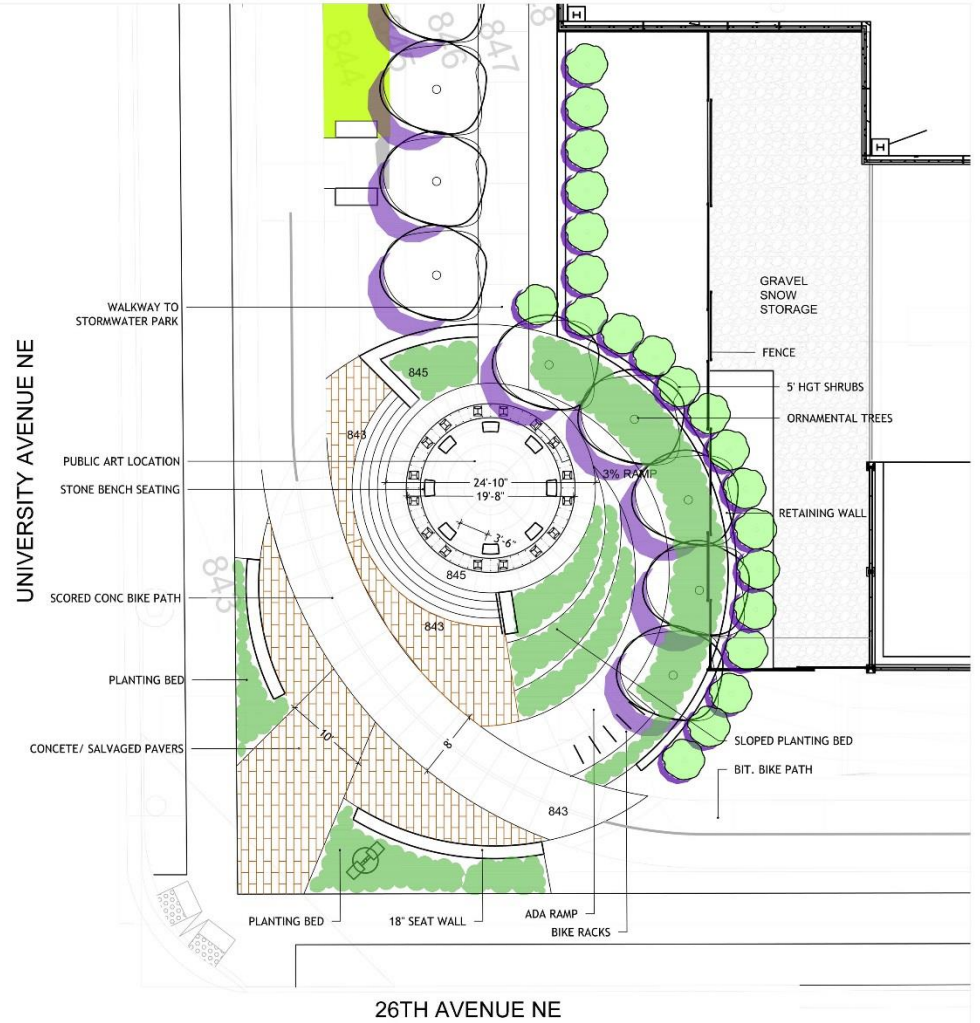
SCULPTURE LIGHTING PLAN

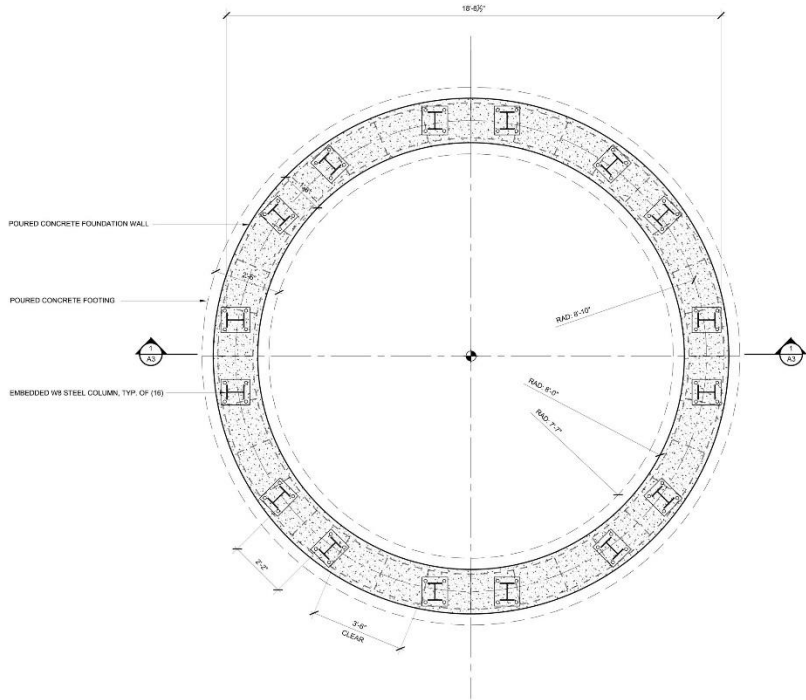
SCALE: 1/2" = 1'-0"





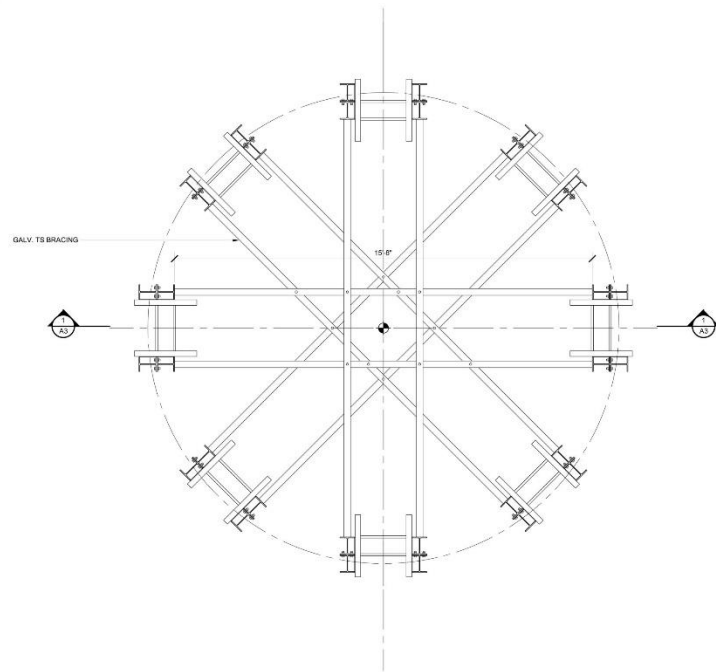
PRELIMINARY - NOT FOR CONSTRUCTION



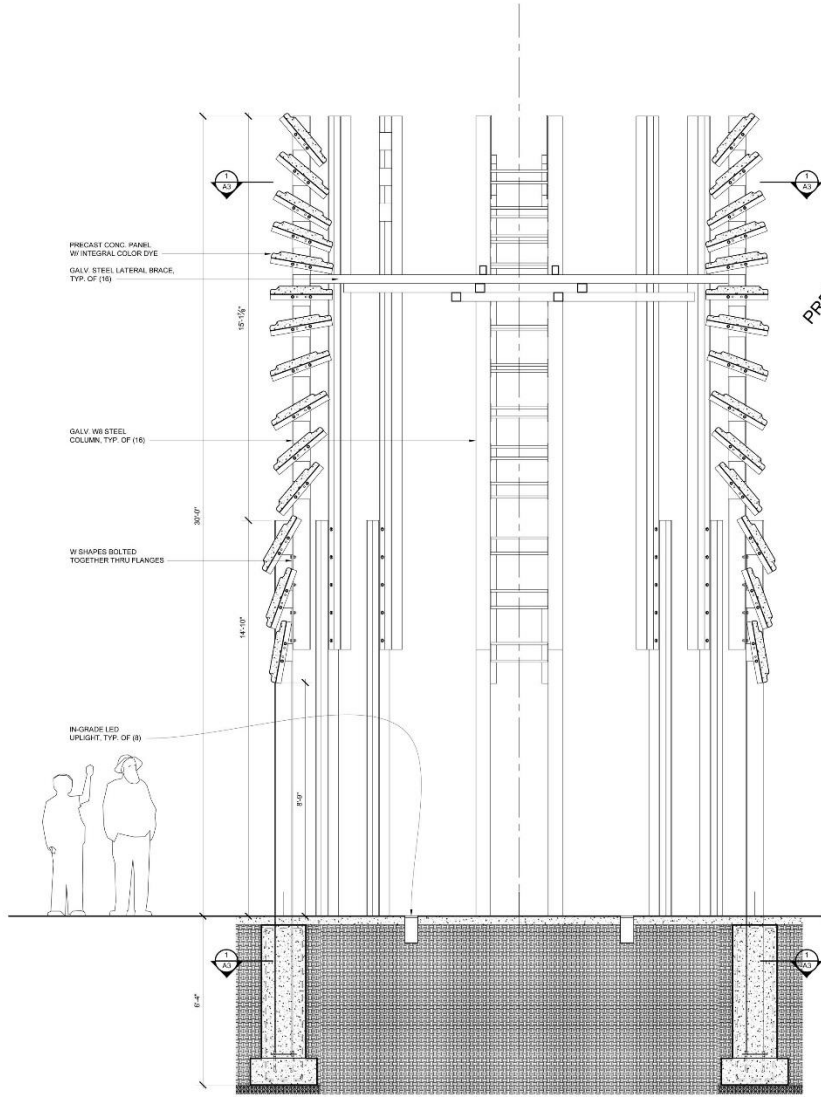


1 SCULPTURE FOUNDATION PLAN
SCALE: 1/2" = 1'-0"

PRELIMINARY - NOT FOR CONSTRUCTION

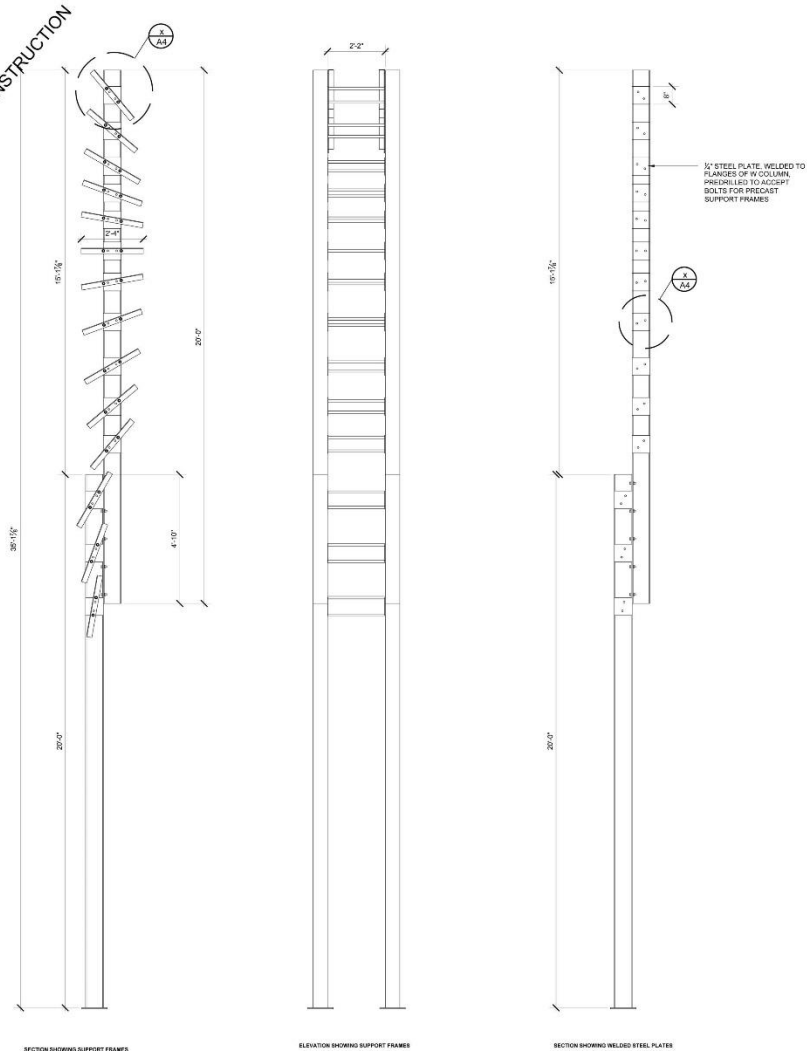


2 SCULPTURE PLAN
SCALE: 1/2" = 1'-0"

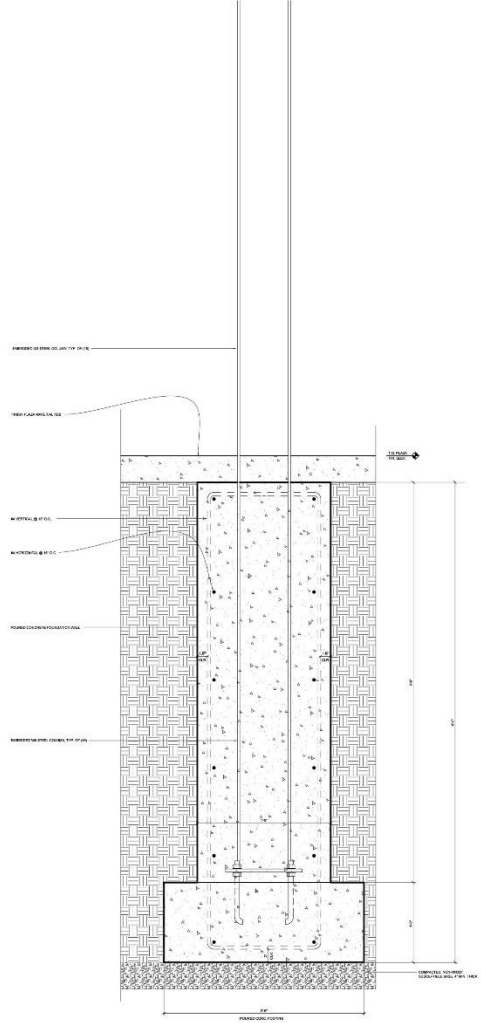


A2 SCHEMATIC SCULPTURE SECTION
SCALE: 1/2" = 1'-0"

PRELIMINARY - NOT FOR CONSTRUCTION

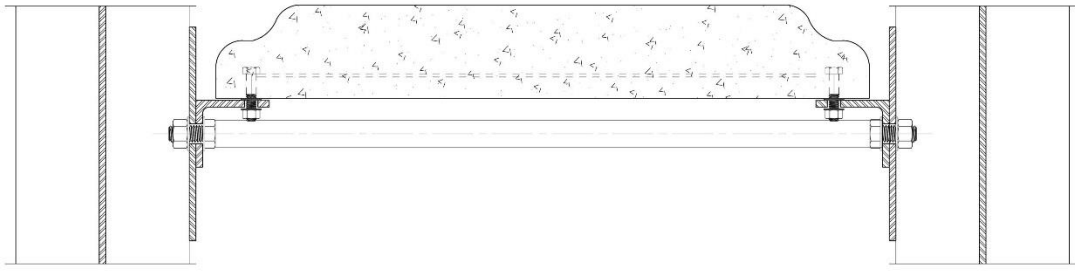


A3 TYPICAL FRAME CONSTRUCTION
SCALE: 1/2" = 1'-0"

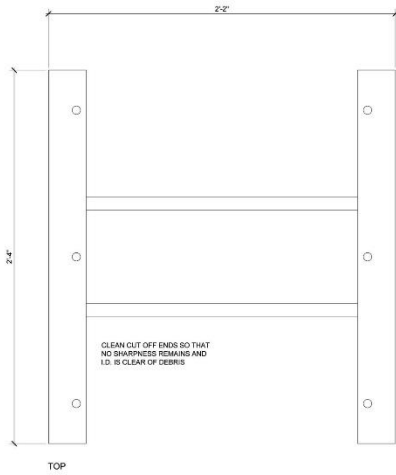


1
A5 SCULPTURE FOUNDATION DETAIL
SCALE: 3" = 1'-0"

PRELIMINARY - NOT FOR CONSTRUCTION

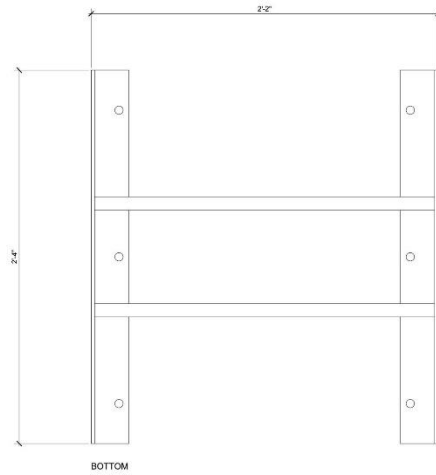


1
A4
PRECAST PANEL DETAIL
SCALE: 6" = 1'-0"



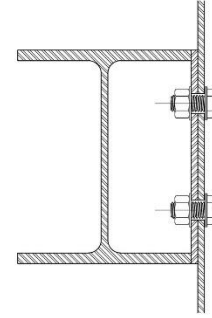
CLEAN CUT OFF ENDS SO THAT
NO SHARPNESS REMAINS AND
I.D. IS CLEAR OF DEBRIS

TOP



BOTTOM

3
A4
PRECAST PANEL SUPPORT FRAME
SCALE: 3" = 1'-0"



2
A4
PRECAST PANEL DETAIL
SCALE: 6" = 1'-0"

PRELIMINARY - NOT FOR CONSTRUCTION

