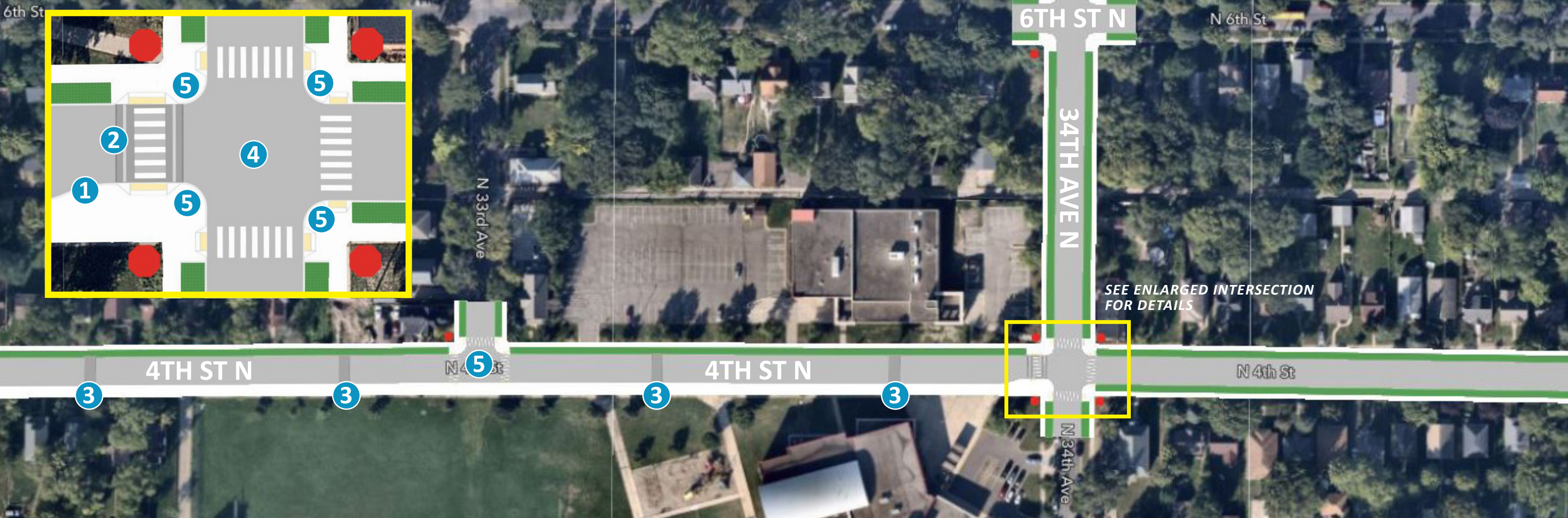
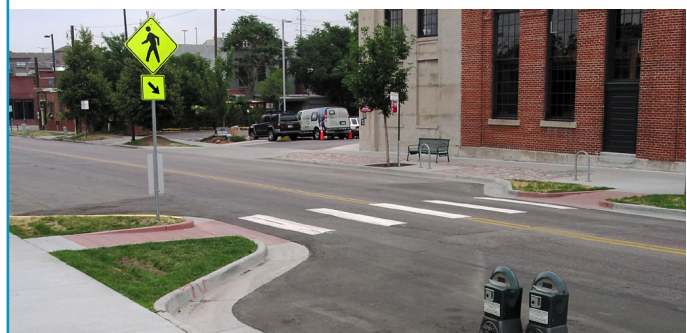


ENLARGED INTERSECTION



1 Intersection bumpout to encourage safe travel speeds and shorten crossing distances for pedestrians. Impacts to **parking** will be minimal to none.



3 Speed humps are designed help slow traffic speeds along the street. They have a more gentle slope than a traditional speed bump and are designed to encourage vehicle speeds of 20-25 MPH along neighborhood streets



2 Raised Crossing to slow vehicle traffic, provide safer pedestrian crossings with increased visibility, and a more comfortable, safe, and accessible crossing for pedestrians.



4 Designated as the **Primary Intersection** and the focus area of multiple traffic calming treatments. This intersection at **4th St N and 34th Ave N** will likely contain vertical speed control elements as well as pedestrian safety treatments.

5 Intersections where all corners will have upgraded **ADA compliant pedestrian curb ramps**. Pedestrian curb ramps allow pedestrians of all abilities to navigate the neighborhood independently and updating this infrastructure supports safer walking, biking, and rolling near Cityview school.



ADDITIONAL NOTES

4th Street North is designated as a Near-term Low Stress Bikeway in the Transportation Action Plan. Painted markings may appear on the street to remind cars to share the road with bikes. **No bike lanes** will be added.

Additional speed humps may be located along 4th St N between 34th Ave N and 35th Ave N. The addition of these will depend on a review of treatments located at the primary intersection (4th Ave N & 34th Ave N)

A traffic circle is a proven safety and traffic calming measure which would help reduce unsafe speeds along the corridor. With community support, a traffic circle could be installed at the intersection of **6th St N and 34th Ave N**.

