

# City Trees Catalog

Fall 2025





# Introduction

---

This catalog contains all of the trees available for the City Trees Green Zone and Commercial Canopy planting programs for fall 2025. It includes an overview of each one to help you pick out the best trees for your yard. From mature height to sunlight needs, you can find it in this catalog! Pictures of each tree, including the bark, leaves, flowers, and fruit are also included. We hope you love your new trees!



If you have any questions, please contact us:

[TreeHealth@minneapolismn.gov](mailto:TreeHealth@minneapolismn.gov)

612-673-2606



# Table of Contents

---

## Large Trees:

1-6

- **Bur Oak**
- **Northern Red Oak**
- **Swamp White Oak**
- **White Oak**
- **White Pine**
- **Yellow Birch**

## Medium Trees:

7-10

- **Blue Beech**
- **Ironwood**
- **White Cedar**
- **Yellowwood**

## Small Trees:

11-13

- **Black Cherry**
- **Pagoda Dogwood**
- **Redbud**

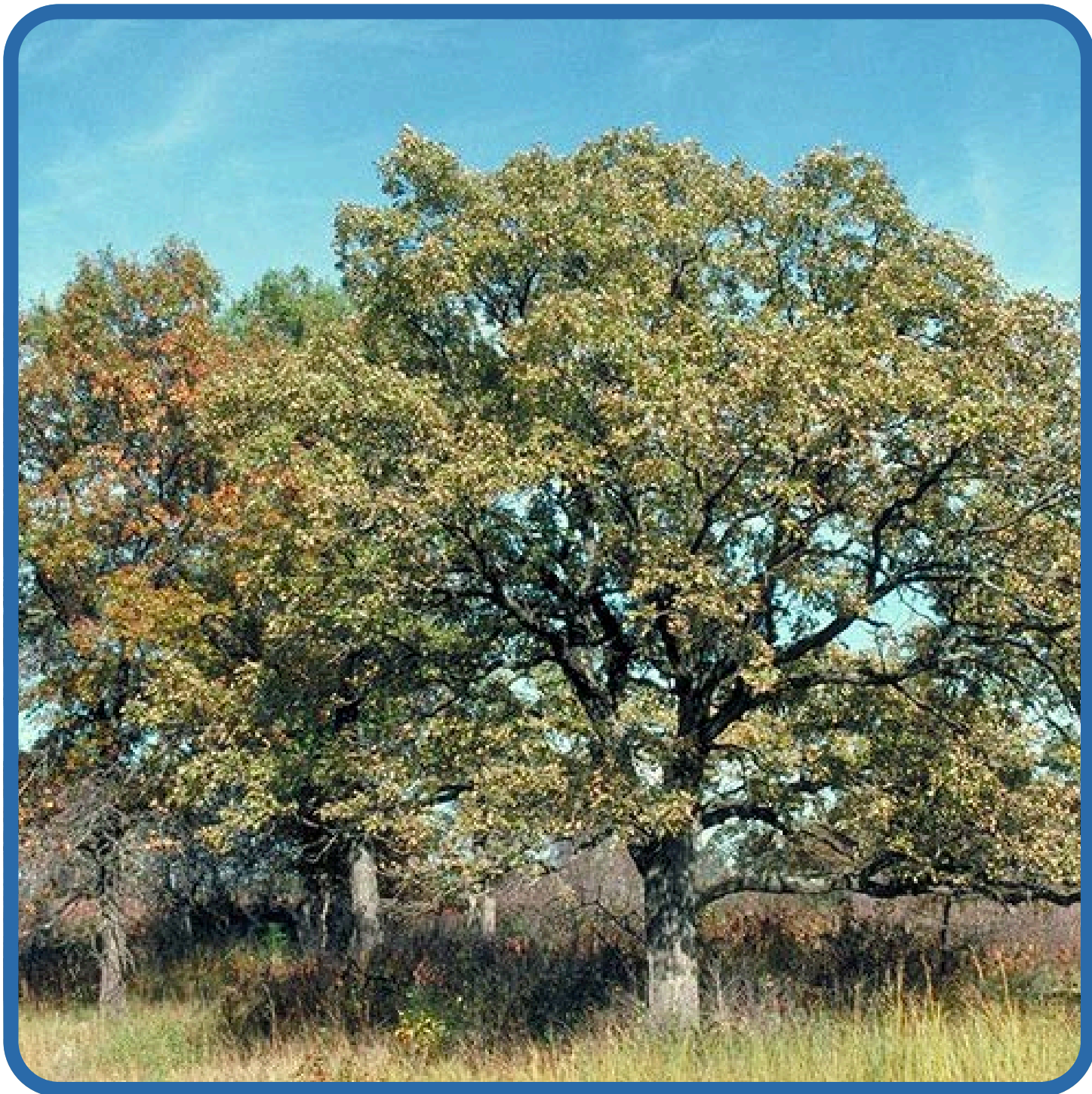
## Fruit Trees:

14-15

- **American Plum**
- **Serviceberry**

# Bur Oak

Bur Oak is one of the most common trees in Minnesota. It grows into a beautiful, wide-stretching tree great for shade, windbreak, and energy conservation. It also helps with reducing stormwater. It is very resilient to bugs and diseases.



Height	70 to 80 ft
Spread	40 to 80 ft
Growth rate	Slow to moderate
Sun	Full

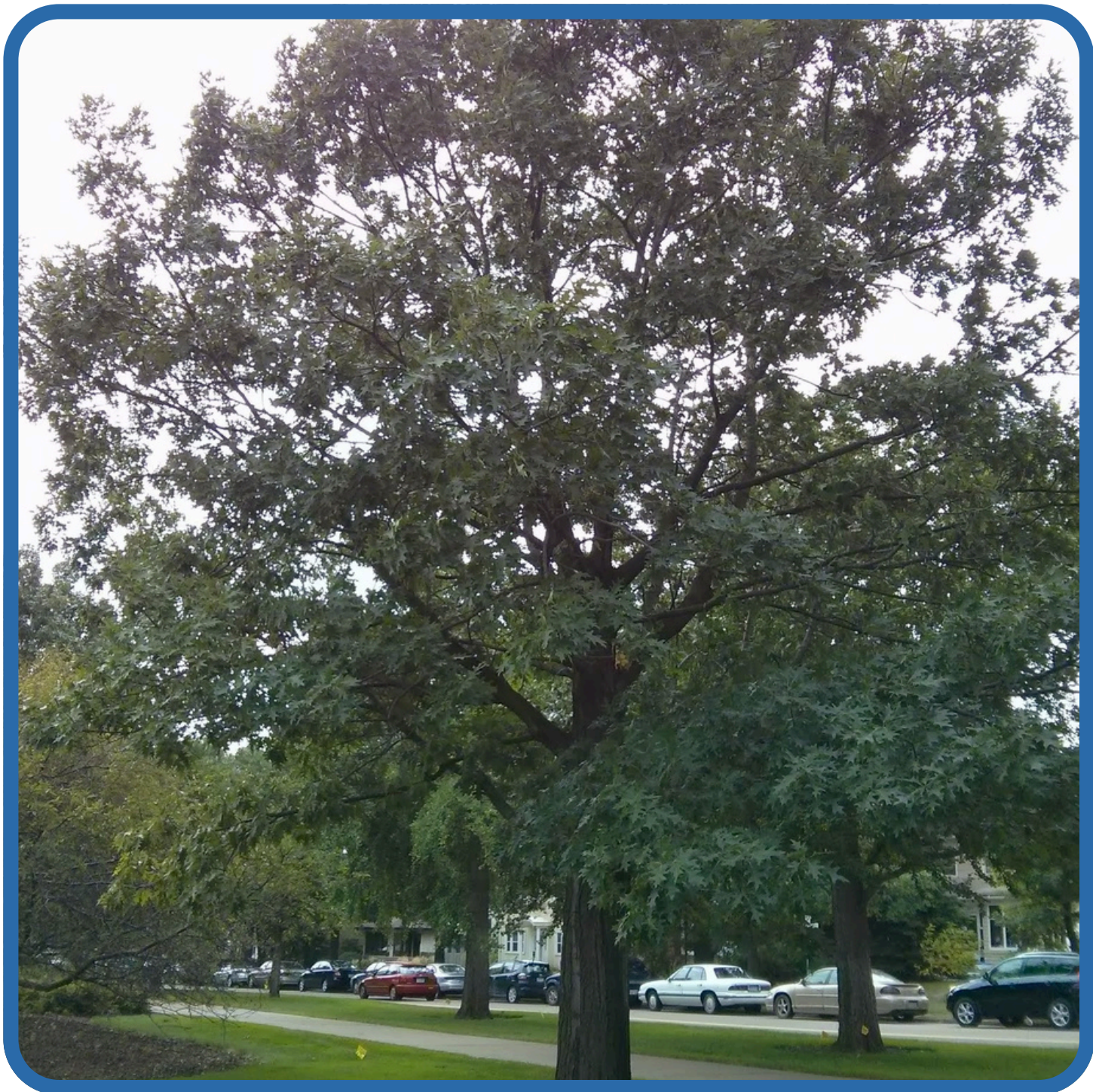
Soil	Well drained
Fall Color	Yellow/brown
Flowers	Drooping seed clusters
Native?	Yes





# Northern Red Oak

The Northern Red Oak is a tall, native tree with dark green leaves that turn bright red in the fall. It grows fast and can live in many types of soil. It can grow 60 to 75 feet tall, gives lots of shade, and it's acorns are food for many animals.



Height	60 to 75 ft
Spread	50 to 75 ft
Growth rate	Moderate to fast
Sun	Full

Soil	Moist, well drained
Fall Color	Red
Flowers	Drooping seed clusters
Native?	Yes





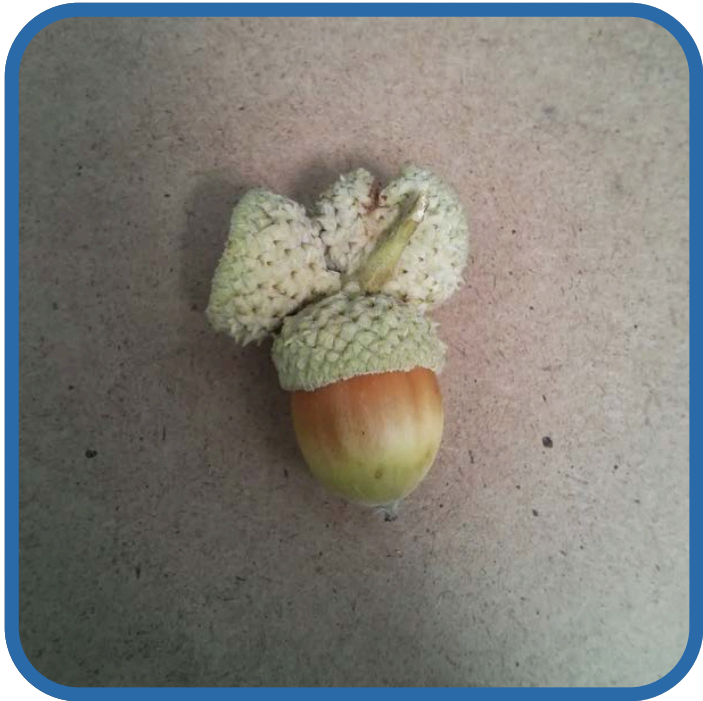
# Swamp White Oak

The Swamp White Oak is a strong tree with blue-green leaves that turn yellow in the fall. It grows well in wet or dry soil. It can reach 60 feet tall and gives good shade. It's acorns are food for many animals, providing wildlife benefits.



Height	60 ft
Spread	50 to 60 ft
Growth rate	Moderate
Sun	Full/partial

Soil	Wet
Fall Color	Orange/yellow
Flowers	Drooping seed clusters
Native?	Yes





# White Oak

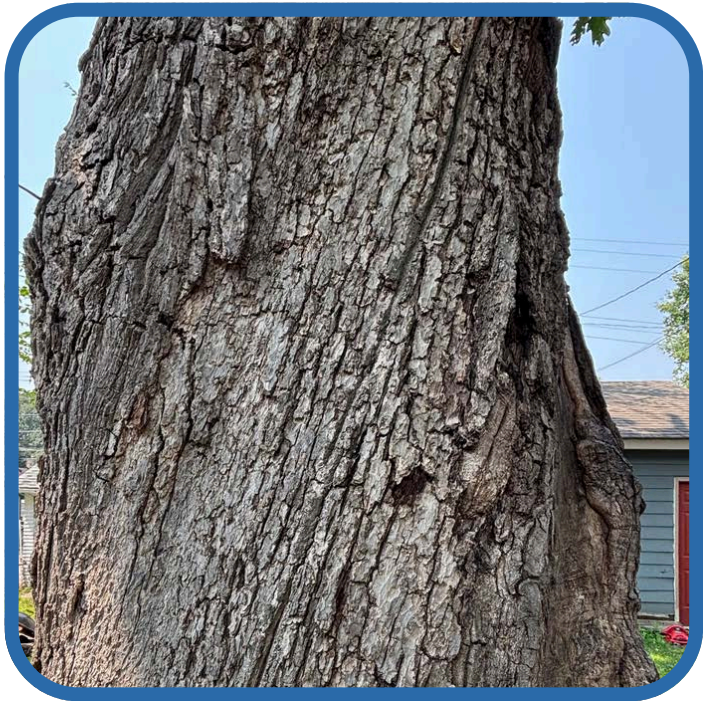
The White Oak is a very common tree to spot in Minnesota. It provides great shade and supports wildlife. In the fall, the leaves turn into a beautiful deep red color.

The tree only starts producing acorns after 20 years.



Height	50 to 80 ft
Spread	50 to 80 ft
Growth rate	Slow to moderate
Sun	Full

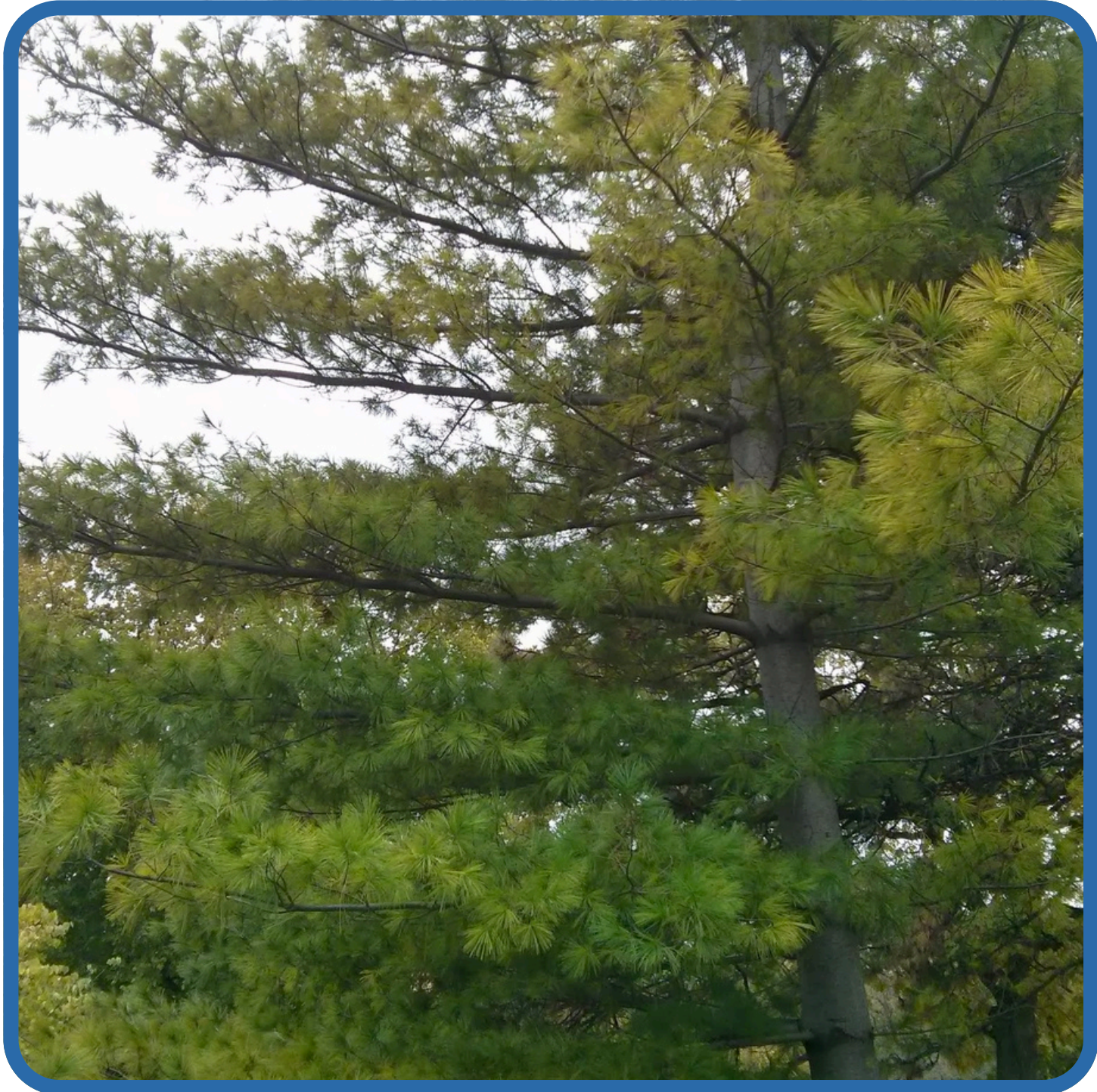
Soil	Moist, well drained
Fall Color	Red/brown
Flowers	Drooping seed cluster, acorns
Native?	Yes





# White Pine

The White Pine is a beautiful evergreen tree native to Minnesota. The trunk grows very straight, with branches stretching out in a circle pattern. It has long soft green-blue needles and pinecones. It is great for windbreak, shade, and provides greenery year-round.



Height	50 to 80 ft
Spread	20 to 40 ft
Growth rate	Fast to moderate
Sun	Full/partial

Soil	Moist, well drained
Fall Color	Green, no change
Flowers	Cones
Native?	Yes





# Yellow Birch

Yellow Birch gets its name from its yellow-ish peeling bark. It is one of the largest hardwood trees in North America. In the fall, the leaves turn into a vibrant yellow. It's a great shade tree and adapts well to different environments. It is also less susceptible to pests that affect other birch trees.



Height	60 to 75 ft
Spread	60 to 75 ft
Growth rate	Moderate
Sun	Full/partial

Soil	Moist, well drained
Fall Color	Bright yellow
Flowers	Drooping seed clusters, cones
Native?	Yes





# Blue Beech

The Blue Beech can be a great choice for a year-round landscape tree, especially in Minnesota. It is a small, slow-growing tree, and can survive in a variety of weather conditions, like short-term flooding and ice storms.



Height	20 to 35 ft
Spread	20 to 35 ft
Growth rate	Slow
Sun	Partial/full

Soil	Moist, well drained
Fall Color	Yellow/orange/red
Flowers	Drooping seed cluster
Native?	Yes





# Ironwood

The Ironwood is a tough understory tree with beautiful birch-like leaves and grayish-brown flaky bark. It is a slow-growing, resilient tree with a relatively small mature size, making it a good choice for yards and smaller spaces.



Height	20 to 40 ft
Spread	20 to 30 ft
Growth rate	Slow
Sun	Full/partial

Soil	Moist, well drained
Fall Color	Golden yellow
Flowers	Drooping clusters
Native?	Yes





# White Cedar

The White Cedar is a graceful evergreen tree with soft, flat green needles that stay vibrant year-round. This tree provides good shelter for wildlife and adds beauty to any landscape.



Height	30 to 40 ft
Spread	10 to 15 ft
Growth rate	Slow
Sun	Full/partial

Soil	Moist, well drained
Fall Color	Green, no change
Flowers	Cones
Native?	Yes





# Yellowwood

Yellowwood is a medium- to large-sized tree at 30 to 50 feet high. It has smooth bark, large hanging clusters of fragrant white flowers, and clear yellow fall color. This is a great tree for shade in yards. It isn't widely planted in Minnesota, but has excellent potential!



Height	30 to 50 ft
Spread	40 to 55 ft
Growth rate	Moderate
Sun	Full

Soil	Moist, well drained
Fall Color	Yellow
Flowers	White, large
Native?	No





# Black Cherry

The Black Cherry tree is a great ornamental fruit tree. In spring, white flowers bloom preparing for dark purple fruit in late summer. The cherries are edible if prepared properly. It provides shelter and food to small wildlife.



Height	20 to 30 ft
Spread	15 to 25 ft
Growth rate	Fast
Sun	Full/partial

Soil	Moist, well drained
Fall Color	Yellow/red
Flowers	White clusters
Native?	Yes





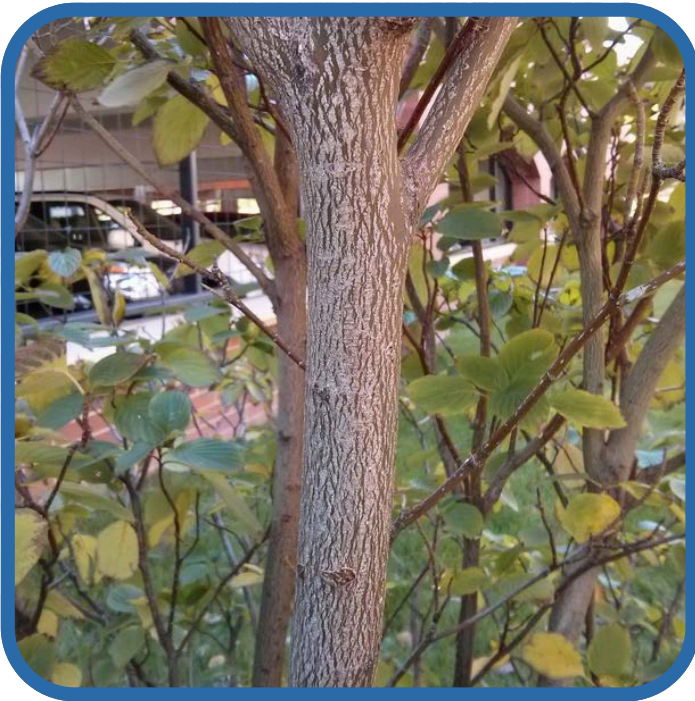
# Pagoda Dogwood

The Pagoda Dogwood is a shrub-like tree. In late spring, fragrant white (sometimes yellowish) flowers bloom. During summer, small blue-black berries develop. These berries are bitter but non-toxic and attract small wildlife. It is a great decorative tree.



Height	15 to 20 ft
Spread	20 to 30 ft
Growth rate	Moderate
Sun	Partial

Soil	Moist, well drained
Fall Color	Red
Flowers	White clusters
Native?	Yes





# Redbud

The Redbud is a small tree best known for its flowers. In early spring, stunning pink-magenta colored flowers bloom. Birds and other pollinators are attracted to the trees flowers.



Height	20 to 30 ft
Spread	25 to 35 ft
Growth rate	Fast
Sun	Full/partial

Soil	Moist, well drained
Fall Color	Yellow/red
Flowers	Pink/white
Native?	Yes





# American Plum

The American Plum is a small fruit tree. In the spring, pinkish white flowers bloom, and in late summer these turn into yellow and pink plums. It is a great ornamental tree. In the fall, the leaves turn into a yellow-orange color.



Height	15 to 25 ft
Spread	15 to 25 ft
Growth rate	Fast
Sun	Full/partial

Soil	Moist, deep
Fall Color	Yellow/orange
Flowers	White
Native?	Yes





# Serviceberry

The Serviceberry is a well-known, edible, small tree. It's also known as Juneberry or Shadbush. In spring, white flowers bloom. These flowers produce clusters of small dark purple berries mid summer. During fall, it's leaves change into vibrant yellow and red colors.



Height	15 to 30 ft
Spread	15 to 20 ft
Growth rate	Moderate
Sun	Full/partial

Soil	Moist, well drained
Fall Color	Red/orange
Flowers	White
Native?	Yes

