



# Cedar Lake Road Bridge Replacement

Project Overview  
March 2024

# Agenda

- Project History
- Temporary Closure/Reopening
- Current Status
- Engagement Update
- Project Considerations
- Proposed Improvements
- Railing & Lighting



Project Location



# Project History



- Project starts: initially programmed for 2023 construction
- Concept development work
- Fall: virtual public engagement
- Spring: budget constraints and construction cost inflation on other projects put this project on hold
- April: structural issues identified during a routine inspection; temporary closure for vehicular traffic
- September: repairs implemented to temporarily reopen the bridge with weight limits



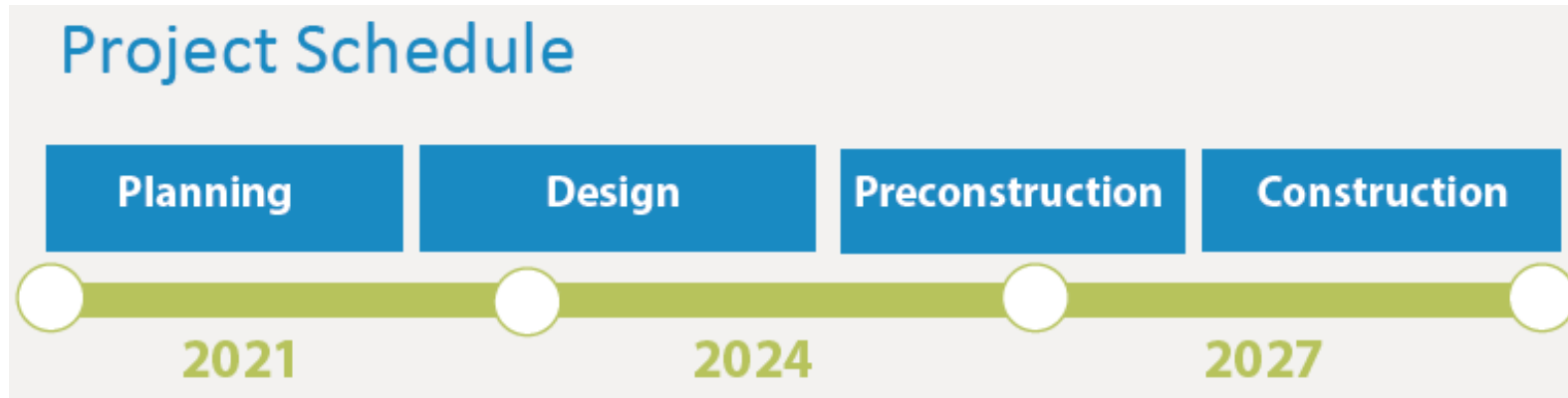
# Temporary Closure/Reopening



Interim solution highlights the crucial need for a full replacement to ensure sustained functionality and safety



# Current Status



- Construction 2027
- City pursuing federal grant funding that may push up timeline
  - Planning & Engineering process to be “shovel ready” by summer 2025



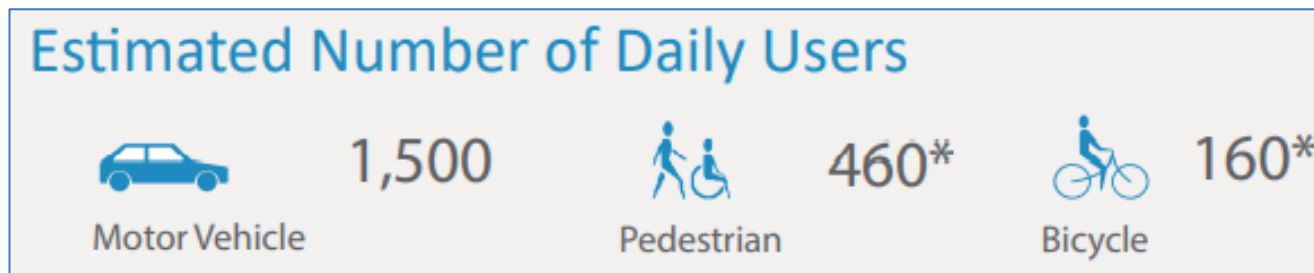
# Engagement Update

- Early March: Neighborhood Association Meetings
- Tabling near Bridge
- **Open House**
  - Thursday, April 11
  - 4:30 - 6:30 PM
  - Bryn Mawr Presbyterian Church
  - 420 Cedar Lake Rd S, Minneapolis, MN 55405
- Project overview recording
- April: City Bicycle & Pedestrian Advisory Committees
- Tentatively in May: request City Council layout approval



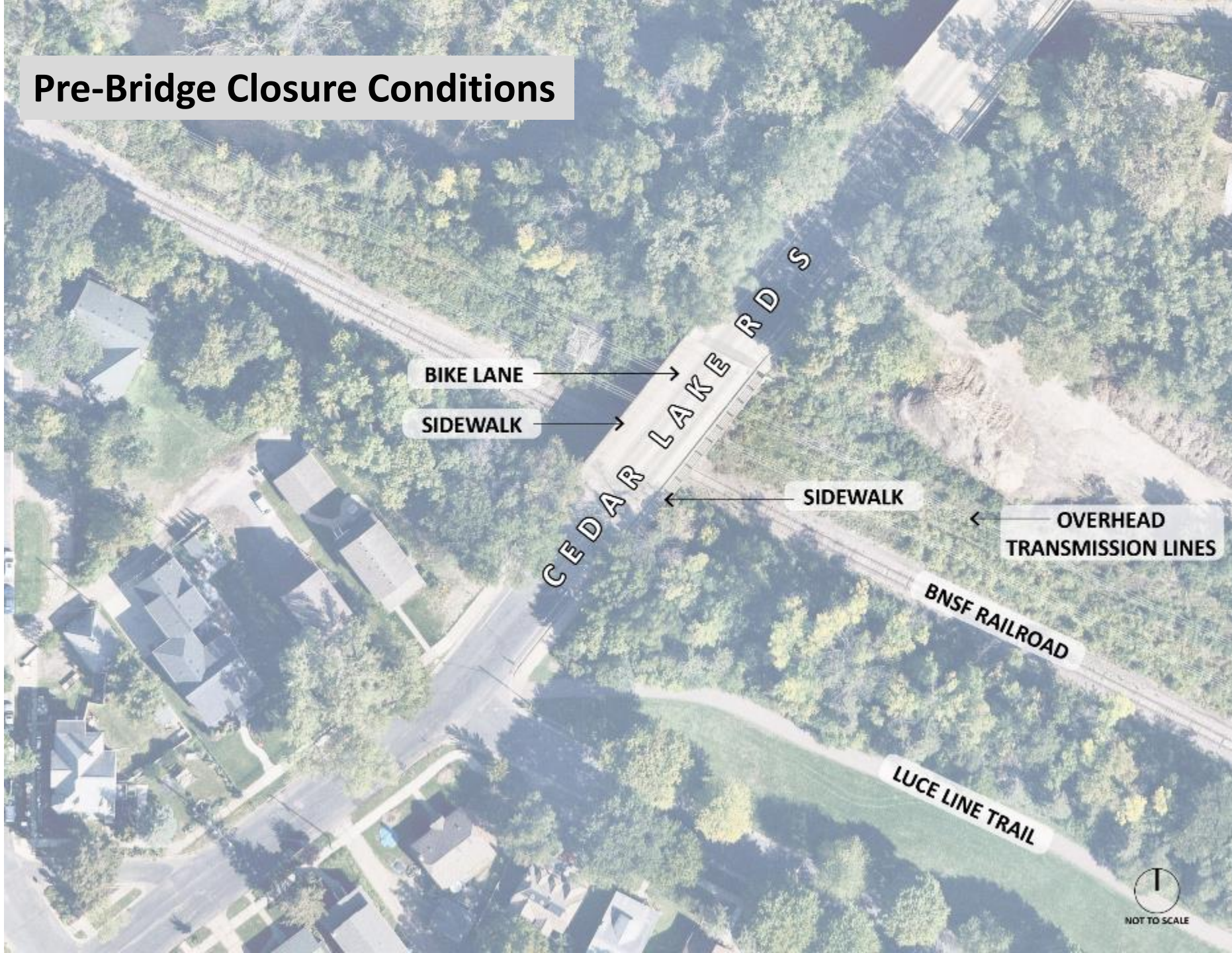
# Project Considerations

- Built in 1941 and near the end of its useful life
- Connects Bryn Mawr and Harrison neighborhoods
- Luce Line Trail
- Coordinate with MPRB & BNSF Rail
- Develop in accordance with Transportation Action Plan and Street Design Guide
- Replace aging infrastructure
- Improve bicycle/pedestrian access & safety
- Maintain vehicular access



\*2017 data obtained from Cedar Lake Road South, east of Penn Avenue South (0.2 miles from project location)

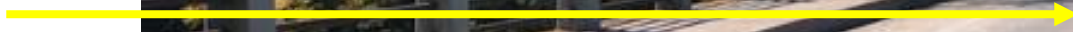
# Pre-Bridge Closure Conditions







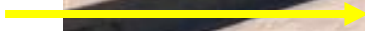
**Drive Lanes**



**Pedestrian Walkways**



**On-Street Bike Lanes**



**Overhead  
Transmission Lines**

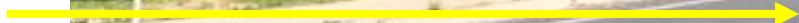


**BNSF Railroad**

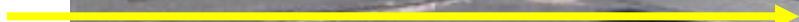




**Approach up to  
Bridge Deck**



**Painted Bike Lane**

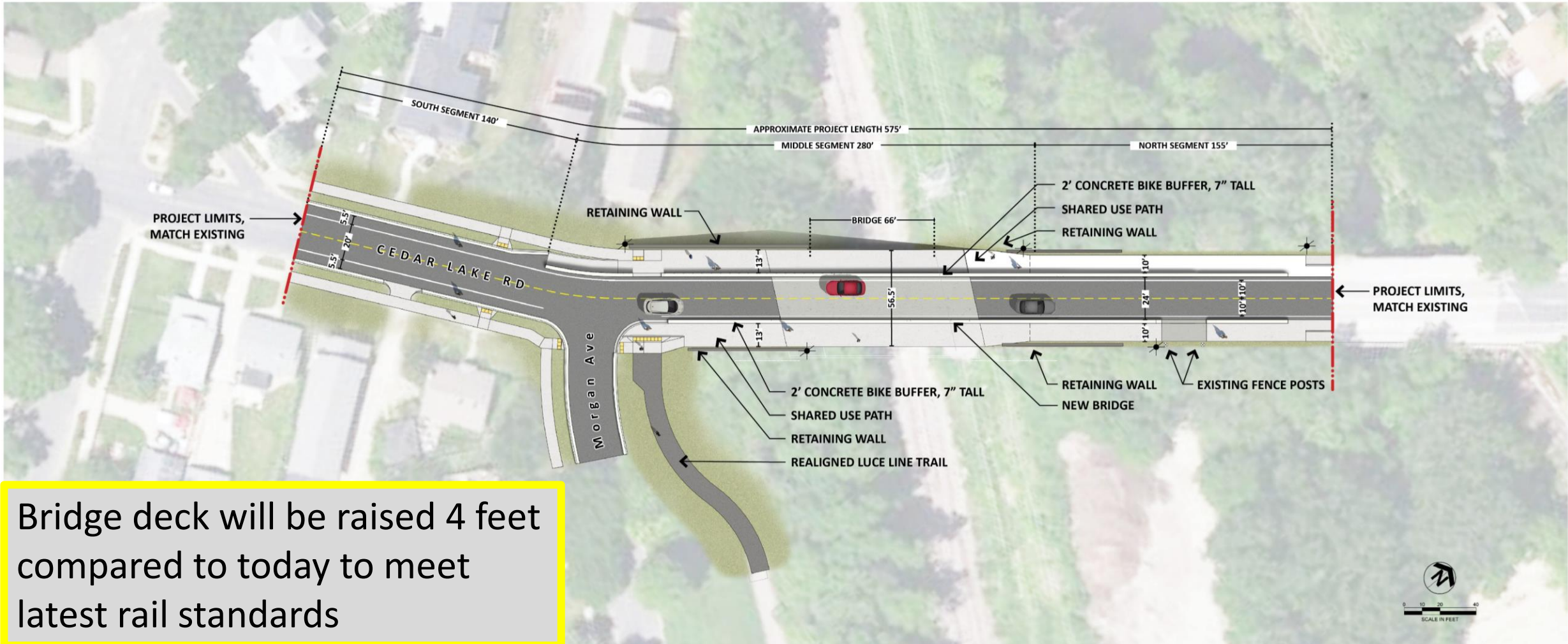


# 2021 Open House

- First virtual open house held on 10/26/2021
- 20 participants
- Common themes:
  - Prioritize pedestrians and bicyclists
  - Take into consideration future improvements for the bridge north of the project area
  - Add lighting, especially for pedestrians
  - Desire to enhance the railing aesthetics

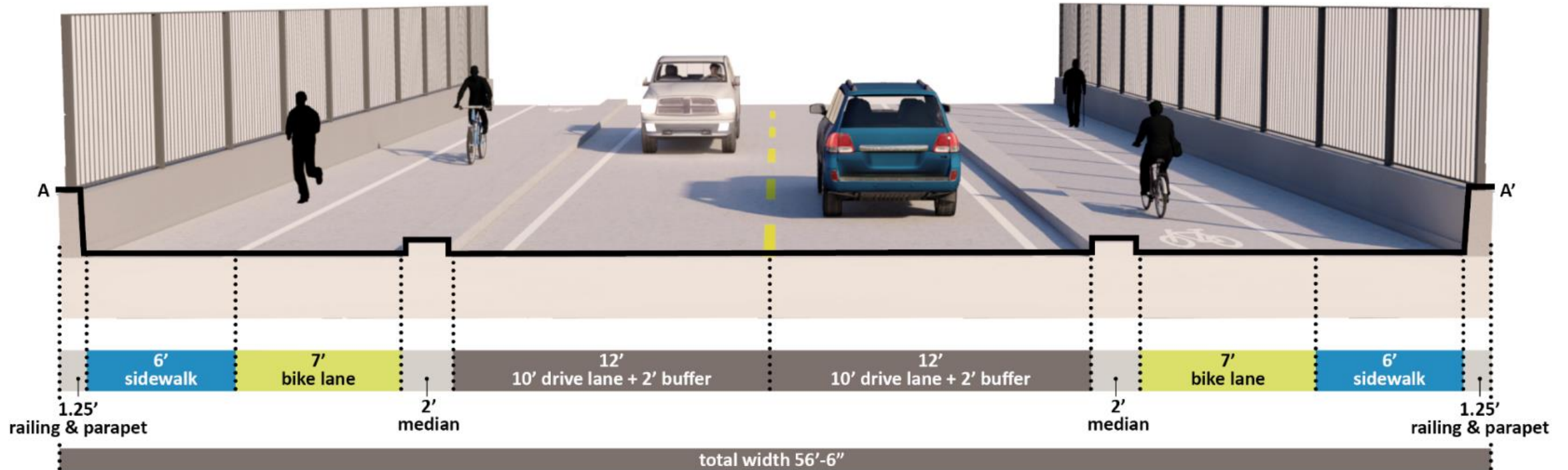


# Proposed Improvements



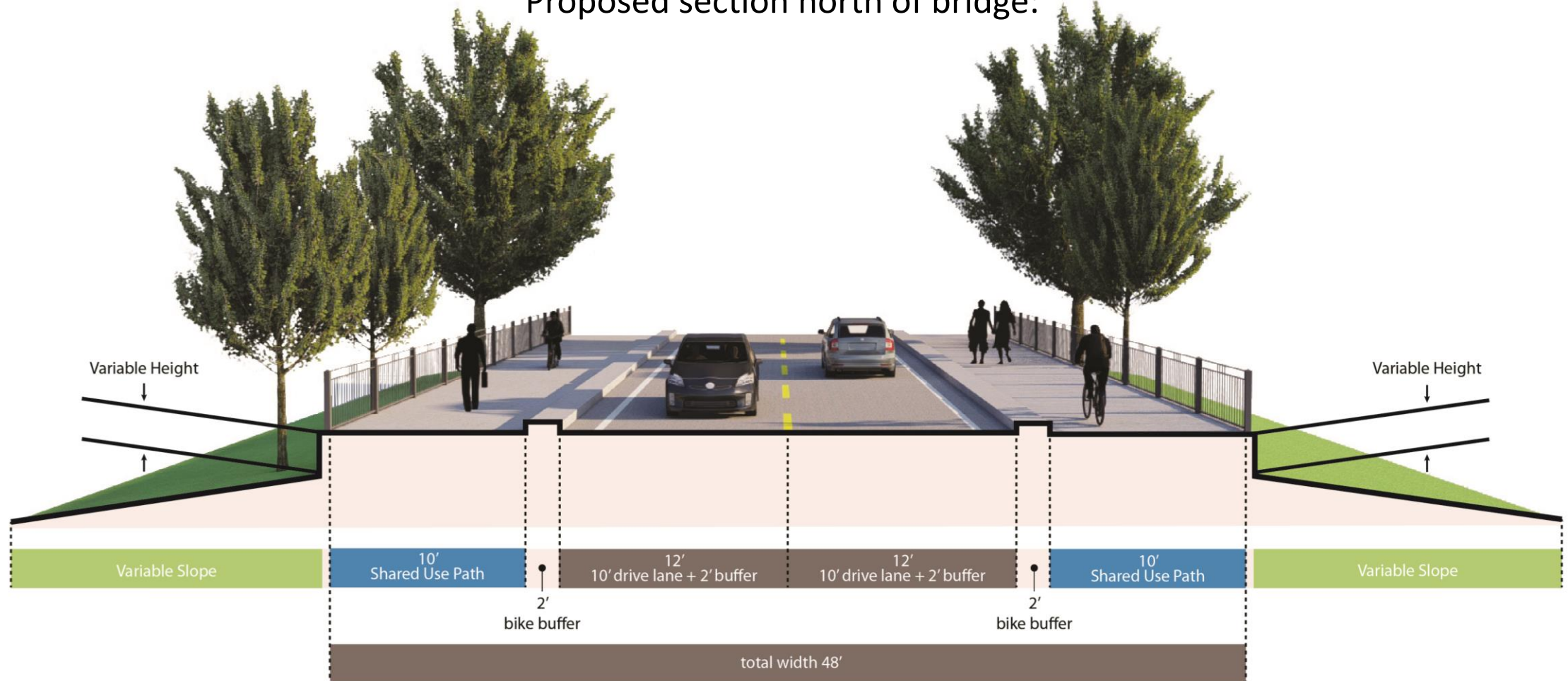
Bridge deck will be raised 4 feet compared to today to meet latest rail standards

# Proposed Improvements - Bridge



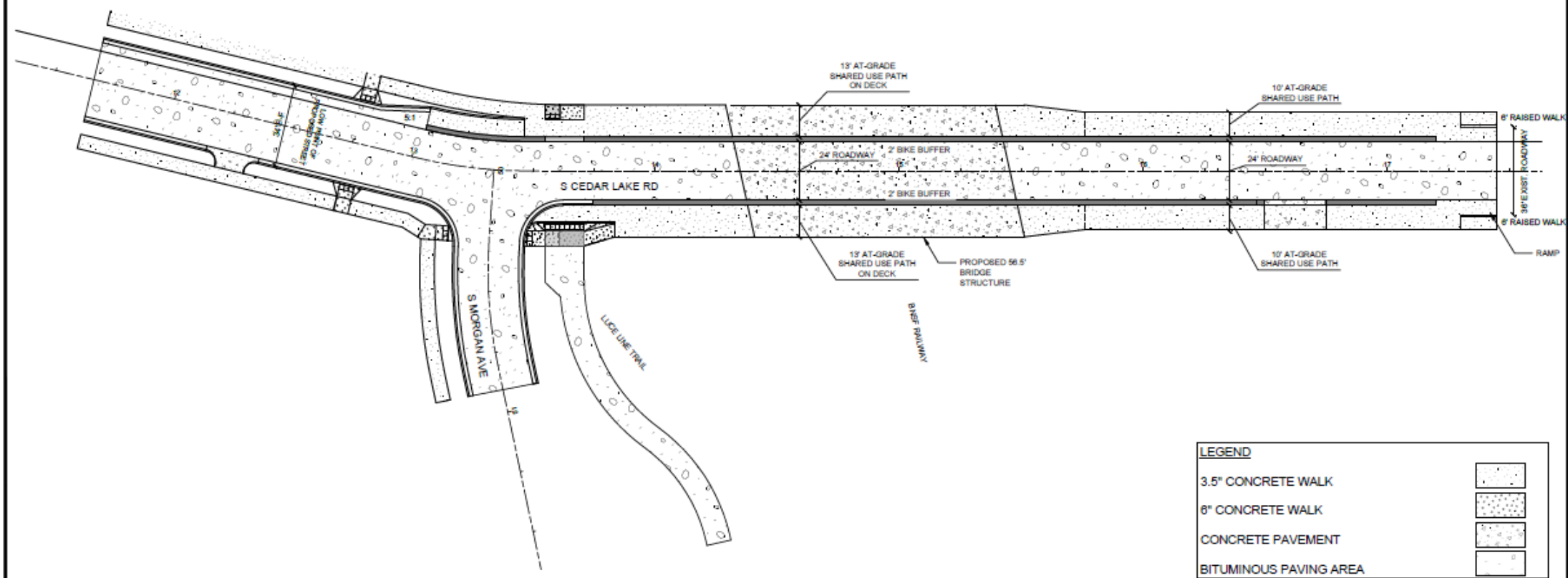
# Proposed Improvements

Proposed section north of bridge:





# Proposed Improvements

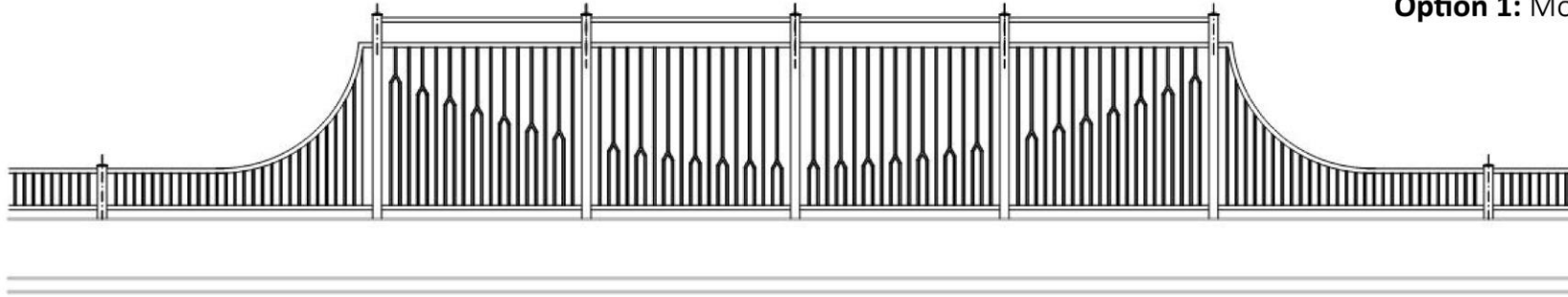


LEGEND	
3.5" CONCRETE WALK	
8" CONCRETE WALK	
CONCRETE PAVEMENT	
BITUMINOUS PAVING AREA	

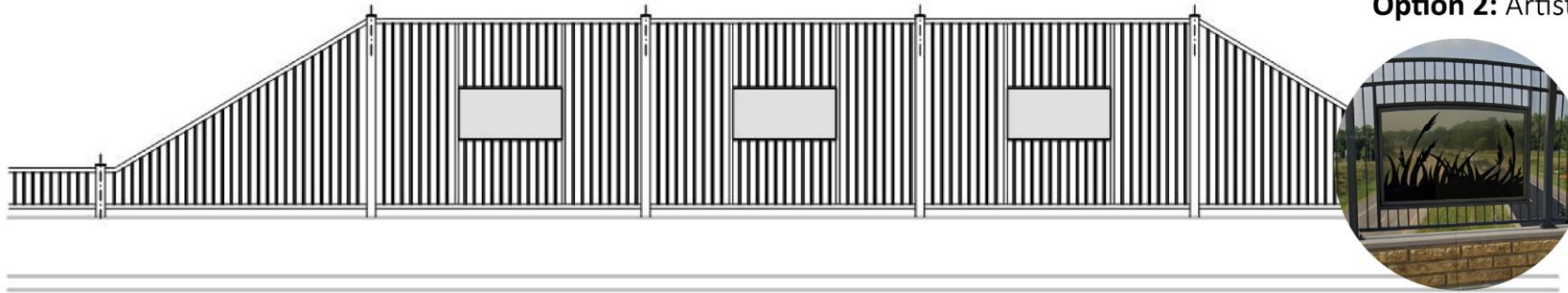


# Railing Options & Voting

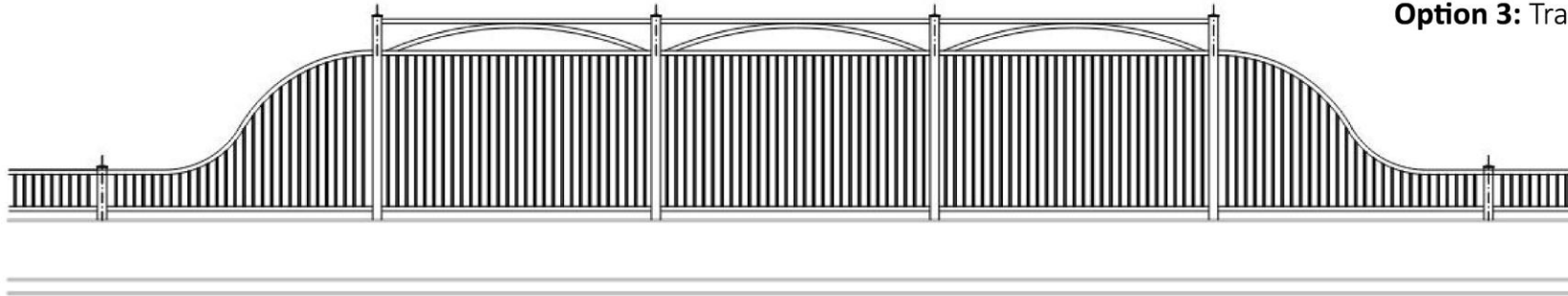
**Option 1:** Modern/Simple



**Option 2:** Artistic/Geometric



**Option 3:** Traditional/Formal

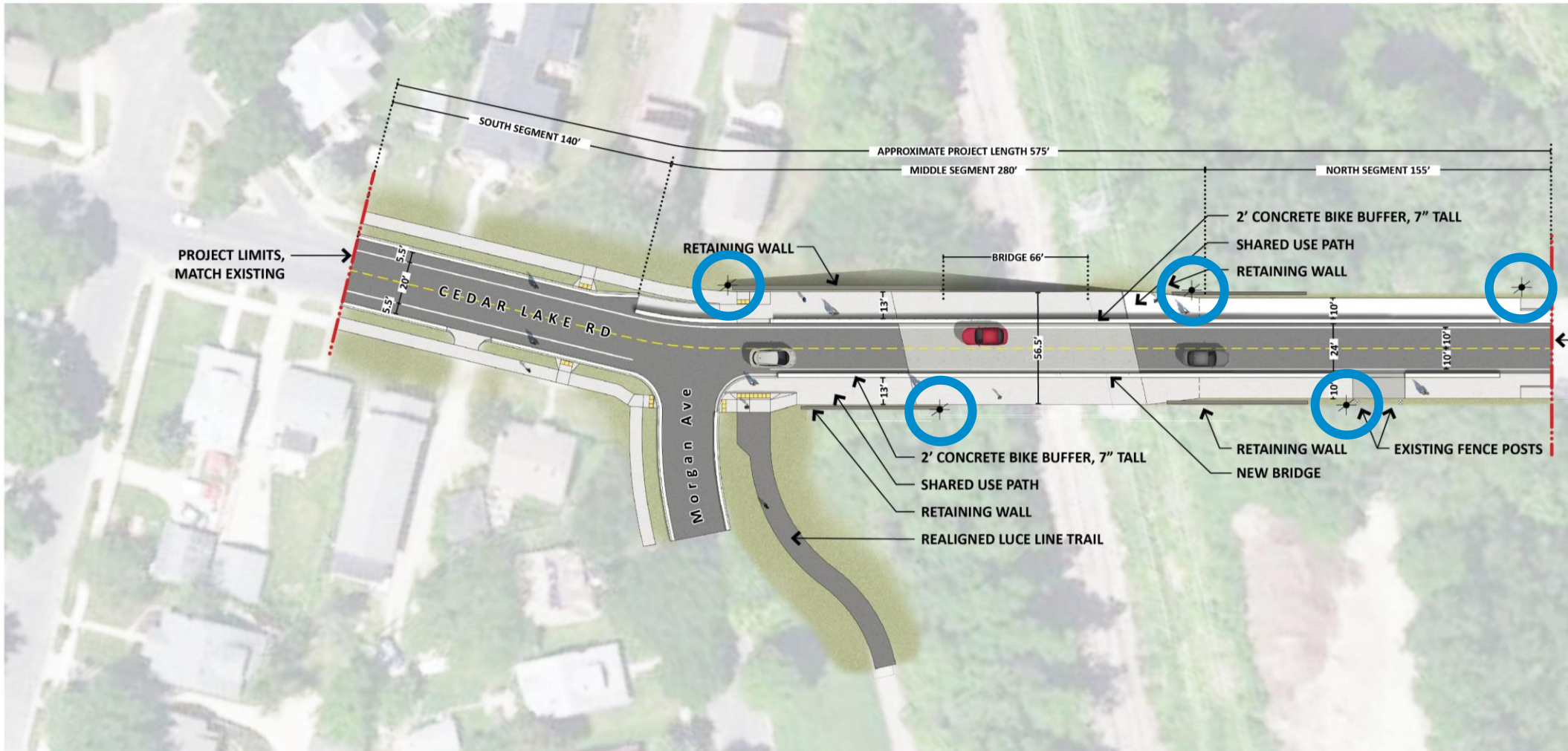


# Lighting Concepts

- Initial concept had low-level lights on the bridge with 15' poles
  - Would require closer spacing and more light poles
- Public Works maintenance staff indicated a strong preference for 30' poles with LED lamps
  - Similar to lighting on the Penn Ave bridge over the railroad
  - Materials in-stock for long-term maintenance
  - History of low vandalism on the taller lights
- Consider the overhead transmission lines in light pole placement
- Pole spacing ranges from 80' to 115'



# Concept Lighting Layout



# Questions

## Public Works Contacts

- Abdullahi Abukar, Bridge Engineer
  - [abdullahi.abukar@minneapolismn.gov](mailto:abdullahi.abukar@minneapolismn.gov)
  
- Project Website
  - [www.minneapolismn.gov/cedar-lake-rd-bridge](http://www.minneapolismn.gov/cedar-lake-rd-bridge)

