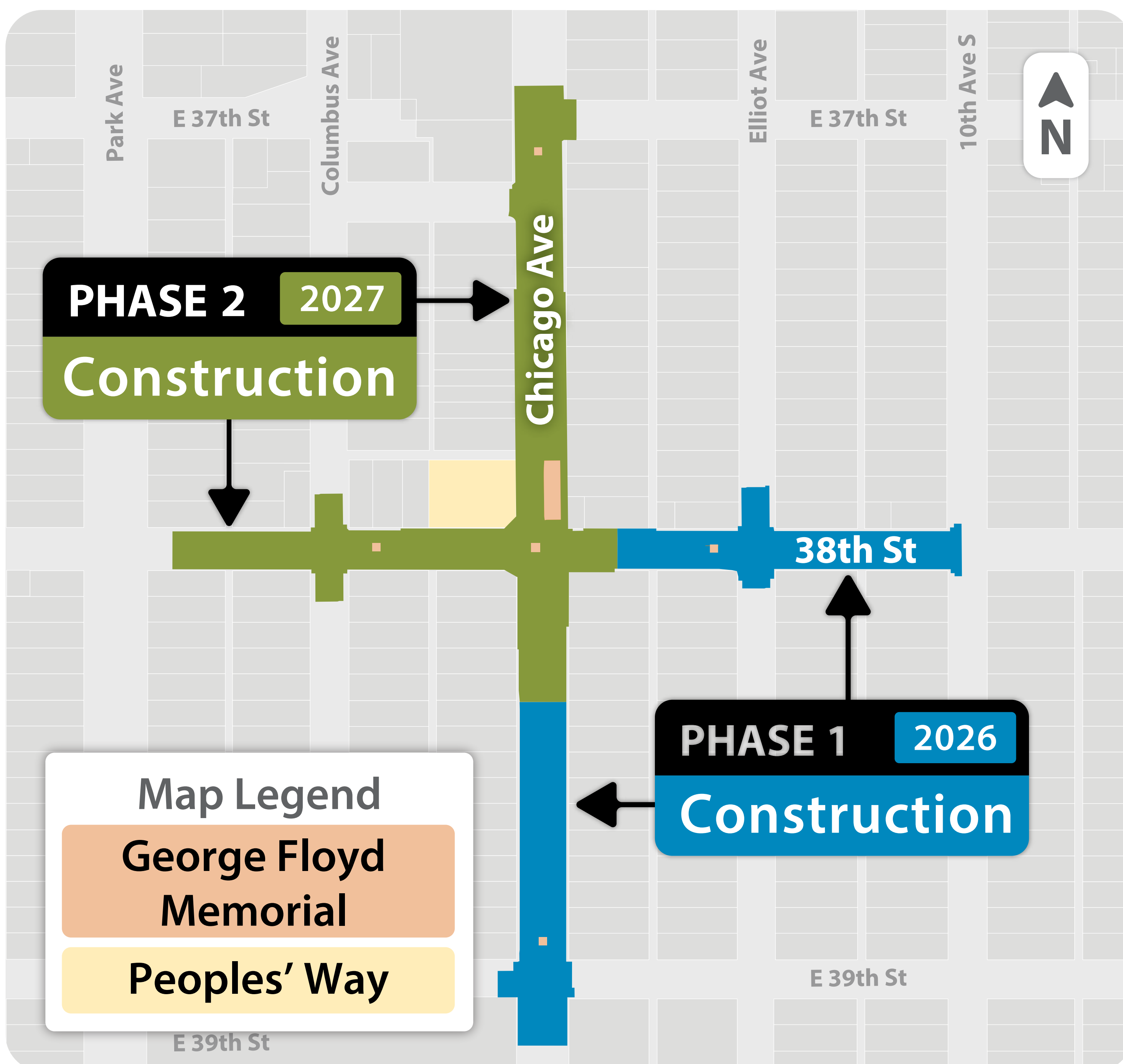
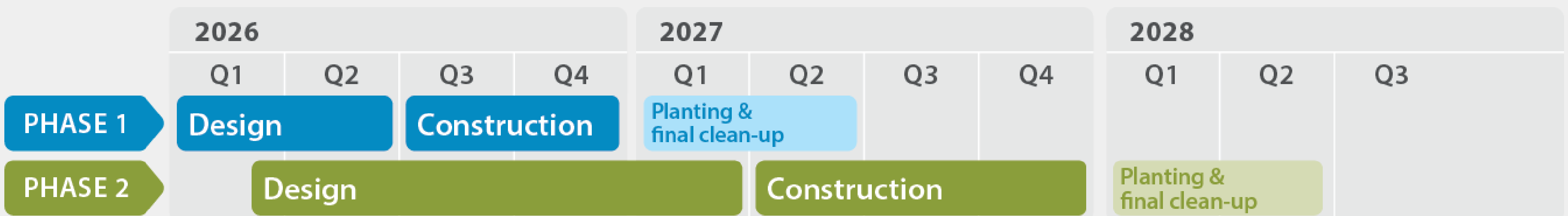


Construction phasing and timeline

Construction for 38th Street and Chicago Avenue is scheduled to begin in June 2026, with substantial completion in 2027. Plantings and final cleanup activities will continue into 2028. To meet this timeline, the project will be delivered in two construction phases.



Phase 1 (2026)

Phase 1 includes construction on:

- 38th Street between Chicago Avenue and 10th Avenue
- Chicago Avenue from 39th Street to south of the BRT station

Phase 2 (2027)

Phase 1 included construction on:

- 38th Street between Park Avenue and Chicago Avenue
- Chicago Avenue from 39th Street to 37th Street
- 38th Street and Chicago Avenue intersection
- Bus Rapid Transit stations on Chicago Avenue

Phase 1 closures

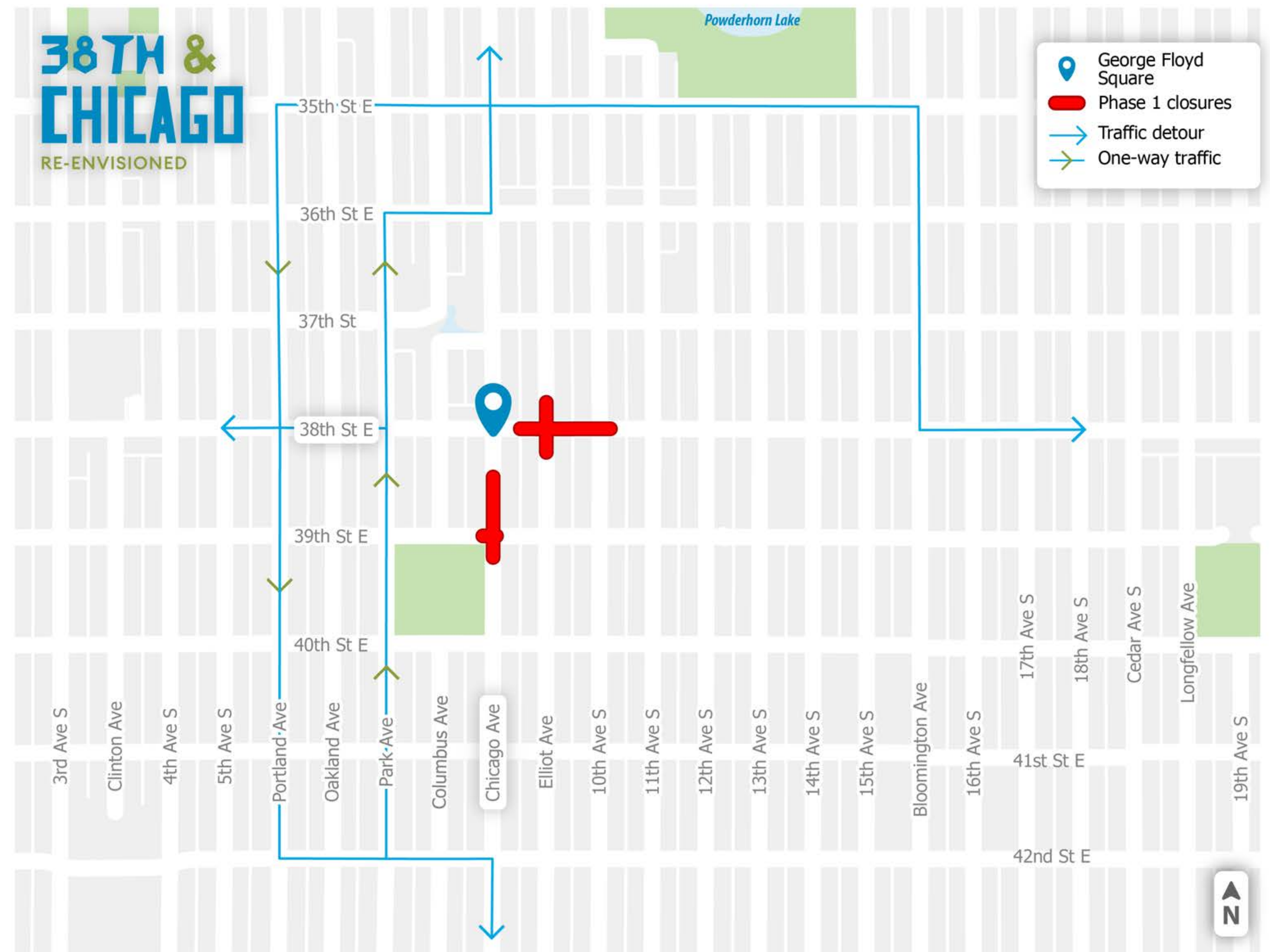
During Phase 1, roadway closures will include:

- 38th Street E, from 10th Ave S to Elliot Ave
- Chicago Avenue, from 39th Street to south of 38th Street

Phase 1 detour routes

Detour routes during Phase 1 construction will include:

- Park Avenue
- Portland Avenue
- 36th Street E
- 35th Street E
- 42nd Street E
- Bloomington Avenue



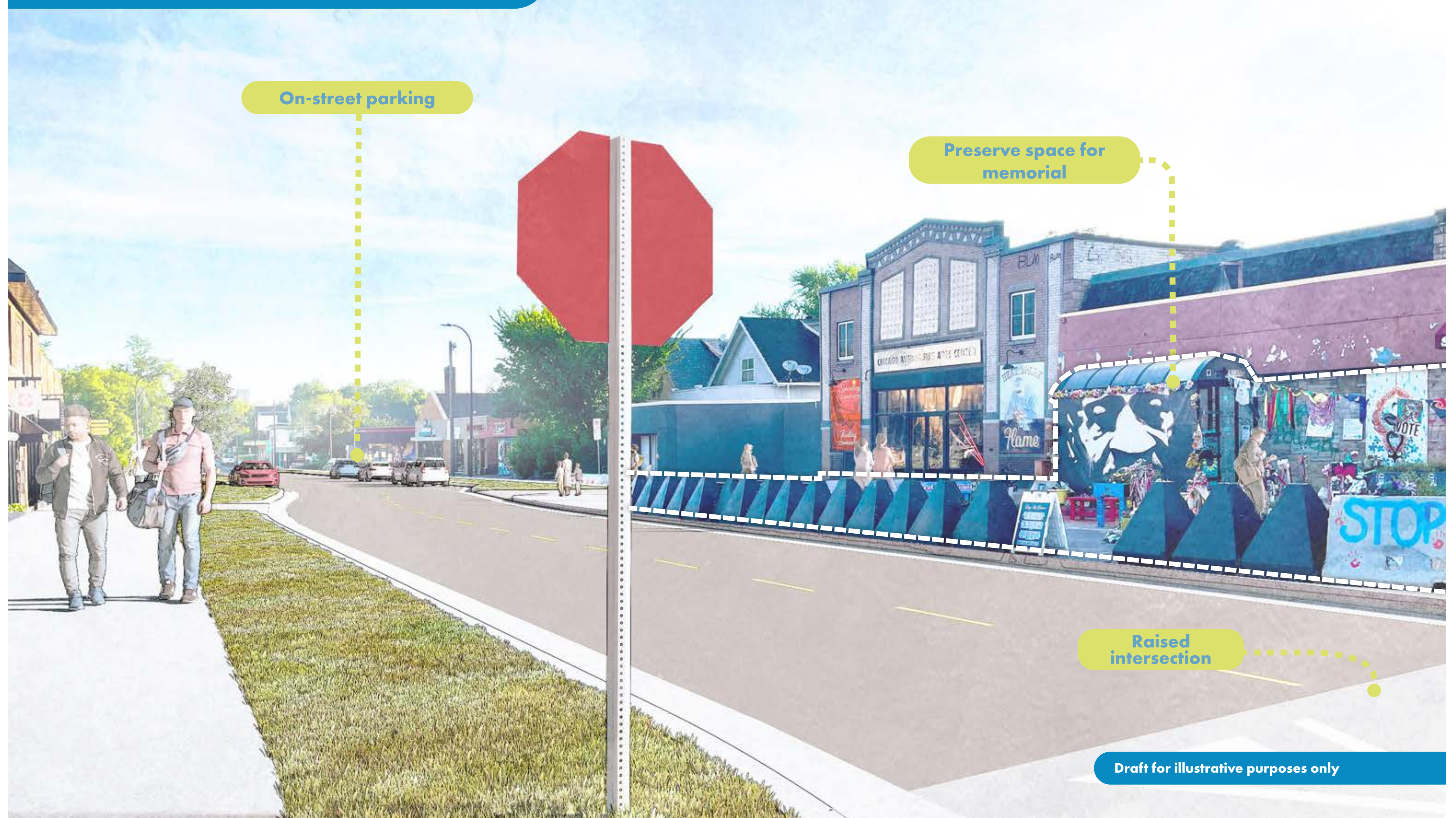
38th & Chicago

View south towards George Floyd Square



38th & Chicago

View north adjacent to George Floyd Square



38th & Chicago Ave RE-ENVISIONED

38th & Chicago

View north towards George Floyd Square



38th & Chicago

View east, south of George Floyd Square



Possible Considerations for Temporary Locations

Put a dot by your top three criteria for selecting temporary outdoor locations for the fists.

- Highly visible and serves as a gateway to the Square
- Safe and accessible for people to visit
- Retains position in road or maintains a relationship with the road
- Respects and appropriately fits with existing memorials
- Safe from construction equipment
- Does not impede access to property (parking, entryways)
- Central fist:
 - Retains central location in the square
 - Room for plants
- Small fists: Retain north, south, east and west positions (medicine wheel)

What would help a temporary location feel respectful and accessible during construction?

What to expect during Phase 1 construction



Disruption and noise

Utility work using heavy equipment will increase noise, vibration, and dust in work areas and sidewalks.



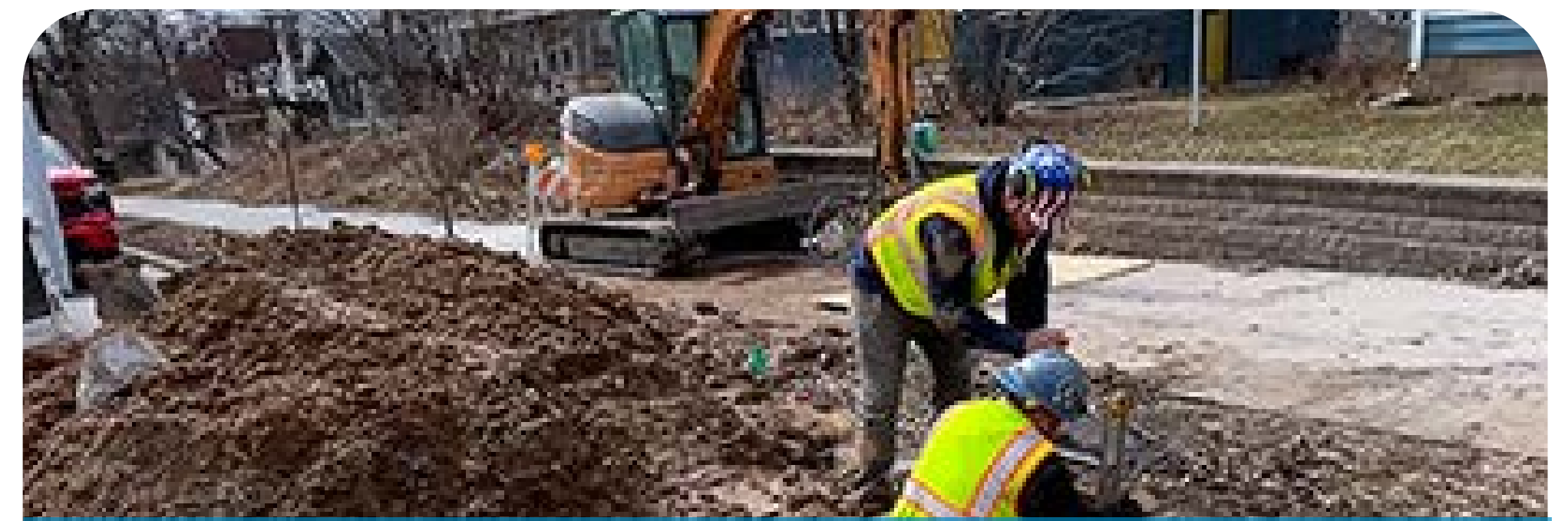
Detours and parking closures

Vehicle traffic will be detoured to nearby routes. Pedestrian detours will be set up as needed. Parking lanes may be closed at certain locations.



Business access

Access to businesses will remain open during construction at all times.



LeadService Line Replacement program

During construction, the City will replace existing lead water service lines within the project limits. We will contact eligible property owners before work begins on their property.

Construction communications

Updates on construction activities, closures, and detour information will be shared through:

- Weekly email updates
- Weekly stakeholder meetings
- One-on-one on-site meetings
- Website updates



Visit the project website and sign up for project updates on the project website.

MinneapolisMN.gov/38th-Chicago-Reenvisioned

Hennepin Ave S Reconstruction Project
(W Lake St. to Kenwood Isles)

Construction & Traffic Impact Update
Oct. 19 - Nov. 30, 2023

Minneapolis
City of Lakes

Construction work: CenterPoint Energy Gas, Sidewalk & Lane Closures, Partial Intersection Restriction, Travel Lanes

WHAT'S HAPPENING
Lake St to Kenwood Isles
- Utility Construction will continue on Phase 1 of the Hennepin So. Reconstruction Project from Lake St to 26th St. This work will continue throughout 2023 and into 2024.
- Current Utility work consists of CenterPoint Energy installing new gas mains on both sides of the corridor and installing new service connections.

WHAT TO EXPECT
Lake St to Kenwood Isles
- Utility work using heavy equipment will increase noise, vibration, and dust in work areas and sidewalks.
- Vehicle traffic will reduce travel lanes down to 1-lane in both directions during non-rush hours. Depending on the block's construction activity, Cross streets will at times be reduced to 1-lane.
- Parking lanes will be closed at certain locations.

STAY CONNECTED
Visit the project website
Sign up for project updates on the project website.
MinneapolisMN.gov/government/projects/hennepin-ave-s/

CONTACT US
Adam Hayow, Project Engineer - Public Works
812-673-2172 | adam.hayow@minneapolismn.gov