



Minneapolis Central City
Tunnel System



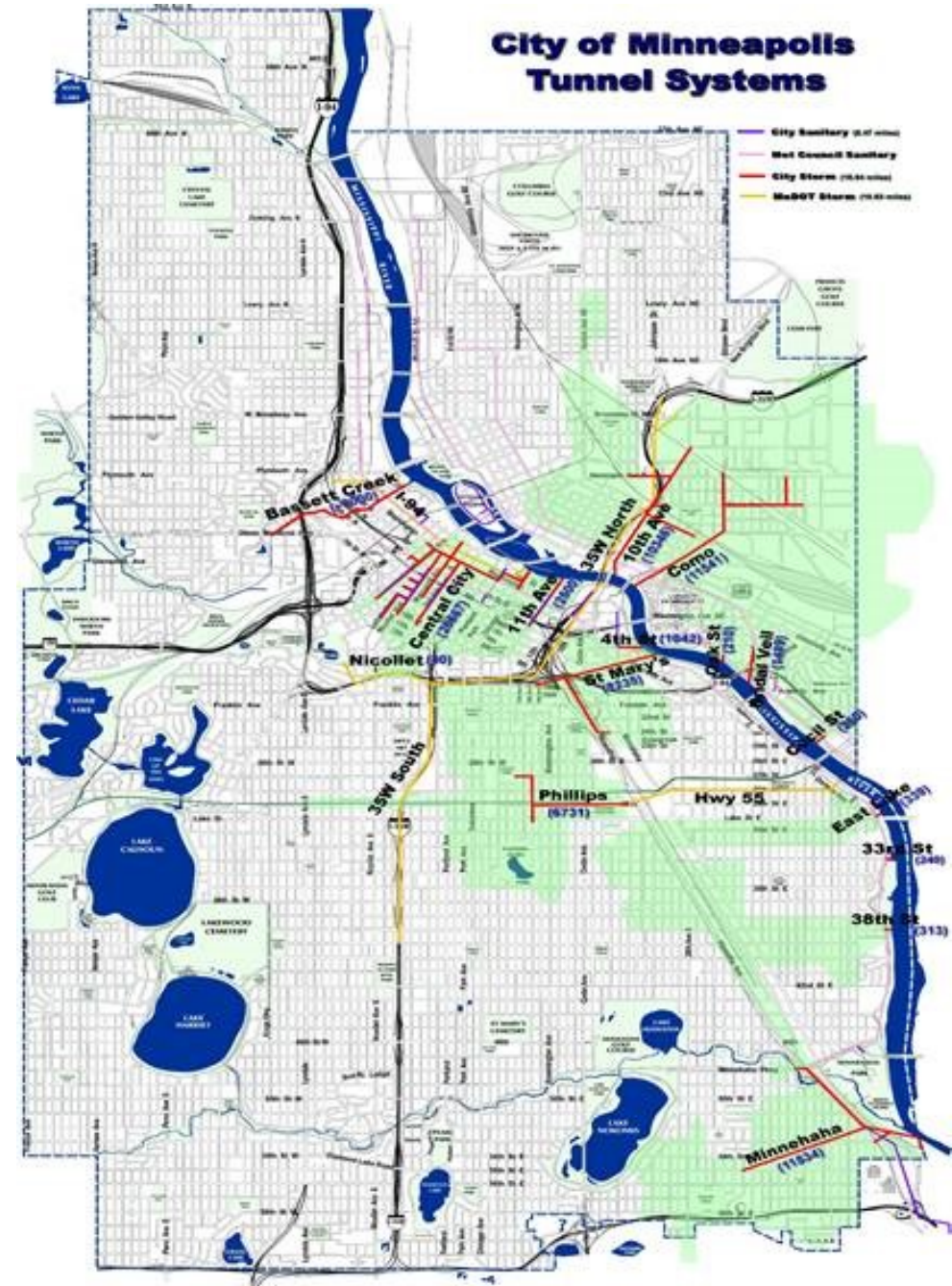
Minneapolis
City of Lakes

Virtual Design Open House

July 21, 2020

Minneapolis Storm Tunnel System

- Approximately 46 miles of sanitary and storm tunnels in Minneapolis
- The City of Minneapolis is responsible for:
 - 16 miles of sanitary sewer tunnels
 - 15 miles of storm tunnel systems

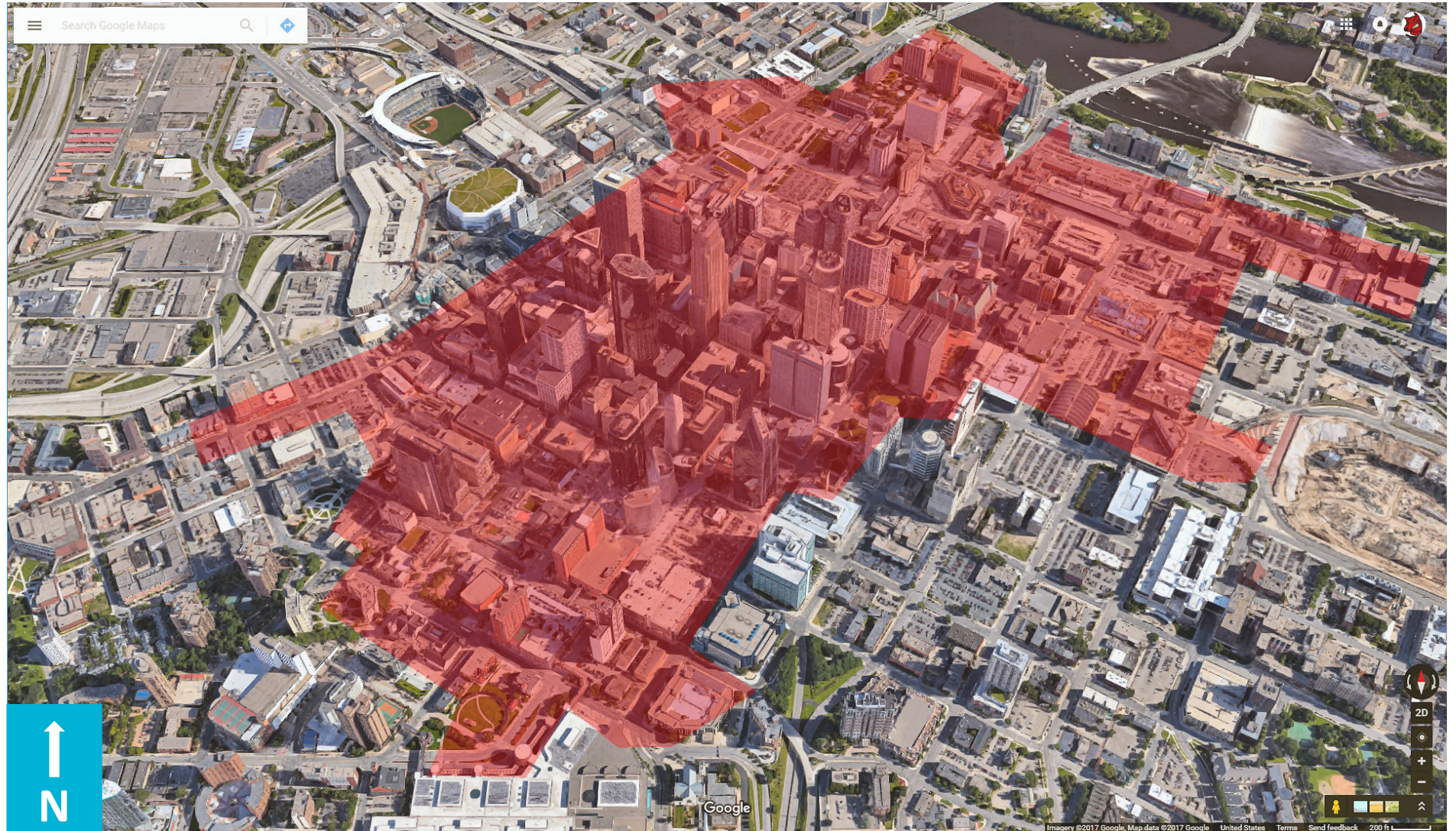


Project Need

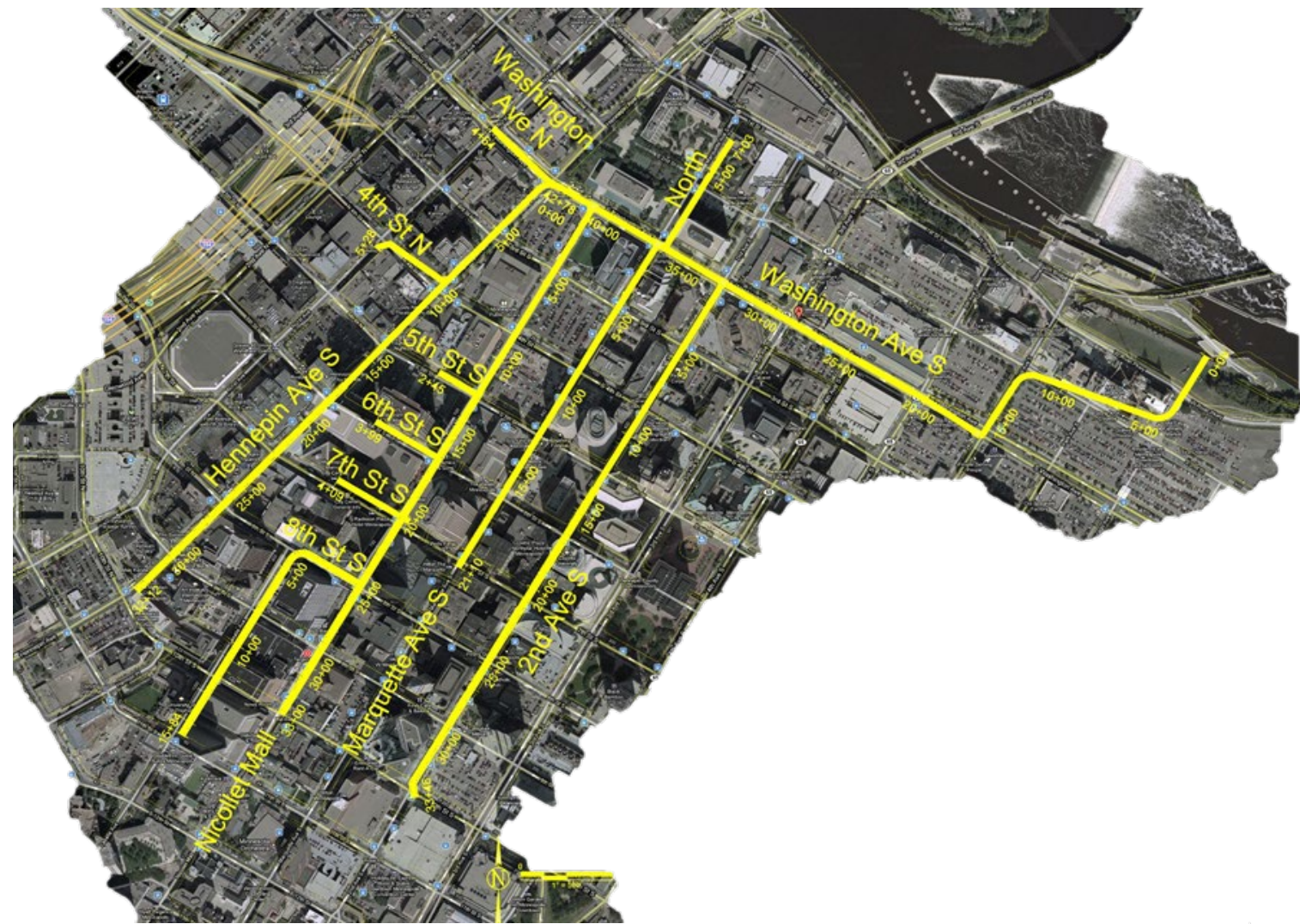
More development in downtown
creates more stormwater runoff
into the tunnels



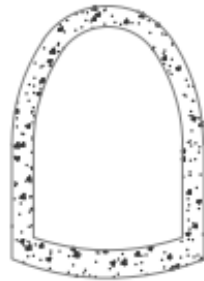
Central City Tunnel Drainage Area



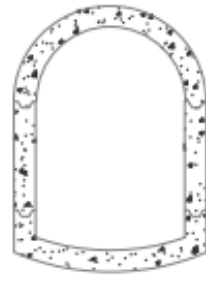
Central City Storm Tunnel System



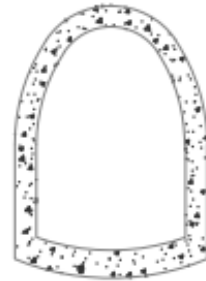
Washington Tunnel is undersized



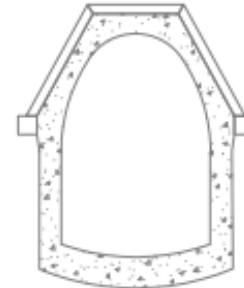
2ND AVE
TUNNEL



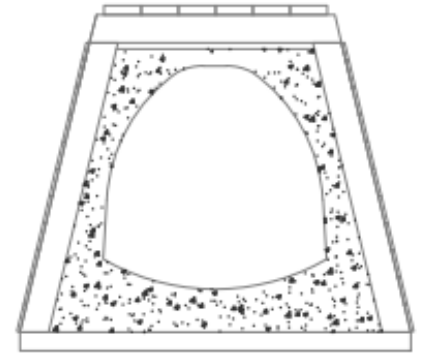
NORTH
MARQUETTE
TUNNEL



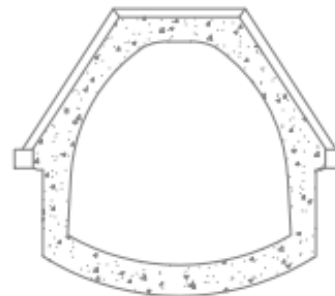
SOUTH
MARQUETTE
TUNNEL



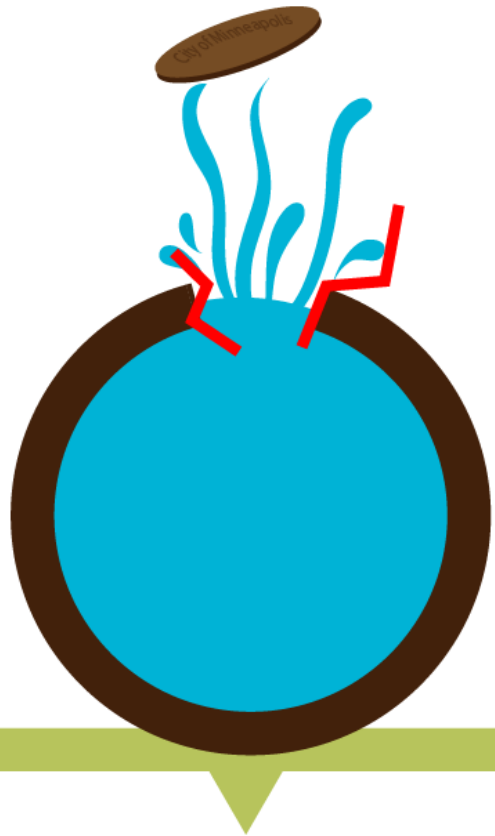
NICOLLET
TUNNEL



HENNEPIN
TUNNEL



WASHINGTON
TUNNEL



Project Need

The existing tunnel is full of water and pressurized, causing potential public safety hazards and damage to the tunnel



Void above tunnel

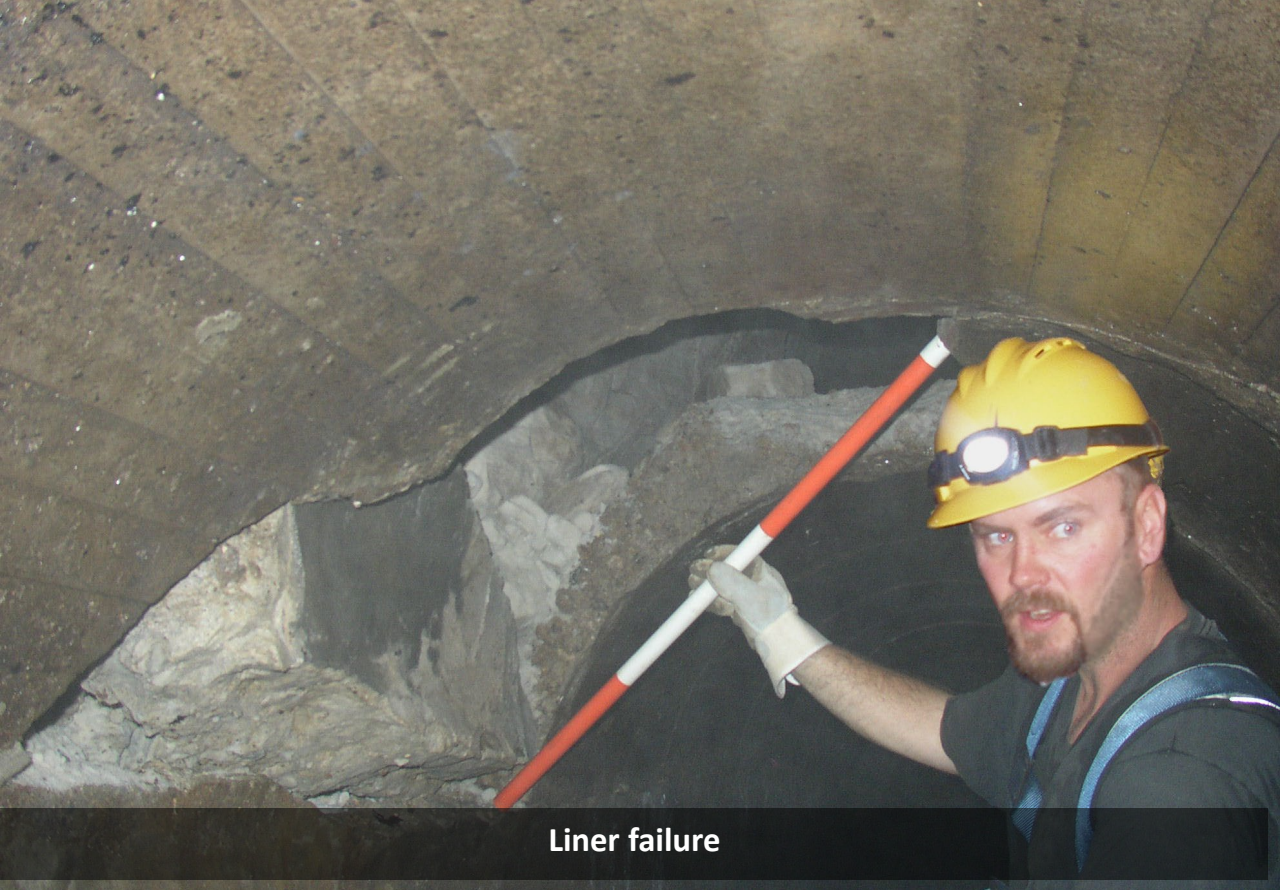


Sand in tunnel



Liner failure

Examples of Central City Tunnel Damage



Liner failure

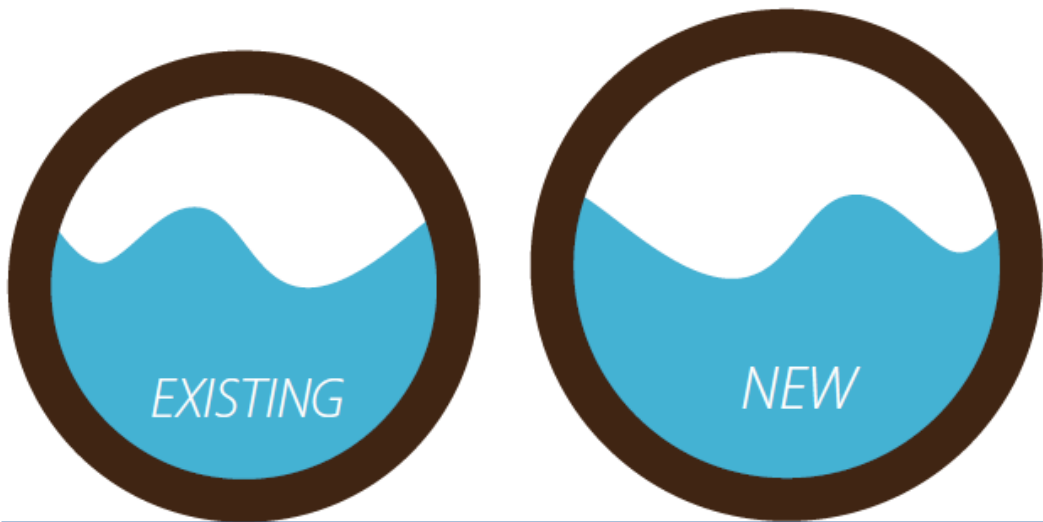


Void and sand above tunnel

Examples of Central City Tunnel Damage

Project Need





Future Tunnel Scenario



The new tunnel will increase tunnel capacity for stormwater runoff, which will reduce possible flooding risk and tunnel service failure

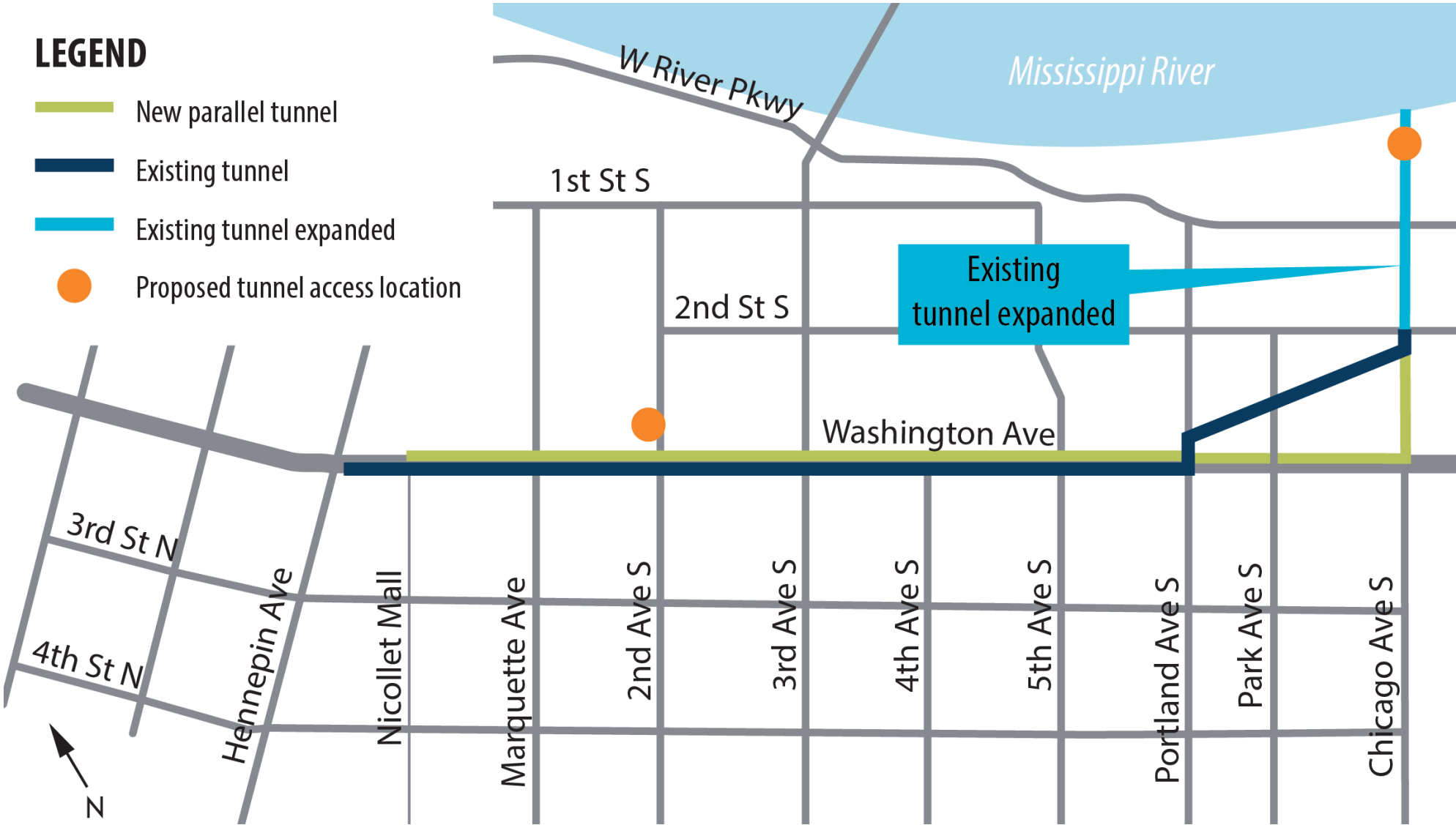
Project Overview

LEGEND

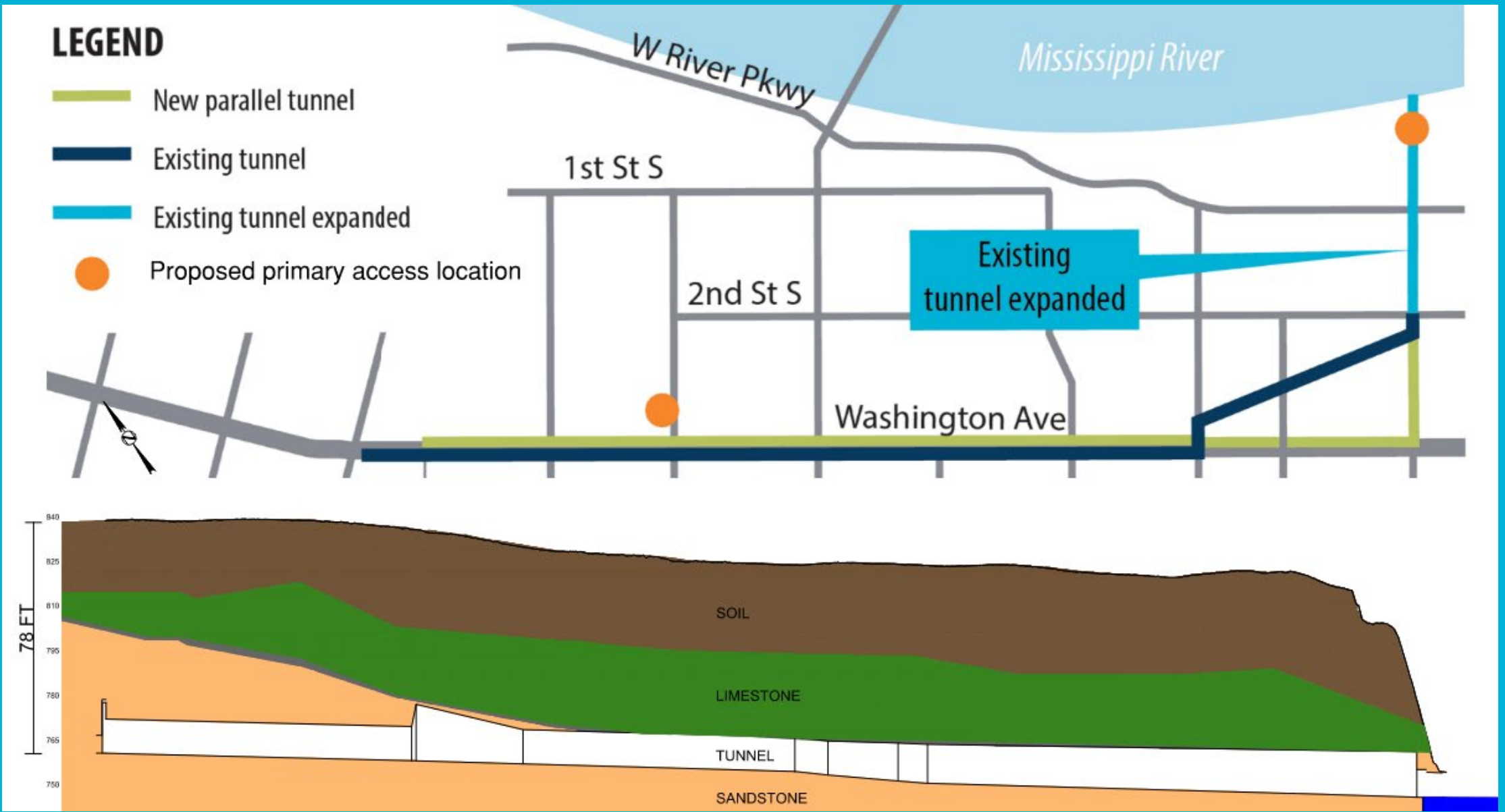
-  New parallel tunnel
-  Existing tunnel
-  Existing tunnel expanded
-  Proposed tunnel access location

The City of Minneapolis is designing:

- A new parallel stormwater tunnel
- Two new tunnel access locations
- An expansion of the existing central city stormwater tunnel



Anticipated Construction





Work site at river



Outlet Excavation Area

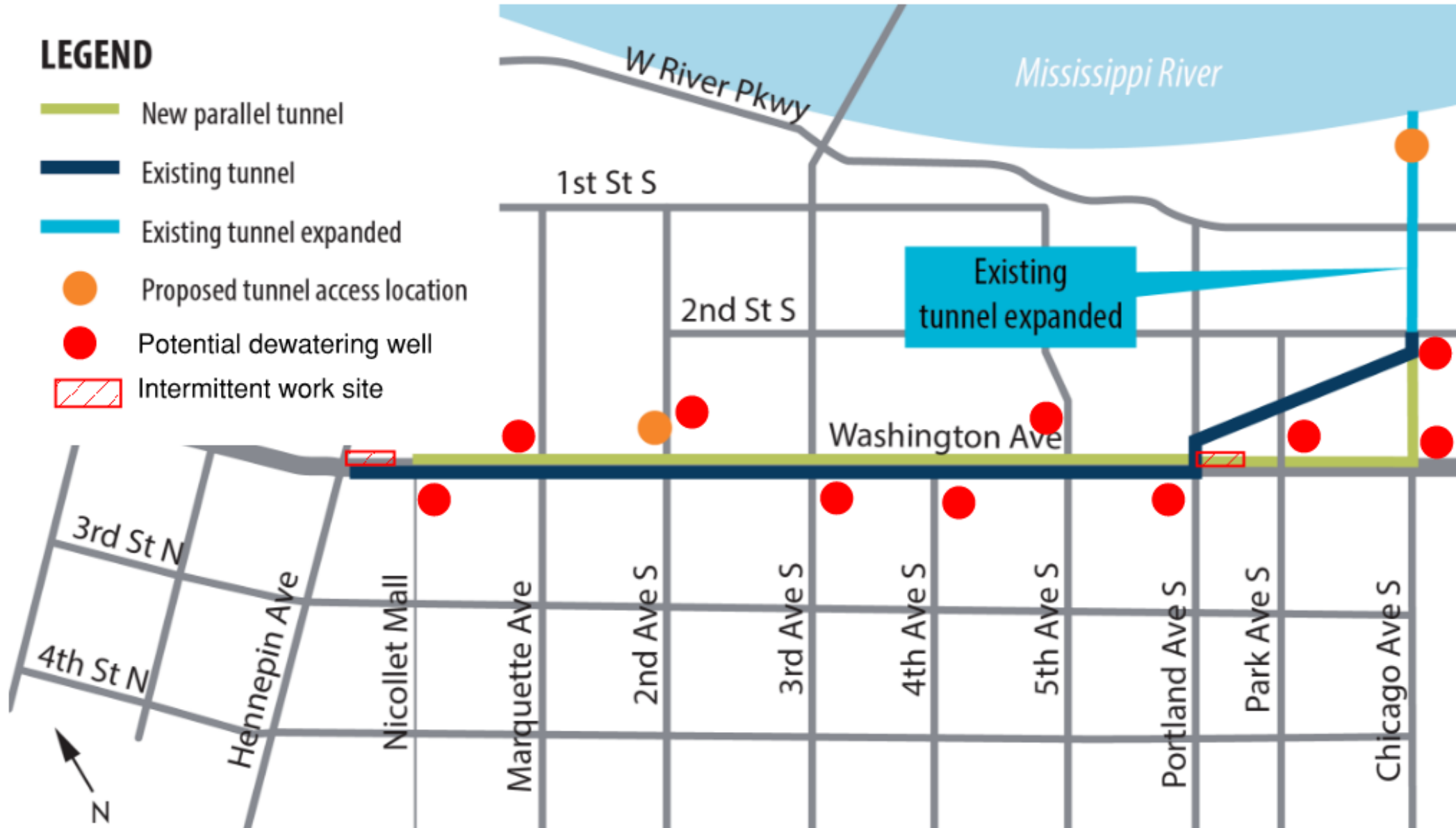




2nd Ave Access Shaft



Intermittent work sites and dewatering wells

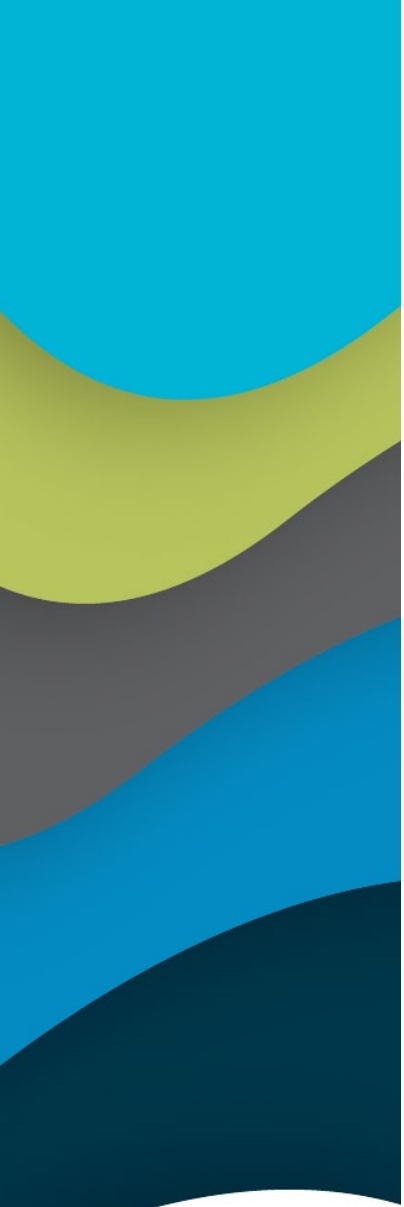


Washington Ave & Portland Ave Staging Area

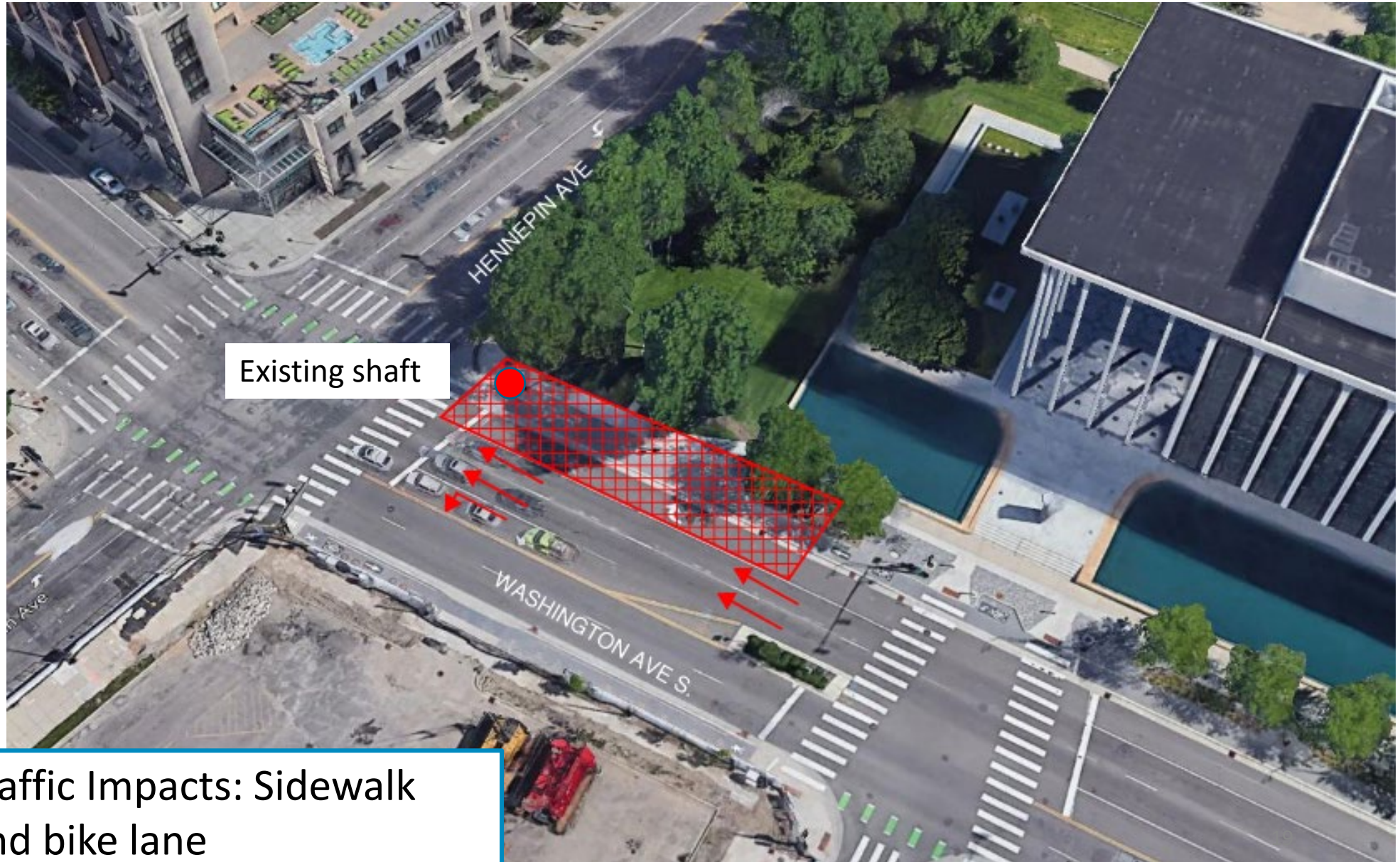


Existing shaft

Traffic Impacts: Driving lane, bike lane, and parking



Washington Ave & Hennepin Ave Staging Area



Existing shaft

Traffic Impacts: Sidewalk
and bike lane

Dewatering Wells

- Up to 10 dewatering wells in the construction area
- Utility coordination
- Example of dewatering well (below)



Anticipated Schedule

	2021				2022												2023		
	Sep	Oct	Nov	Dec	Jan	Feb	Mar	Apr	May	Jun	Jul	Aug	Sep	Oct	Nov	Dec	Jan	Feb	Mar
Parallel Tunnel Construction																			
Dewatering Wells																			
2nd Ave Access Shaft																			
2nd Ave Excavate and Line Tunnel																			
Outlet Excavation																			
Outlet Excavate & Line Tunnel																			
Outlet Construction																			



Next Steps

- Funding approval
- Final design (early 2021)
- 2nd Public Meeting (prior to construction)
- Construction begins (Fall 2021)

Schedule is tentative and subject to change

Stay Informed



Email: info@mplscentralcitytunnel.com



Phone: 612-888-9418



Website:

www.minneapolismn.gov/centralcitytunnel