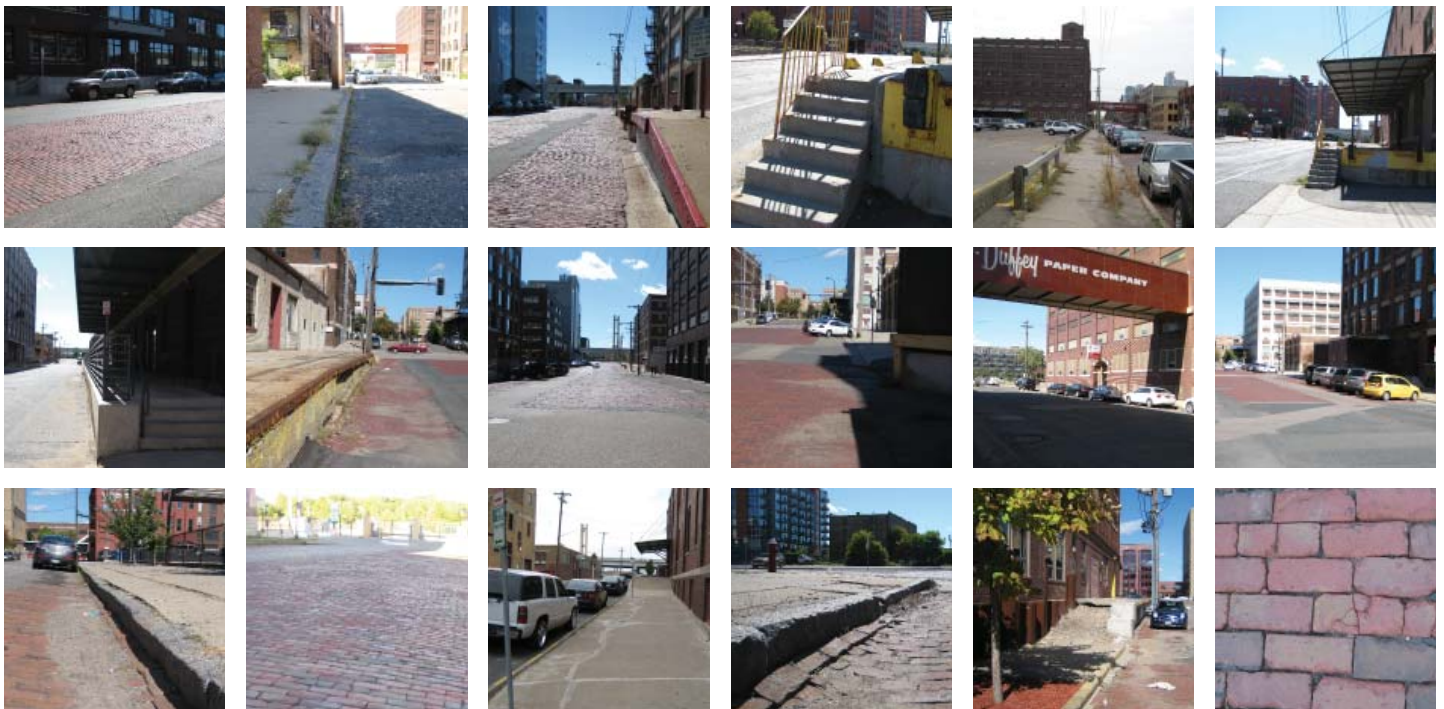


CITY OF MINNEAPOLIS

# Warehouse District Heritage Street Plan



Prepared for City of Minneapolis Community  
Planning & Economic Development (CPED)  
September 13, 2011

## APPENDIX 4 Public Process – Comments and Actions





City of Minneapolis Pedestrian Advisory Committee Field Walk  
Summary Notes  
Wednesday, October 6, 2010  
3:30 pm to 5:00 pm

#### Location

Warehouse District Heritage Streets

#### Participants

James Andrew, PAC member  
Neal Baxter, PAC member  
Beth Elliott, Minneapolis Community Planning and Economic Development Dept.  
Anna Flintoft, Minneapolis Public Works Dept.  
Anna Gillette, PAC member (and son Charles in stroller)  
Matti Gurney, PAC member (and daughter Tessa in stroller)  
Martha Hage, PAC member  
Elizabeth Haugen, PAC member  
Tony Hull, PAC member  
Dan Herber, PAC member  
Lonnie Nichols, Park Board  
Karen Nikolai, Hennepin County  
Liliana Rivera, Bike/Walk Ambassadors  
Karen Rosar, North Loop resident  
Brian Schaffer, Minneapolis Community Planning and Economic Development Dept.  
John Slack, North Loop resident  
Sarah Stewart, Minneapolis Department of Health and Family Support  
Kelly Wilder, PAC member

#### Observations

(Participants rated the following factors on a scale of 1 to 5 where 1 is a poor pedestrian condition and 5 is a good pedestrian condition. The overall rating was an average of 2.)

- PEDESTRIAN FACILITIES (Average rating: 3)
  - E-W streets (3rd St N, Washington Avenue N) have continuous sidewalks, but N-S streets (5th Avenue N, 6th Avenue N, 7th Avenue N) have major gaps in sidewalk continuity due to loading docks and truck doors. Varies widely block to block. 6th Avenue N has virtually no sidewalks.
  - The loading dock at SE corner of 6th/3rd was shaved to provide a sidewalk; however, Brian Schaffer observed that this is not desirable from a preservation standpoint (see photo).
  - The loading dock at Washington/7th Avenue N does a better job of maintaining the historic integrity of the loading dock, while also providing for accessibility, via a combination stair/ramp (see photo). However, this location should have had a ramp at the other side of the loading dock, as well. The railings also match the historic character of the building.
  - The loading docks/ramps need to have a continuous railing from floor level to hand railing level to prevent



children from falling under the hand railing; this is a problem on many existing loading dock railings.

- Having to zig-zag from one side of the street to another is very inconvenient for pedestrians. It would be better to have a continuous path of travel on at least one side of the street for several blocks than what is existing.
- Some sidewalk gaps (where there are no loading docks) exist and need to be filled in (end of 3rd St N 10th Avenue N).
- Super blocks made convenient walk access an issue.
- There is a dirt path west of the intersection of 3rd Avenue N and Traffic St connecting the I-394 on-ramp and the alley between Washington and 3rd St N.

- **PEDESTRIAN CONFLICTS** (Average rating: 2)

- Lack of sidewalks presents high conflict potential between pedestrians and vehicles.
- Observed buses honking at pedestrians.
- Observed semi-trucks blocking entire street to back into building.
- 6th and 7th Avenues are probably the worst streets for ped/bike and vehicular conflicts because of the numerous loading docks and use by trucks and buses.
- The brick streets not only add to the historic character, but also help to manage traffic speeds.

- **CROSSWALKS** (Average rating: 2)

- There are no marked crosswalks in this area.
- Pedestrians generally cross where they feel most comfortable, which may not necessarily be at intersections, particularly where there are loading docks interrupting the continuous sidewalks network.
- Pedestrians shouldn't have to push the button to get a "walk" when the light turns green anyway.

- **MAINTENANCE** (Average rating: 2)

- Neither sidewalks nor the street are being maintained.
- The sidewalks are severely cracked in many locations.

- **PATH SIZE** (Average rating: 3)

- Where there is a continuous sidewalk, the width is fairly comfortable (at least 6 feet wide in most places).
- Areas adjacent to 8th and the end of 3rd St have narrower walks.

- **BUFFER** (Average rating: 2)

- Good buffer with trees along Washington Avenue.
- No buffer on streets with a lack of continuous sidewalks.

- **UNIVERSAL ACCESSIBILITY** (Average rating: 2)

- Loading docks impede accessibility. On existing loading docks, the stairs, steep ramps, or lack of ramps/stairs impede accessibility.
- Cannot always tell visually whether the end of a loading dock has an accessible ramp or not.
- There are curb ramps in one direction in many locations. This, in combination with other accessibility issues, such as vertical obstructions, cracked sidewalks and steep slopes, create difficult crossing issues.
- Sidewalks are cracked and heaving, impeding accessibility.

- There are a growing number of children in the North Loop neighborhood, and safe and convenient access for strollers is a big issue.

- There is a large pole in middle of ramp at 3rd St and 5th Avenue.

• AESTHETICS (Average rating: 3)

- The historic character of the warehouse district creates an interesting pedestrian environment, and it should be preserved. The brick and wooden pavers, in particular, are cool.

- This is a very urban environment that is active with businesses and residents. This makes it an appealing place to be a pedestrian. People especially like the areas with outdoor seating.

- The surface parking lots, noise, and lack of trees creates an unappealing pedestrian environment and negatively impacts the livability of the area.

- There is a particularly uninviting environment on 5th Avenue under the 3rd/4th viaducts.

• SHADE (Average rating: 2)

- There are very few trees in this area. Buildings provide the only shade.

- There are definitely opportunities for more trees. Trees contribute to shade, stormwater management and aesthetics.

- Trees are particularly needed along 5th Ave N, as this is a major feeder to LRT/Northstar and ballpark, and there is no shade provided by either buildings or trees.

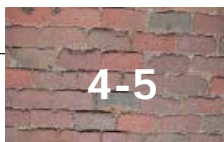
### Selected Photos



Washington Avenue @ 7<sup>th</sup> Avenue N



3<sup>rd</sup> Street N @ 6<sup>th</sup> Avenue N



## **Minneapolis Heritage Preservation Commission**

Actions

Regular Meeting

4:30 p.m., Tuesday, August 23, 2011

Room 317, City Hall

350 South Fifth Street

Minneapolis, MN 55415-1385

Commission Membership: Mr. Chad Larsen, Ms. Denita Lemmon, Mr. Kevin Kelley, Ms. Meghan Elliott, Mr. Alex Haecker, Ms. Christina Harrison, Ms. Susan Hunter Weir, Ms. Ginny Lackovic, Ms. Tammy Lindberg, and Ms. Linda Mack

Planning Manager: Jack Byers, 612.673.2634

Committee Clerk: Diana Armstrong, 612.673.2615

Commissioners Harrison, Lindberg, and Mack were absent and excused from tonight's meeting.

The meeting was called to order at 4:38 p.m.

Minutes were approved for the meeting held on August 8, 2010

Public Hearings

For Presentation

### **1. Warehouse District Heritage Street Plan**

Staff: Beth Elliott, 612.673.2442

Continued from the August 8, 2011, Heritage Preservation Commission Meeting

Proposed Warehouse District Heritage Street Plan as an articulation of policy direction adopted in the Warehouse Historic District Designation Study, Warehouse Historic District Design Guidelines, and North Loop Small Area Plan.

Action: Adopt staff findings and approve the Warehouse District Heritage Street Plan as an articulation of policy direction as proposed and drafted and that future actions and/or projects requiring a Certificate of Appropriateness include, but are not limited to include, an historic interpretation plan, an overall utilities placement and integration plan, and an historic pavers storage plan.

### **New Business**

Preservation Alliance of Minnesota Conference, Tuesday, August 30. (Lackovic)

Pillsbury A-Mill Complex Project Update. (Byers)

State Historic Preservation Conference Update. (Byers)

Legacy Funds Update. (Byers)

Pioneers & Soldiers Fundraiser, Saturday, October 8. (Byers)

St. Anthony Falls Guidelines Draft Update. (Byers)

National Trust/American Express Preservation Fund voting starts Sept. 2. (Byers)

Adjournment

Meeting was adjourned at 6:41 p.m.

The Next Heritage Preservation Commission Meeting: September 13, 2011

Heritage Preservation Commission decisions are final unless appealed.





August 4, 2011

Ms. Beth Elliott  
City of Minneapolis  
250 4th St S, Room 110  
Minneapolis, MN 55415

**RE: Warehouse District Heritage Street Plan**

Dear Beth:

The North Loop Neighborhood Association (NLNA) supports the final concepts and recommendations for the Warehouse District Heritage Street Plan as presented. We appreciate all the outreach you and John Slack have done over the past months on this project, including your most recent presentation at the Planning & Zoning (P&Z) committee meeting on July 20th.

The Warehouse District Heritage Street Plan is intended to provide a blueprint for the enhancement of the public right-of-way within the Historic Warehouse District and North Loop Neighborhood. The recommendations outlined in the study will look to preserve the character of the area by restoring and rehabilitating the historic paved streets and loading docks, improve district accessibility for all modes of transit, allow for appropriate utility and infrastructure upgrades, enhance urban stormwater management and improve the overall livability of the North Loop Neighborhood.

Beth, please let me know if I can answer any questions, and thanks again for all your work.

Sincerely,

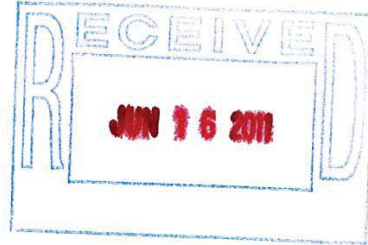
A handwritten signature in black ink, appearing to read 'DR Frank'.

David R. Frank  
North Loop Neighborhood Association



15 June 2011

Beth Elliott  
City of Minneapolis  
250 South 4<sup>th</sup> Street – Room 110 PSC  
Minneapolis MN 55415



RE: Draft Warehouse District Heritage Street Plan

Dear Beth,

Thank you for submitting the Draft Warehouse District Heritage Street Plan, which we received on June 6, 2011. Several staff have reviewed the draft document and provided comments, which are summarized below. In addition, we are enclosing an edited copy of the Draft Plan, which contains mostly minor editorial notes.

Overall, we are very impressed with the quality of the Draft Plan. It is very comprehensive and thorough in its scope, and provides detailed information regarding an implementation strategy to preserve the streets and infrastructure that define the unique qualities of the Minneapolis Warehouse Historic District. We are pleased to see that the draft incorporated comments from members of the Technical Advisory Committee, among others. Specifically, we appreciate the minor changes in the text regarding the introduction and placement of street trees in the District, greater acknowledgement of the importance of retaining historic character-defining features, and the addition of the section referencing the Secretary of the Interior's Standards for the Treatment of Historic Properties, which had been absent in the earlier draft.

We appreciate the opportunity to be directly involved in the development of the Warehouse District Heritage Street Plan, and we look forward to working with the City of Minneapolis in its efforts to preserve the distinctive qualities of the District.

Sincerely,



Michael Koop  
State Historic Preservation Office

enclosure:      edited copy of Draft Plan



MINNESOTA HISTORICAL  
& CULTURAL GRANTS

August 11, 2011

AUG 16 2011

Ms. Beth Elliot  
Principal City Planner  
250 South Fourth Street  
Room 110  
Minneapolis, MN 55415

RE: Minneapolis Warehouse District: Heritage Street Plan  
MHS Grant #3597L-11-HE

Dear Ms. Elliot:

Thank you for submitting the final report for your Minnesota Historical and Cultural Grant.

Staff members reviewed your report and are pleased to note that the project met grant program standards. Your grant is officially closed. The final grant payment will be mailed to you from our Finance Department within 30 days.

If you have any further questions or concerns, feel free to contact me at 651-259-3459 or [melinda.hutchinson@mnhs.org](mailto:melinda.hutchinson@mnhs.org).

Sincerely,

Melinda Hutchinson  
Grants & Field Programs Associate

Minnesota Historical Society, Grants Office, 345 Kellogg Boulevard West, Saint Paul, Minnesota 55102  
651-259-3467 • 888-727-8386 • [www.mnhs.org](http://www.mnhs.org)



