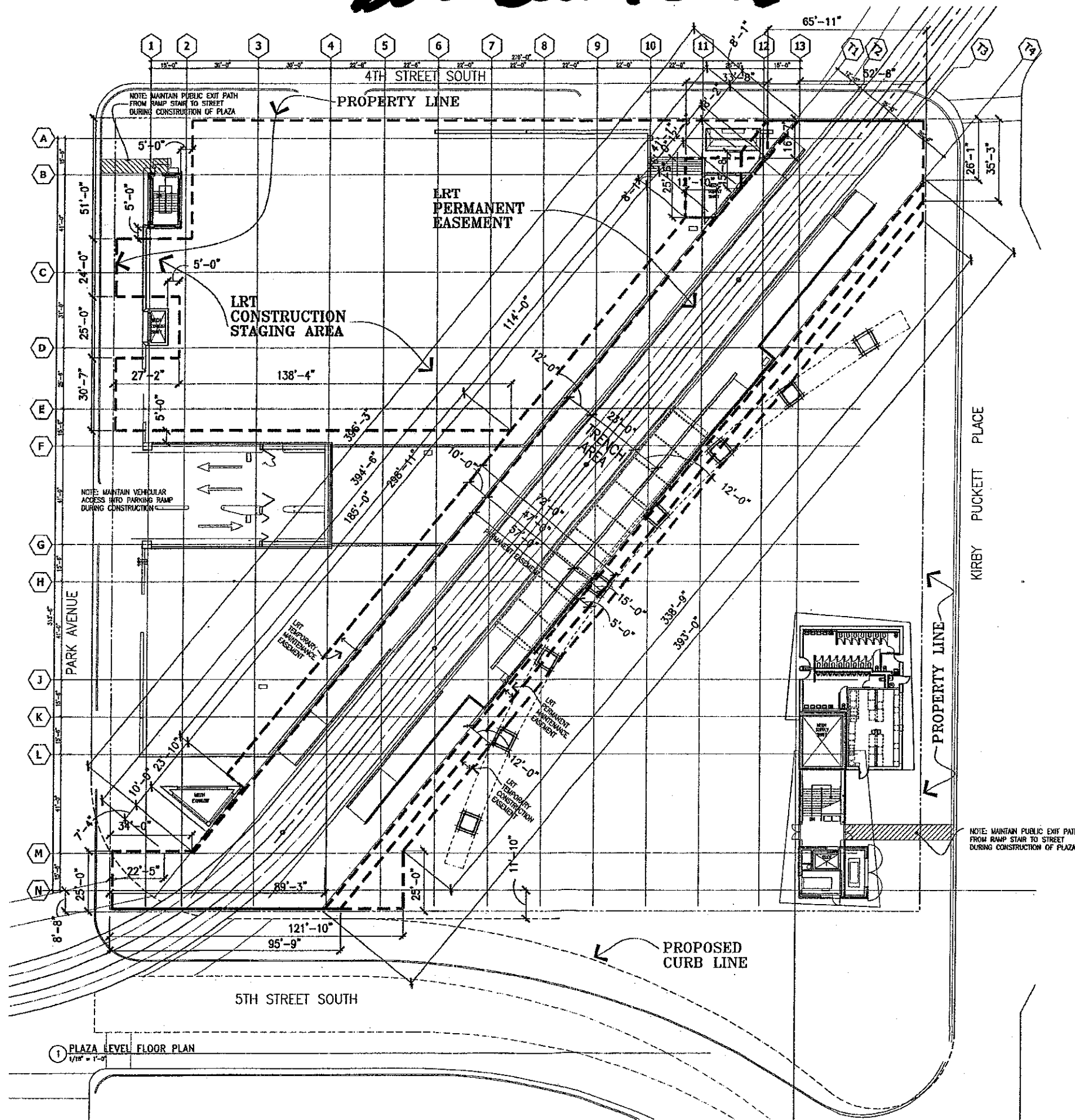


Downtown East



1 PLAZA LEVEL FLOOR PLAN
1/16" = 1'-0"

ALLOWABLE CONSTRUCTION LOADS AT PLAZA

- 250 POUNDS PER SQUARE FOOT, TYPICAL
- 30,000 POUND MAXIMUM AXLE LOAD AT 23' LRT "TRENCH" AREA.

NOTE:

- PROTECT EXISTING WATERPROOFING ON CONCRETE PLAZA SLAB FROM DAMAGE. REPAIR DAMAGED AREAS AS REQUIRED TO MATCH EXISTING AND MAINTAIN WARRANTY.

NOTE:

The MCOA has granted permanent easements to the HPO for the Downtown East LRT Station and tracks, and the MCOA has also granted temporary construction easements to the HPO for the construction of the Downtown East LRT Station and tracks. The schedule of construction of the portion of the arcade including piers 3, 4, 5, and 6 is critical to both projects. The completion of these piers including the masonry veneer is required for the LRT Contractor to install a station canopy structure. The CP-3 Contractor shall cooperate and coordinate with the LRT Contractor. The MCOA will assist in the coordination of these projects.

DOWNTOWN EAST I STATION PLAZA



REVISION HISTORY - T

NO.	DATE	DESCRIPTION

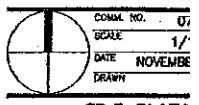
HA
Architecture | Engineering | E
Interior, Green and Sustainable
701 Washington Avenue North - Minneapolis
Telephone: 612.752.4000 Fax: 612.752.4001

I HEREBY CERTIFY THAT THIS PLAN, SPECIFICATION, REPORT AND PREPARATION BY ME OR UNDER MY SUPERVISION AND THAT I AM A DULY LICENSED ARCHITECT UNDER THE LAWS OF THE STATE OF MINNESOTA.

GENERAL SITE INFORMATION

PROJECT NO. 07
SCALE 1/2"
DATE NOVEMBER
YEAR 2007

CP-3 PLAZA



© COPYRIGHT HAMEL, GREEN AND ASSOCIATES