

Ward 5

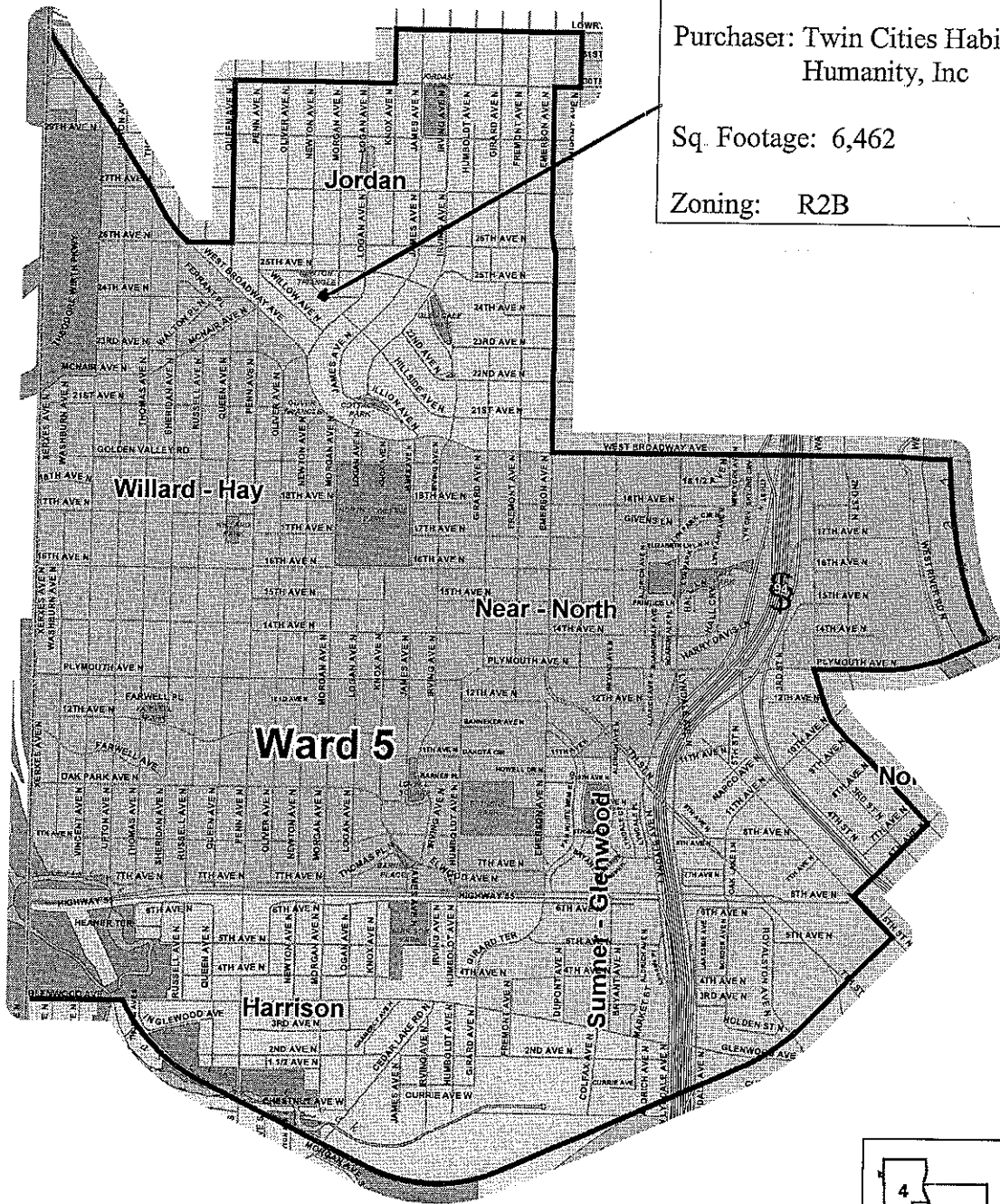
Address: 1912 Hillside Av N

Parcel: TF-301 & 302B




Purchaser: Twin Cities Habitat for
Humanity, Inc

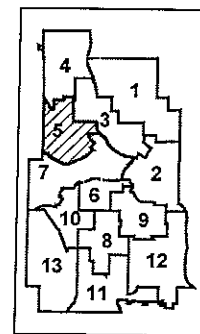
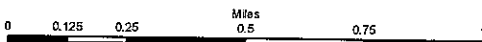
Sq. Footage: 6,462

Zoning: R2B



Legend

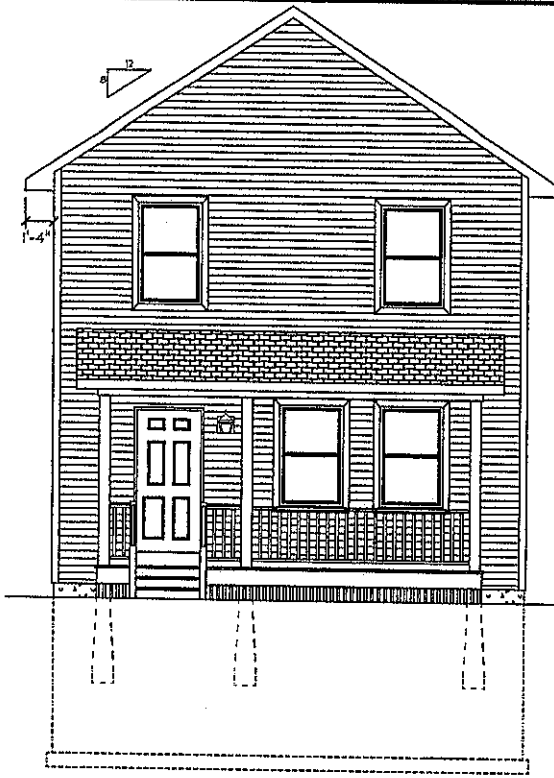
-  City Boundary
-  Ward Boundary
-  Neighborhood Boundaries



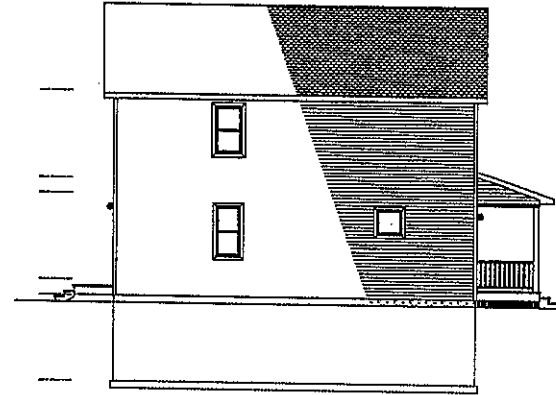
City of Minneapolis Wards and Neighborhoods

Created: January, 2008 F:\GIS\MapServer\Standard_CityWards_06_Neighborhood

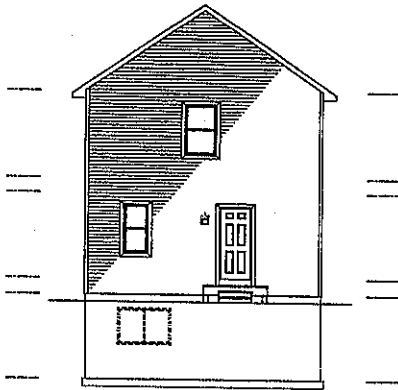




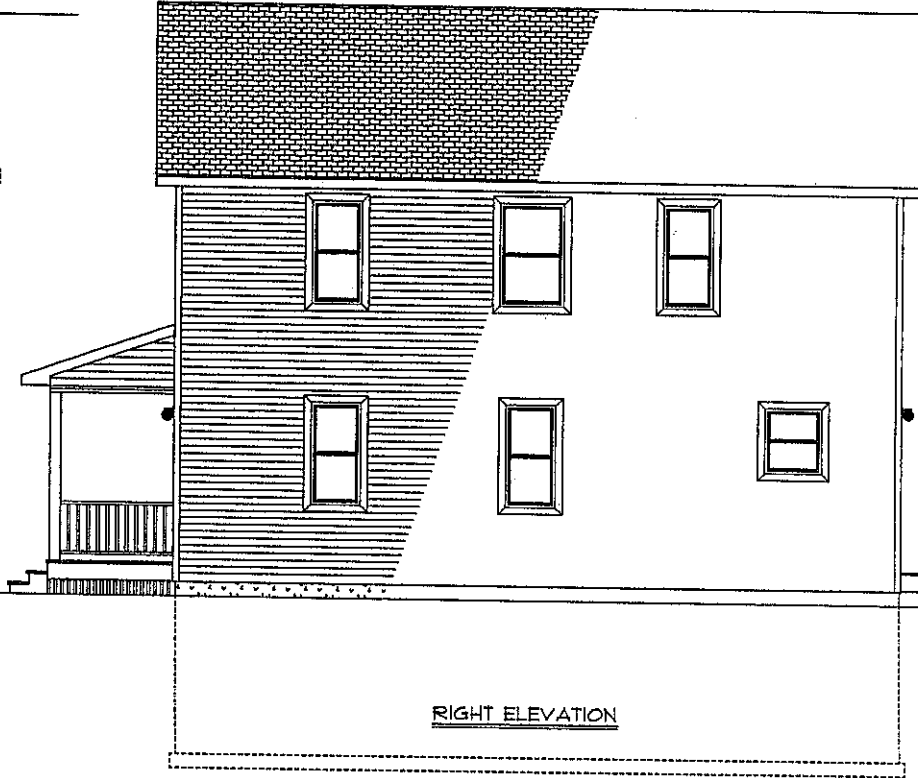
FRONT ELEVATION



LEFT ELEVATION



REAR ELEVATION



RIGHT ELEVATION

SHEET

4 OF 6

REVISIONS:

DRAWN BY: CURSTY CHASE

DATE: 02-05

CHECKED BY: JOHN HALL

MODEL: 4TSS-15
LEFT ENTRANCE

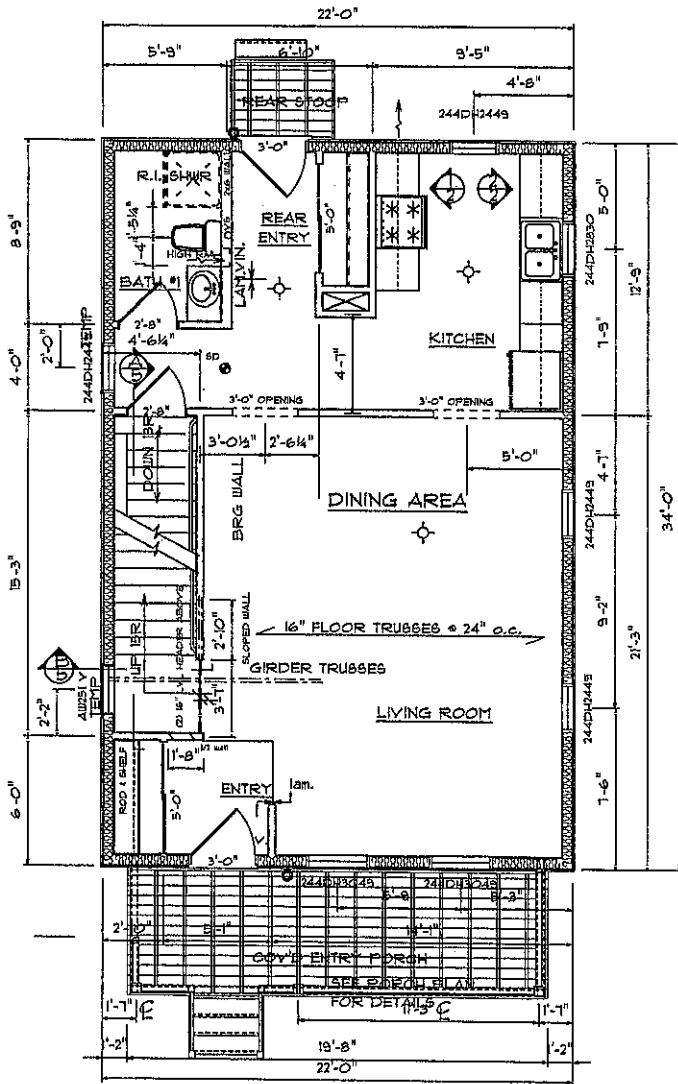
TWIN CITIES HABITAT FOR HUMANITY INC.

3001 4TH ST SE
MINNEAPOLIS, MN 55404-3301

OFFICE 612-331-4090 FAX 612-331-5440

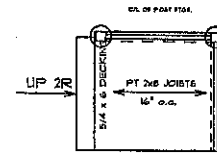


1912 HILLSIDE AV N

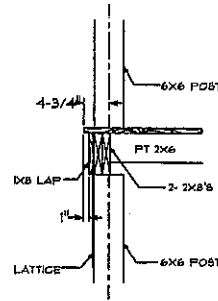


FIRST FLOOR PLAN
1/4" = 1'-0"

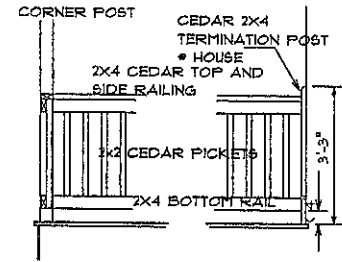
WINDOW AND DOOR SCHEDULE



PORCH DECKING
NO SCALE



RIM DETAIL



PORCH RAILING DETAIL
1/2" = 1'-0"

SHEET
2 OF 6

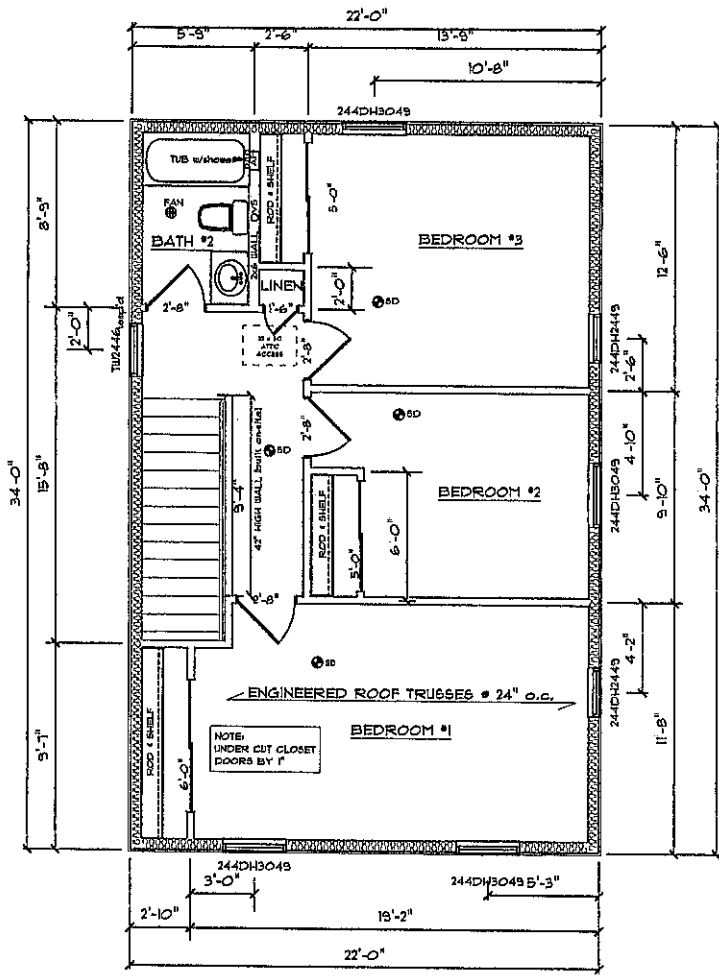
REVISIONS:
DRAWN BY: CRISTY CHASE
DATE: 11-1-05
CHECKED BY: JOHN HALL

MODEL: 4153-15
LEFT ENTRANCE

TWIN CITIES HABITAT FOR HUMANITY, INC.
3001 4TH ST. SE
MINNEAPOLIS, MN 55414-3501
OFFICE 612-331-4290 FAX 612-331-5140



1912 HILLSIDE AV N



SECOND FLOOR PLAN
1/4" = 1'-0"

TWIN CITIES HABITAT FOR HUMANITY INC
3001 4TH ST. SE
MINNEAPOLIS, MN 55414-3301
OFFICE 612-331-4090 FAX 612-331-8140



MODEL: 4193-1.5
LEFT ENTRANCE

DRAWN BY CHRISTY CHASE

DATE 6-7-05

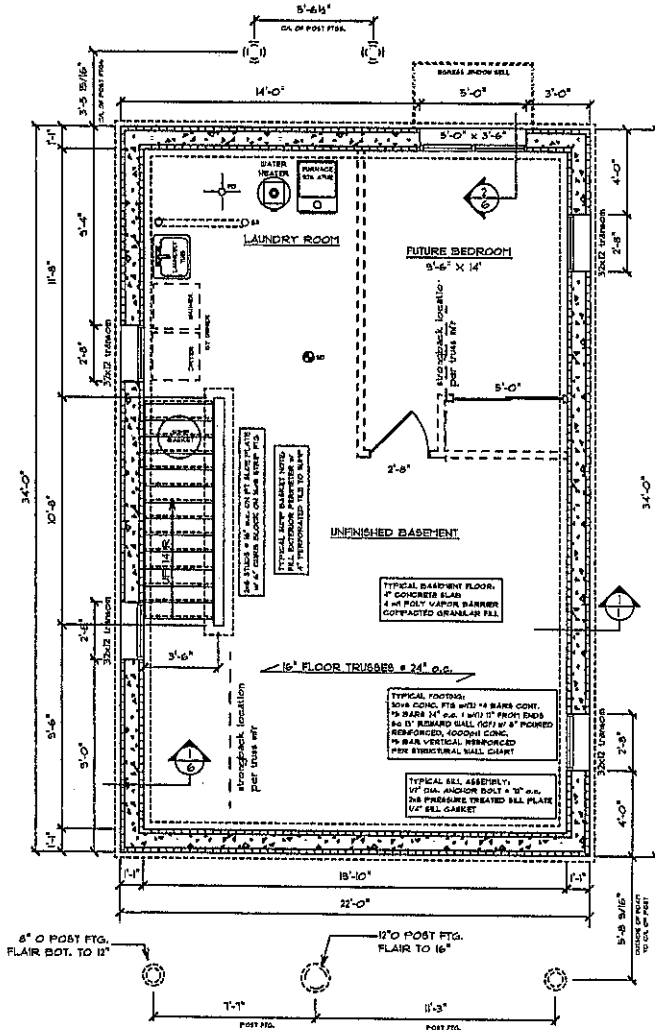
CHECKED BY JOHN HALL

SHEET

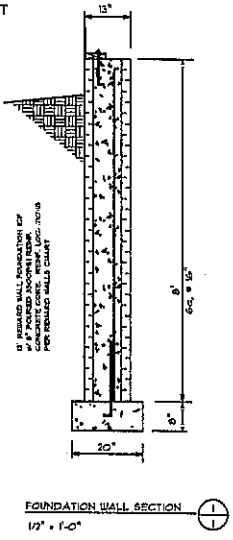
3 OF 6

1912 HILLSIDE AV N

DOOR AND WINDOW SCHEDULE					
PRODUCT CODE	SIZE	COUNT	MEETS EG	TYPE	R.O. SIZE
32X12 UT HOPPER	2'-8" x 1'-0"	4	NO	WINDOW	R.O. 2'-8" x 1'-0"
6042 SLIDER	5'-0" x 3'-6"	1	YES	WINDOW	R.O. 5'-0" x 3'-6"



ADDENDUM TO BUILDING PERMIT
 ADD BASEMENT BEDROOM
 130 CAPITOL HEIGHTS
 6-13-05



SHEET

1 OF 6

REVISIONS

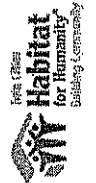
DRAWN BY: CHRISTY CHASE

MODEL: 4TSS-1.5
 LEFT ENTRANCE

TWIN CITIES HABITAT FOR HUMANITY, INC.
 3201 4TH ST. SE
 MINNEAPOLIS, MN 55414-3301

DATE: 3-7-05

CHECKED BY: JOHN HALL
 OFFICE 612-331-4050 FAX: 612-331-1540



SQUARE FOOTAGE:
 BASEMENT 572 SQ. FT.
 1st FLOOR 589 SQ. FT.
 2nd FLOOR 605 SQ. FT.
 TOTAL 1766 SQ. FT.

1912 HILLSIDE AV N