

CODE REVIEW

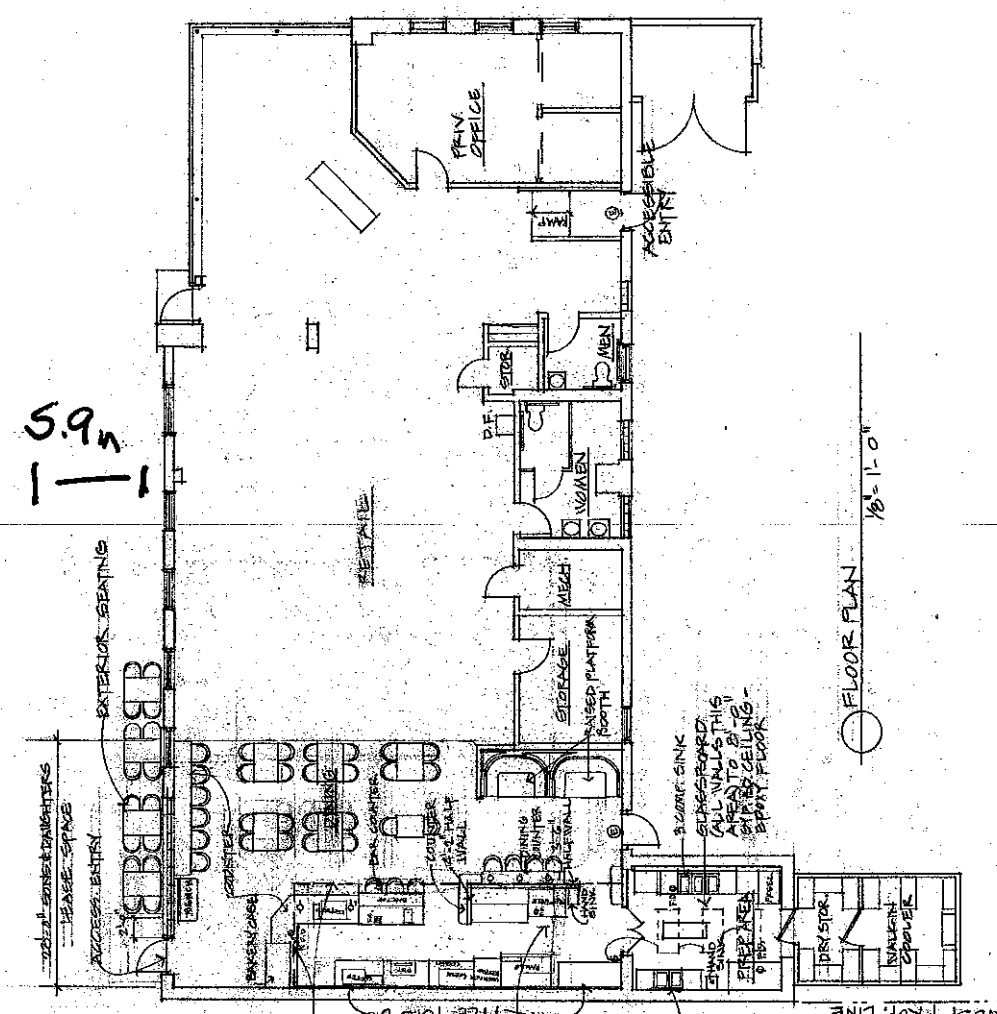
PROPOSED WORK: A portion of an existing masonry building will be developed into a café.
OCCUPANCY GROUP: A-2 (Restaurant) shared with M
OCCUPANCY SEPARATION: No separation required
BUILDING TYPE: V-B; Fire Resistance Rating, 0 for all members. May have unlimited unprotected openings.
TOTAL GROSS AREA: 4,375 square ft. (one story); 6,000 allowable for building type V-B.
OCCUPANT LOAD:
 Restaurant: 545 s.f. @ 15 s.f./occ. = 36.3 occupants; Kitchen: 438 s.f. @ 200 s.f./occ. = 2.2 occupants; Storage: 150 s.f. @ 300 = .5 occupants.
RESTAURANT OCCUPANT LOAD = 39 occupants
 Mercantile: 1800 @ 30 s.f./occ. = 60 occupants; Office: 365 s.f. @ 100 s.f./occ. = 3.7
MERCANTILE OCCUPANT LOAD = 63.7
BUILDING OCCUPANT LOAD = 102.7 occupants

EGRESS REQUIREMENTS:
 Occupancy load 1-900, 2 exits required; 2 provided (4 for building), 1 accessible required; Travel distance (per Table 1016.1): 200 feet max. without sprinkler system (no area of the building is 200' from an exit).

SPRINKLERS:
 Sprinklers not required in A occupancy where fire area is less than 5,000 sq. ft. as per IBC Guide to Sprinklers Section 5.13 (Table 5.13.6).

PLUMBING FIXTURE COUNT:
 Occupant Load, 102.7 = 51.5 male/51.5 female.
 Using amounts for "restaurant": WC, 1/75 males; 1/75 females; 1/200 males; 1/200 females; 1 WC and 1 Lav each Male and Female, required; all ADA accessible, 1 service sink required (one provided).

*Approved
 11/8/12
 J.S.M.S.*



I HEREBY CERTIFY THAT THIS PLAN, SPECIFICATION OR REPORT WAS PREPARED BY ME OR UNDER MY DIRECT SUPERVISION AND THAT I AM A DULY REGISTERED ARCHITECT UNDER THE LAWS OF THE STATE OF MINNESOTA
Kevin Gustaf
 Date: 1.25.12, Reg. No. 17453
 5.12.12 (prev. seal)

AUG 10, 2012
 JULY 23, 2012

SONS AND DAUGHTERS
 4023 East Lake Street
 Minneapolis, MN
 Karen Gledhill, Architect
 Minneapolis, MN 55406
 612-747-7258
ROBERT R. ROSS, C.O.C.
 Design for Preservation
 1402 Dahl River Parkway
 Minneapolis, MN 55425
 612-337-9585